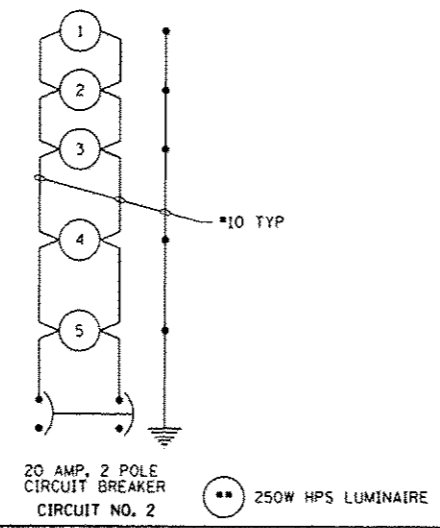
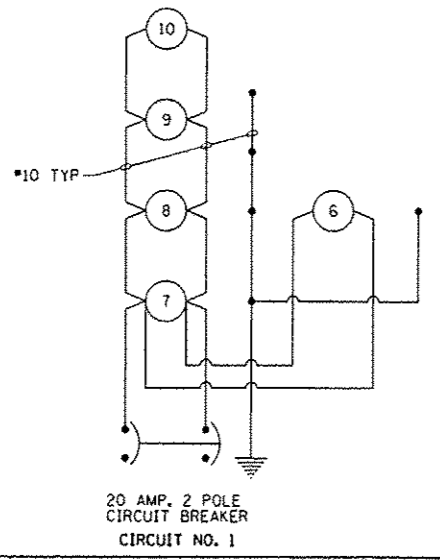
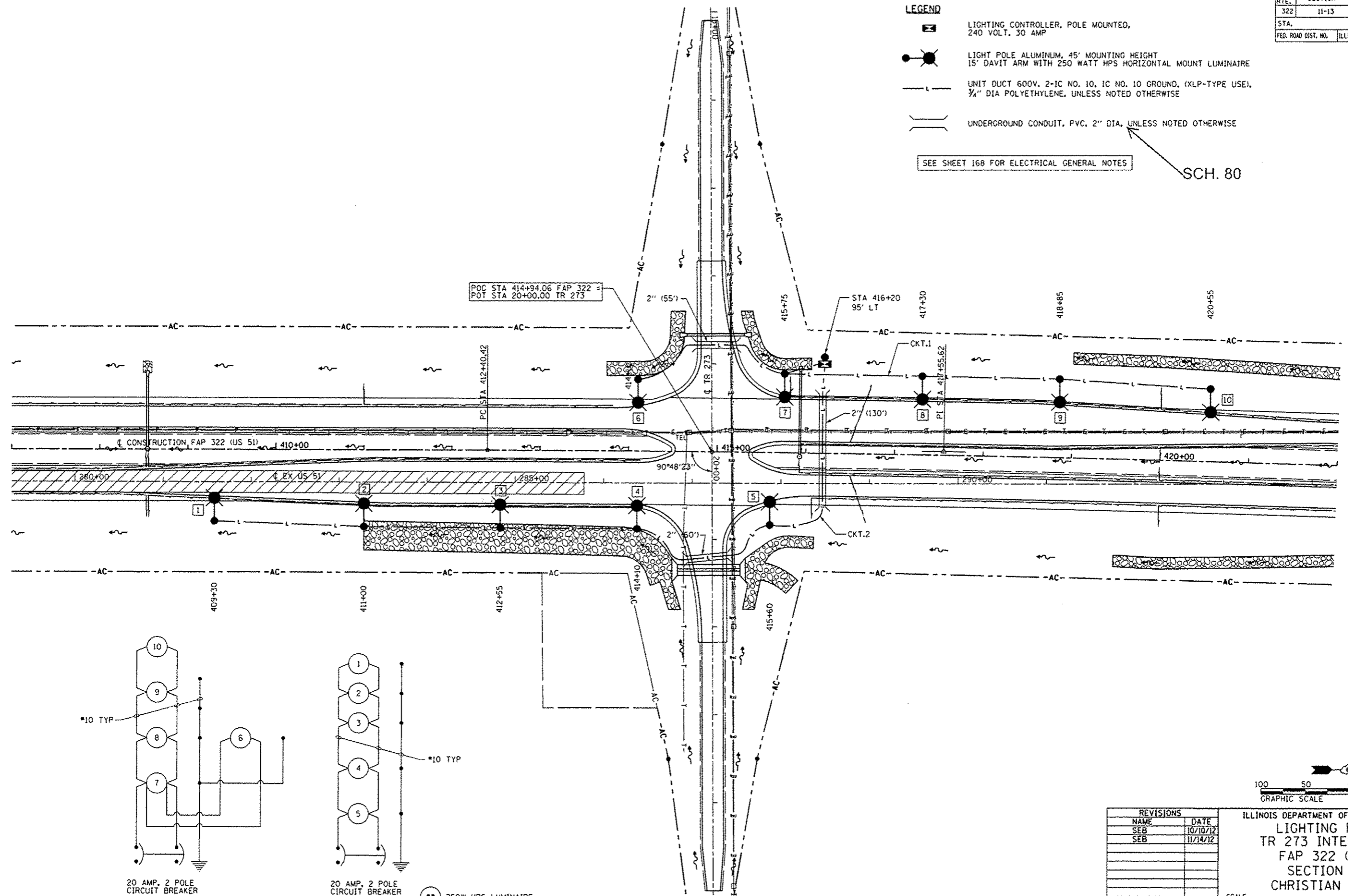


F.A.P. RTE.	SECTION	COUNTY	TOTAL SHEETS	SHEET NO.
322	11-13	CHRISTIAN	437	174
STA.		TO STA.		
FED. ROAD DIST. NO.	ILLINOIS	FED. AID PROJECT		

- LEGEND**
- LIGHTING CONTROLLER, POLE MOUNTED, 240 VOLT, 30 AMP
 - LIGHT POLE ALUMINUM, 45' MOUNTING HEIGHT, 15' DAVIT ARM WITH 250 WATT HPS HORIZONTAL MOUNT LUMINAIRE
 - UNIT DUCT 600V, 2-1C NO. 10, 1C NO. 10 GROUND, (XLP-TYPE USE), 3/4" DIA POLYETHYLENE, UNLESS NOTED OTHERWISE
 - UNDERGROUND CONDUIT, PVC, 2" DIA, UNLESS NOTED OTHERWISE

SEE SHEET 168 FOR ELECTRICAL GENERAL NOTES

SCH. 80



● 250W HPS LUMINAIRE



REVISIONS	
NAME	DATE
SEB	10/10/12
SEB	11/14/12

ILLINOIS DEPARTMENT OF TRANSPORTATION
LIGHTING PLAN -
TR 273 INTERSECTION
FAP 322 (US 51)
SECTION 11-13
CHRISTIAN COUNTY

SCALE: _____ DRAWN BY: EBB
DATE: 8/27/07 CHECKED BY: _____

11/24/2012
 11/24/2012 10:30 AM PLANS MANAGER SHEET 11/24/2012 10:30 AM 11/24/2012 10:30 AM