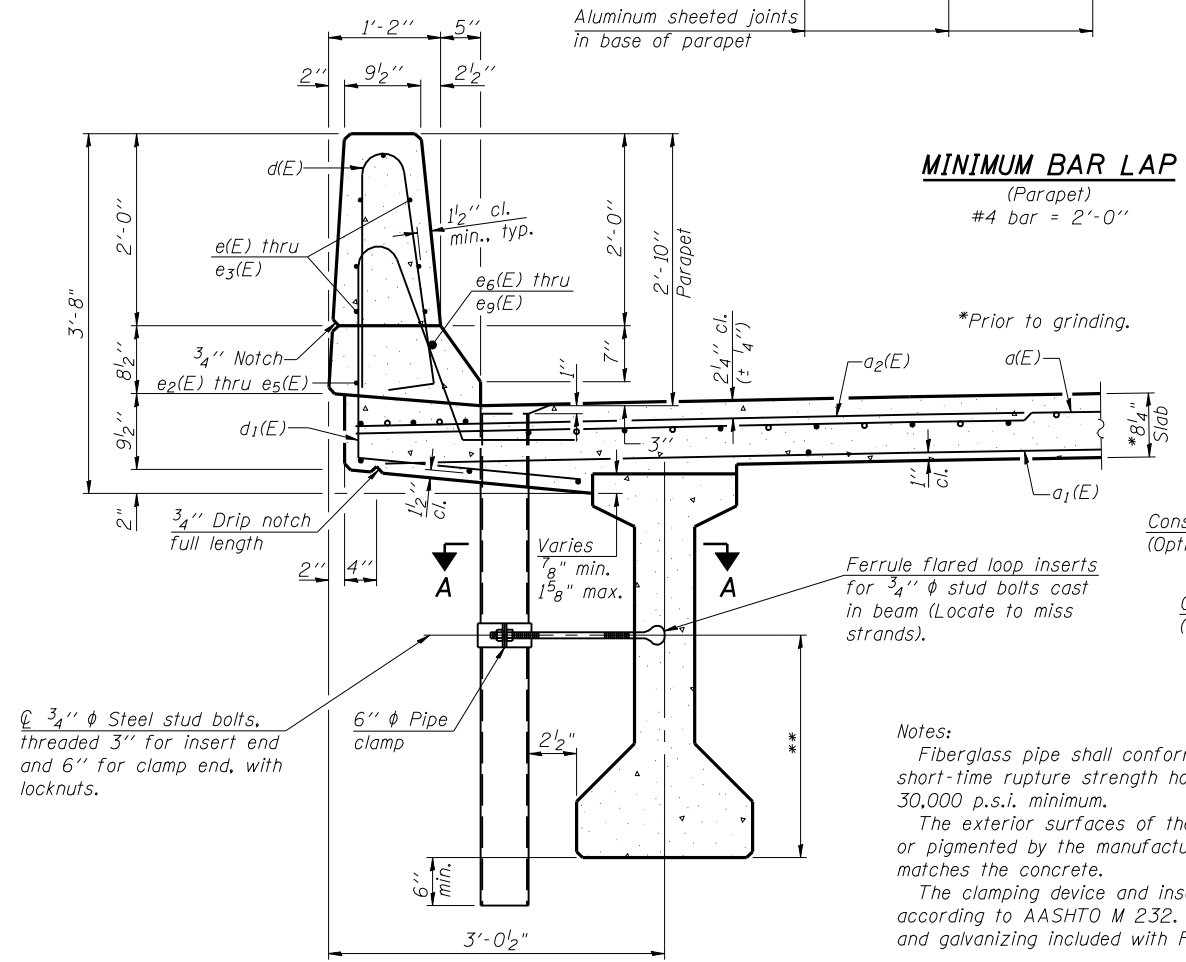
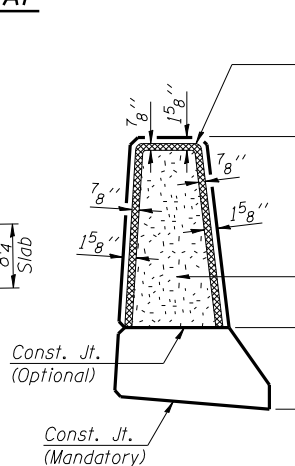


INSIDE ELEVATION OF PARAPET



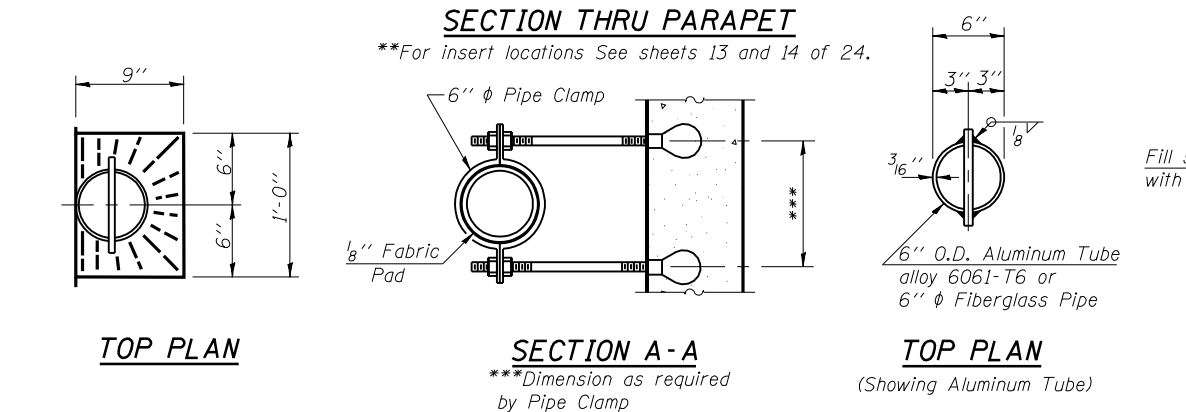
MINIMUM BAR LAP
(Parapet)
#4 bar = 2'-0"



SUPERSTRUCTURE BILL OF MATERIAL

Bar	No.	Size	Length	Shape
a(E)	210	#5	42'-6"	—
a1(E)	173	#5	41'-10"	—
a2(E)	210	#6	6'-6"	—
a3(E)	4	#5	23'-4"	—
b(E)	184	#5	32'-7"	—
b1(E)	86	#6	17'-5"	—
b2(E)	205	#5	26'-7"	—
d(E)	268	#5	5'-7"	⌋
d1(E)	268	#5	7'-9"	⌋
e(E)	56	#4	15'-6"	—
e1(E)	28	#4	18'-8"	—
e2(E)	32	#4	4'-3"	—
e3(E)	32	#4	6'-1"	—
e4(E)	4	#4	31'-3"	—
e5(E)	4	#4	19'-11"	—
e6(E)	2	#8	37'-7"	—
e7(E)	4	#8	31'-3"	—
e8(E)	4	#8	6'-1"	—
e9(E)	4	#8	4'-3"	—
m(E)	10	#6	44'-4"	—
m1(E)	24	#6	10'-2"	—
m2(E)	30	#6	5'-9"	—
m3(E)	4	#6	2'-0"	—
m4(E)	40	#4	6'-9"	—
m5(E)	12	#8	5'-6"	—
s(E)	92	#5	6'-10"	⌋
s1(E)	82	#4	9'-11"	⌋
s2(E)	70	#4	9'-9"	⌋
v(E)	88	#5	3'-9"	⌋
Reinforcement Bars, Epoxy Coated			Lbs.	42510
Concrete Superstructure			Cu. Yds.	212.9

Bars indicated thus 1x2- #4 etc. indicates 1 line of bars with 2 lengths per line.



PARAPET JOINT DETAILS

