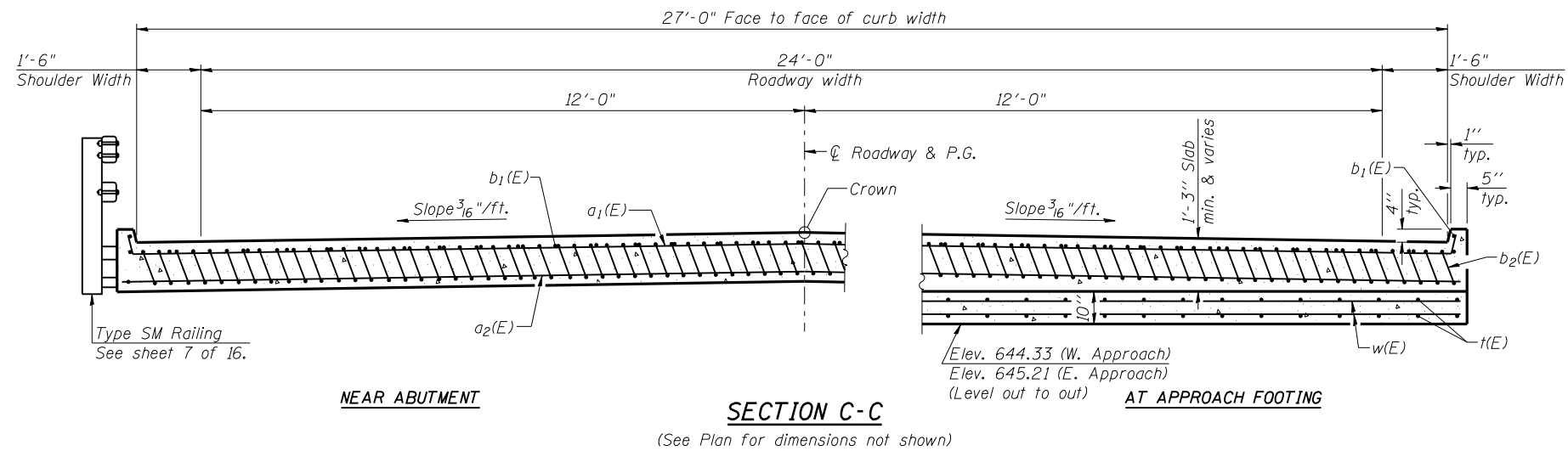
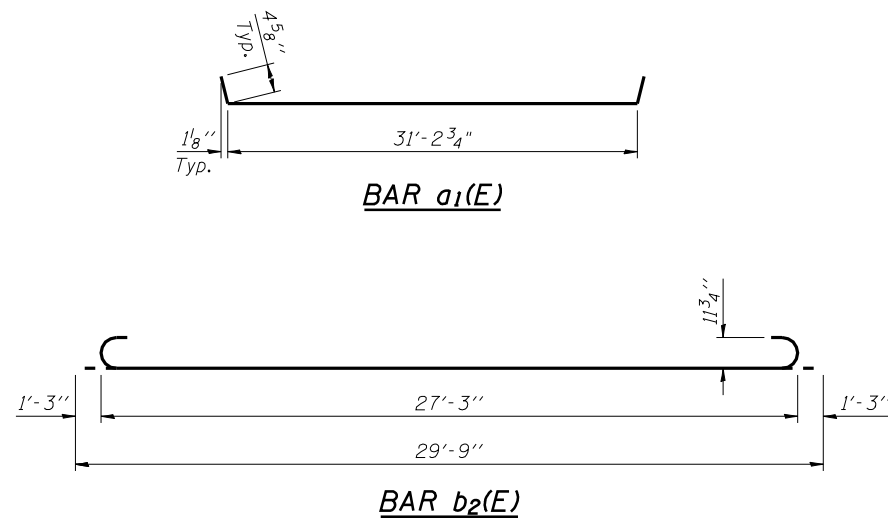


Notes:
 See sheet 8 of 16 for Detail A.
 Approach slab shall be paid for as Concrete Superstructure.
 Approach footing concrete shall be paid for as Concrete Structures.
 Reinforcement shall be paid for as Reinforcement Bars, Epoxy Coated.
 For v₁(E) bar details, see sheet 12 of 16.
 The approach footing maximum applied service bearing pressure (Q_{max}) = 2.0 ksf.
 Cost of excavation for approach footing included with Concrete Structures.
 For Porous Granular Embankment (Special) and drainage treatment details, see sheet 2 of 16.



* Tilt #9 b₂(E) bars as required to maintain clearance.
 *** Cost included with Concrete Superstructure.



**TWO APPROACHES
 BILL OF MATERIAL**

Bar	No.	Size	Length	Shape
a ₁ (E)	50	#4	32'-0"	U
a ₂ (E)	92	#5	32'-0"	—
b ₁ (E)	50	#4	29'-8"	—
b ₂ (E)	134	#9	29'-9"	U
t(E)	116	#4	11'-2"	—
w(E)	80	#5	32'-0"	—
Concrete Superstructure		Cu. Yd.	85.7	
Concrete Structures		Cu. Yd.	20.0	
Reinforcement Bars, Epoxy Coated		Pound	22220	
Bridge Deck Grooving		Sq. Yd.	181	
Protective Coat		Sq. Yd.	191	

(Sheet 2 of 2)