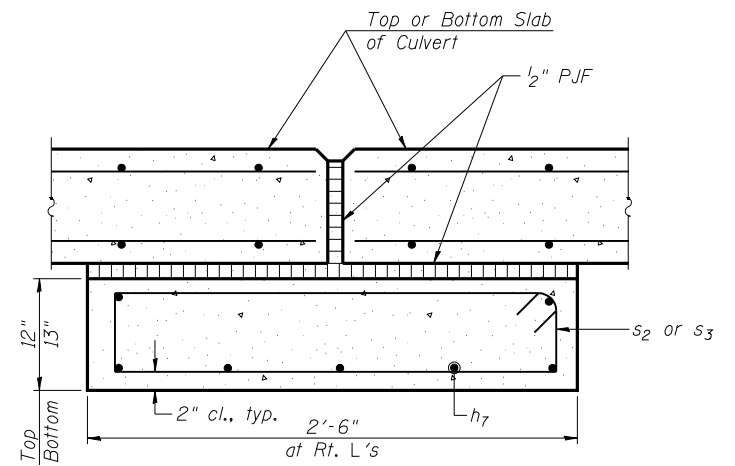
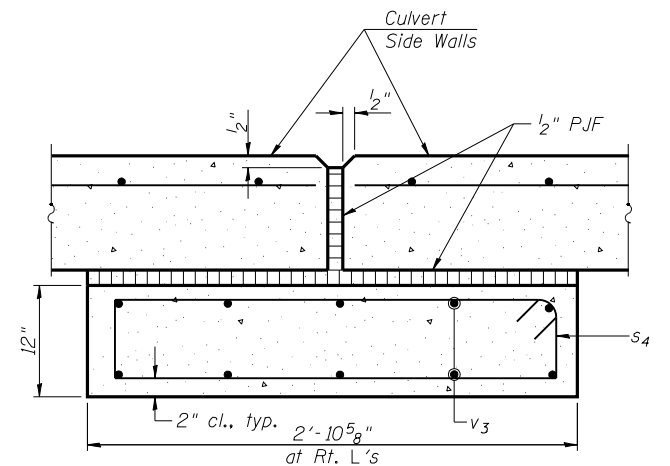


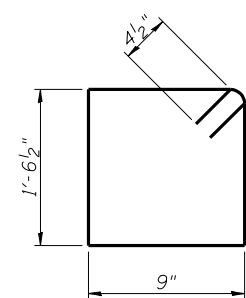
SECTION THRU BOX AT SETTLEMENT COLLAR
(Horizontal Dimensions at right angles to \perp Culvert)



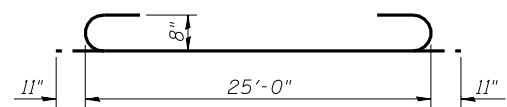
SECTION A-A
(Bottom Shown, Top Similar)



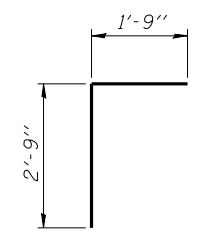
SECTION B-B



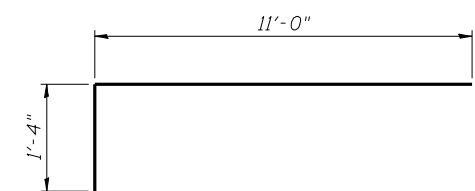
BAR s



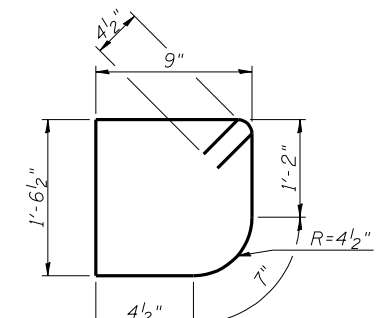
BAR a



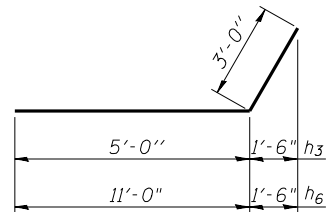
BAR d



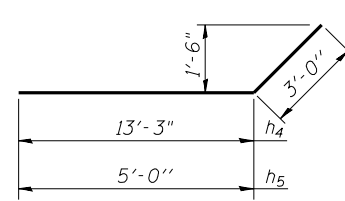
BAR v3



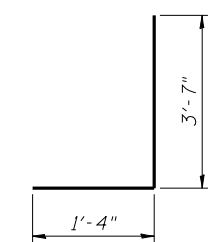
BAR s1



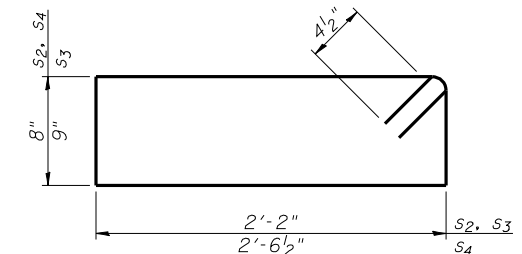
BARS h3 & h6



BARS h4 & h5



BAR v4



BAR s2, s3 & s4

Notes:
Cost of 1/2" P.J.F. and concrete for Settlement Collar is included with Concrete Box Culverts.
Portion of Settlement Collar below bottom slab shall be constructed in Stage IA.

BILL OF MATERIAL

Bar	No.	Size	Length	Shape
a	412	#7	26'-10"	
a1	520	#8	12'-4"	
a2	520	#4	8'-3"	
d	42	#4	4'-6"	
h	366	#5	38'-8"	
h1	366	#5	32'-8"	
h2	18	#6	25'-0"	
h3	28	#8	8'-0"	
h4	22	#8	16'-3"	
h5	32	#8	8'-0"	
h6	22	#8	14'-0"	
h7	14	#8	26'-6"	
v	800	#6	8'-2"	
v1	800	#6	4'-3"	
v2	16	#4	12'-6"	
v3	20	#8	12'-4"	
v4	20	#8	4'-11"	
s	25	#4	5'-4"	
s1	25	#4	5'-2"	
s2	26	#4	6'-5"	
s3	26	#4	6'-7"	
s4	22	#4	7'-2"	
Concrete Box Culverts			Cu. Yd.	523.7
Reinforcement Bars			Pound	91150

(Sheet 2 of 2)



USER NAME =	DESIGNED - MTH	REVISED -
FILE NAME =	CHECKED - TBP	REVISED -
PLOT SCALE =	DRAWN - AJF	REVISED -
PLOT DATE =	CHECKED - MTH	REVISED -

STATE OF ILLINOIS
DEPARTMENT OF TRANSPORTATION

CULVERT DETAILS
STRUCTURE NO. 011-2504

SHEET NO. 6 OF 7 SHEETS

F.A.P. RTE. 322	SECTION 11-13	COUNTY CHRISTIAN	TOTAL SHEETS 437	SHEET NO. 256
CONTRACT NO. 72961			ILLINOIS FED. AID PROJECT	