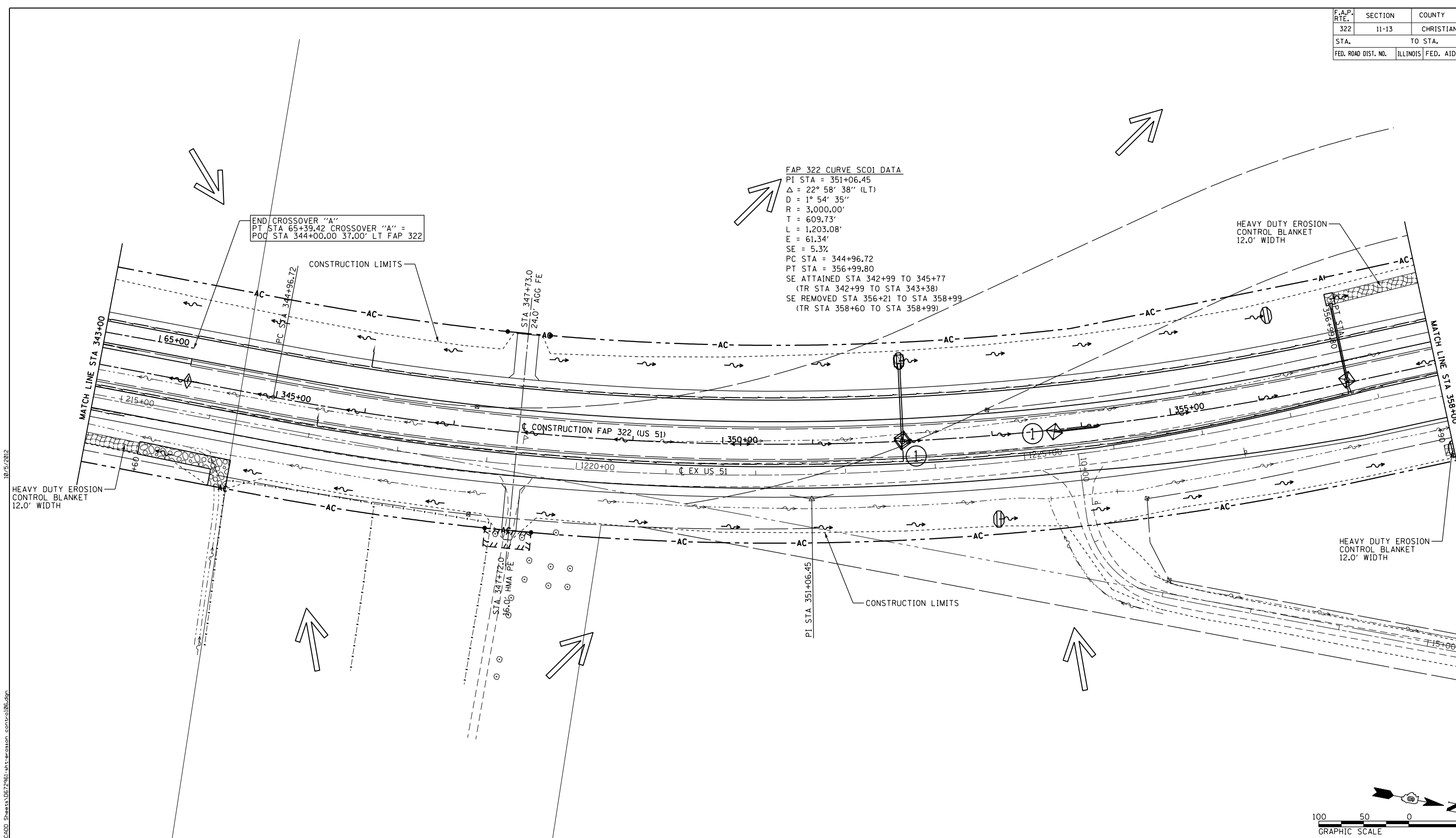


F.A.P. RTE.	SECTION	COUNTY	TOTAL SHEETS	SHEET NO.
322	11-13	CHRISTIAN	437	268
STA.		TO STA.		
FED. ROAD DIST. NO.		ILLINOIS	FED. AID PROJECT	

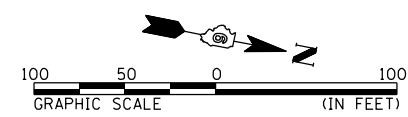
FAP 322 CURVE SC01 DATA
 PI STA = 351+06.45
 $\Delta = 22^\circ 58' 38''$ (LT)
 $D = 1^\circ 54' 35''$
 $R = 3,000.00'$
 $T = 609.73'$
 $L = 1,203.08'$
 $E = 61.34'$
 $SE = 5.3\%$
 PC STA = 344+96.72
 PT STA = 356+99.80
 SE ATTAINED STA 342+99 TO 345+77
 (TR STA 342+99 TO STA 343+38)
 SE REMOVED STA 356+21 TO STA 358+99
 (TR STA 358+60 TO STA 358+99)

END CROSSOVER "A"
 PT STA 65+39.42 CROSSOVER "A" =
 POC STA 344+00.00 37.00' LT FAP 322



10/5/2012

D:\01\res\010321\SSOUTH PLANS NEW\CA00 Sheets\05\2\61-sh1-erosion_control\06.dgn



REVISIONS	
NAME	DATE

ILLINOIS DEPARTMENT OF TRANSPORTATION
 STORM WATER POLLUTION
 PREVENTION PLAN
 FAP 322 (US 51)
 SECTION 11-13
 CHRISTIAN COUNTY
 SCALE: 1"=50'
 DATE: _____ DRAWN BY SEB
 CHECKED BY _____

FAP 322 (US 51) STA 343+00 TO STA 358+00