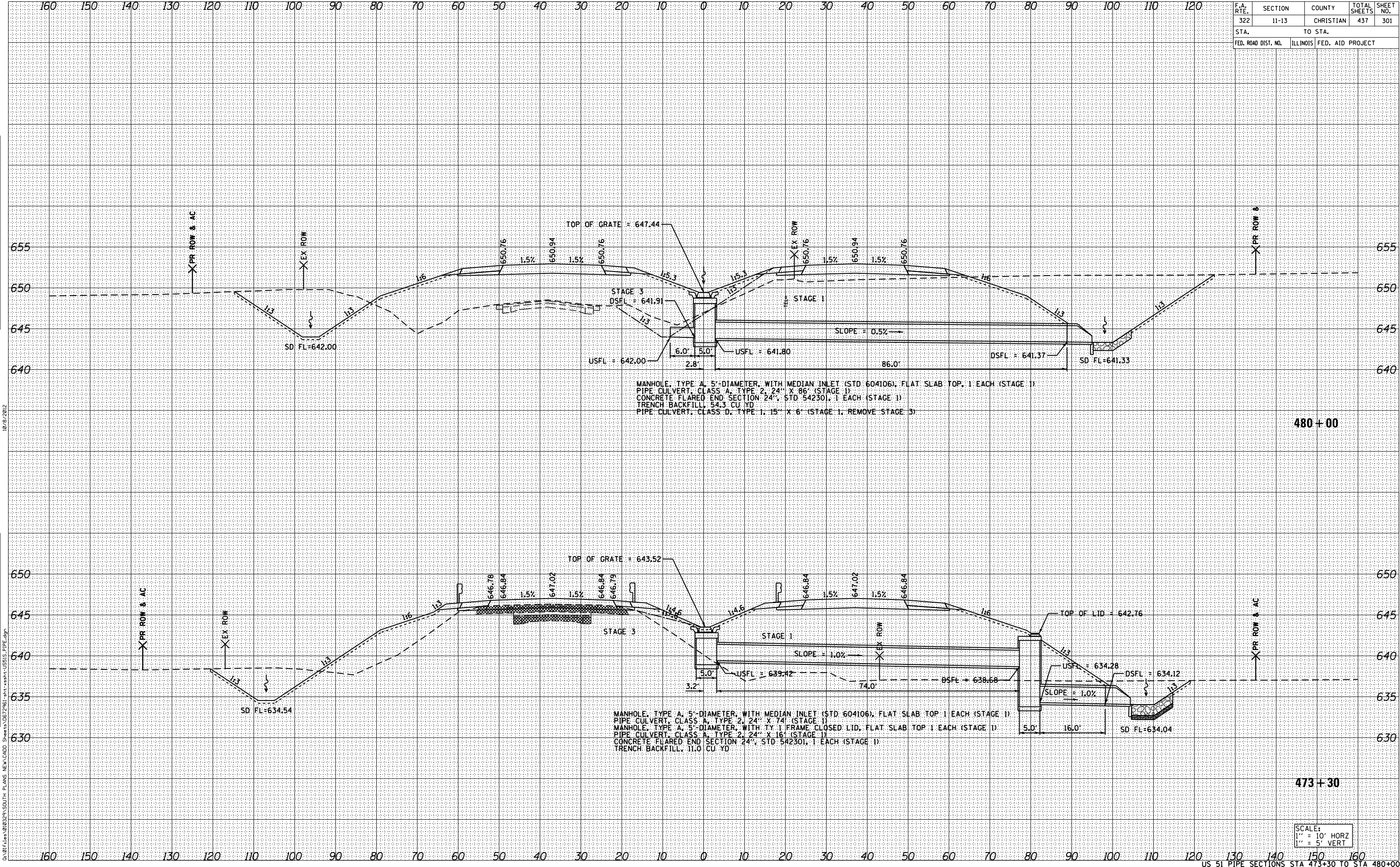


F.A. RTE.	SECTION	COUNTY	TOTAL SHEETS	SHEET NO.
322	11-13	CHRISTIAN	437	301
STA.		TO STA.		
FED. ROAD DIST. NO.	ILLINOIS	FED. AID PROJECT		

DATE	BY
NO.	
AREAS CHECKED	
AREAS	
TEMPLATE	
NOTE BOOK	
SURVEYED	
FINAL SURVEY	

DATE	BY
NO.	
AREAS CHECKED	
AREAS	
TEMPLATE	
NOTE BOOK	
SURVEYED	
ORIGINAL SURVEY	



MANHOLE, TYPE A, 5'-DIAMETER, WITH MEDIAN INLET (STD 604106), FLAT SLAB TOP, 1 EACH (STAGE 1)  
 PIPE CULVERT, CLASS A, TYPE 2, 24" X 86" (STAGE 1)  
 CONCRETE FLARED END SECTION 24", STD 542301, 1 EACH (STAGE 1)  
 TRENCH BACKFILL, 54.3 CU YD  
 PIPE CULVERT, CLASS D, TYPE 1, 15" X 6" (STAGE 1, REMOVE STAGE 3)

MANHOLE, TYPE A, 5'-DIAMETER, WITH MEDIAN INLET (STD 604106), FLAT SLAB TOP, 1 EACH (STAGE 1)  
 PIPE CULVERT, CLASS A, TYPE 2, 24" X 74" (STAGE 1)  
 MANHOLE, TYPE A, 5'-DIAMETER, WITH TY 1 FRAME CLOSED LID, FLAT SLAB TOP, 1 EACH (STAGE 1)  
 PIPE CULVERT, CLASS A, TYPE 2, 24" X 16" (STAGE 1)  
 CONCRETE FLARED END SECTION 24", STD 542301, 1 EACH (STAGE 1)  
 TRENCH BACKFILL, 11.0 CU YD

SCALE:  
 1" = 10' HORZ  
 1" = 5' VERT