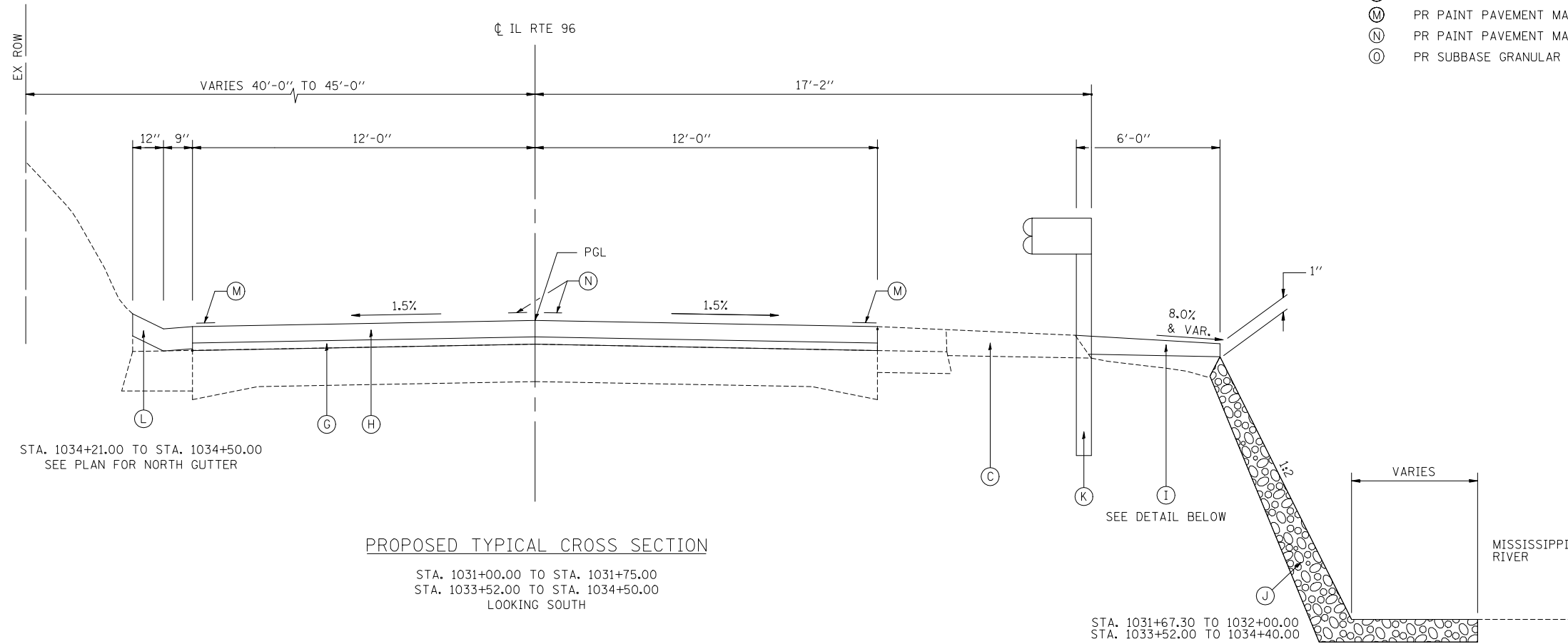


**LEGEND**

- (A) EX PCC PAVEMENT, 9'-6"-9
- (B) EX HMA BASE COURSE WIDENING, 9"
- (C) EX HMA SHOULDER, ±8"
- (D) EX BITUMINOUS SURFACE, ±6"
- (E) PR HMA SHOULDER, 8"
- (F) PR HMA BASE COURSE, 10"
- (G) PR LEVELING BINDER (MACHINE-METHOD), N50, 3/4" & VAR.
- (H) PR HMA SURFACE COURSE, MIX "C", N50, 1 1/2"
- (I) PR AGGREGATE SHOULDERS, TYPE B
- (J) PR STONE DUMPED RIPRAP, CLASS A4, VAR. DEPTH (18" MIN.)
- (K) PR GUARDRAIL (SEE PLAN SHEETS FOR TYPES & LIMITS)
- (L) PR CONCRETE GUTTER, TYPE B
- (M) PR PAINT PAVEMENT MARKING- LINE 5", WHITE
- (N) PR PAINT PAVEMENT MARKING- LINE 5", DOUBLE YELLOW
- (O) PR SUBBASE GRANULAR MATERIAL, TYPE A 12"



**PROPOSED TYPICAL CROSS SECTION**

STA. 1031+00.00 TO STA. 1031+75.00  
 STA. 1033+52.00 TO STA. 1034+50.00  
 LOOKING SOUTH

**SHOULDER DETAIL:**

STA. 1031+50.00 TO STA. 1031+75.00 - 6' AGG. SHOULDER  
 STA. 1031+75.00 TO STA. 1033+52.00 - 4' HMA SHOULDER  
 6' AGG. SHOULDER  
 STA. 1033+52.00 TO STA. 1033+87.50 - 6' AGG. SHOULDER

\* AGGREGATE SHOULDER WILL BE 2 1/4" THICK AT START  
 AND TAPER TO 1" THICK AT ENDING POINT

USER NAME = Plotted by Roadways7	DESIGNED - SGL	REVISED -
	DRAWN - SGL	REVISED -
PLOT SCALE = 40.0000' / IN.	CHECKED - FML	REVISED -
PLOT DATE = 10/19/2012	DATE - 9/2012	REVISED -

<b>IL ROUTE 96 OVER INLET DITCH TYPICAL SECTIONS</b>	
SCALE: NONE	SHEET NO. 02 OF 03 SHEETS
STA.	TO STA.

F.A.P. RTE.	SECTION	COUNTY	TOTAL SHEETS	SHEET NO.
510	120B-3	HANCOCK	38	12
FED. ROAD DIST. NO. 6 ILLINOIS FED. AID PROJECT			CONTRACT NO. 72B67	