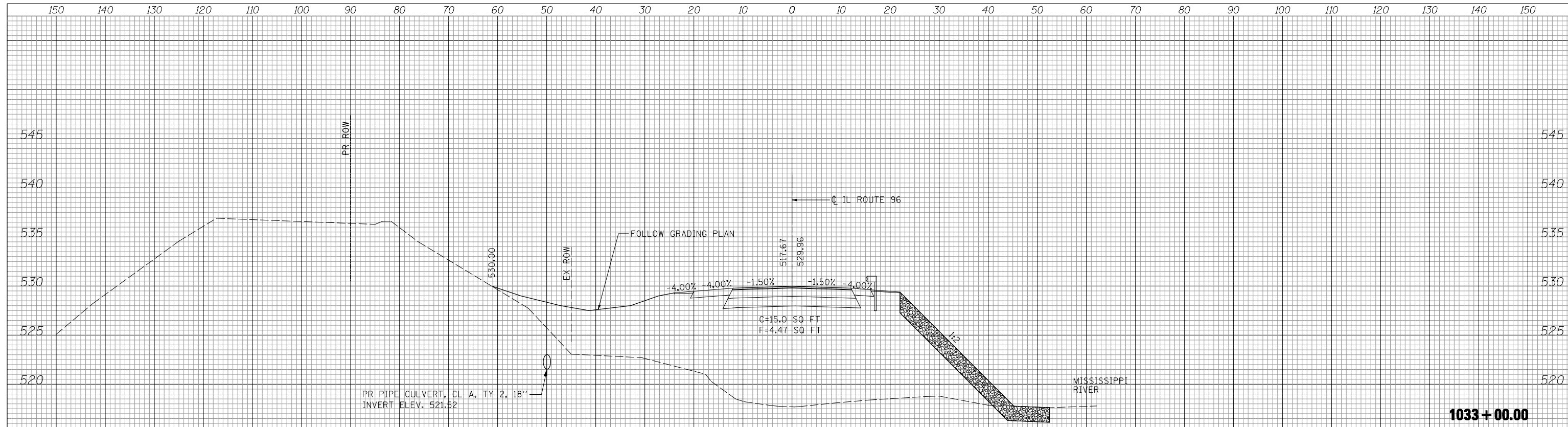
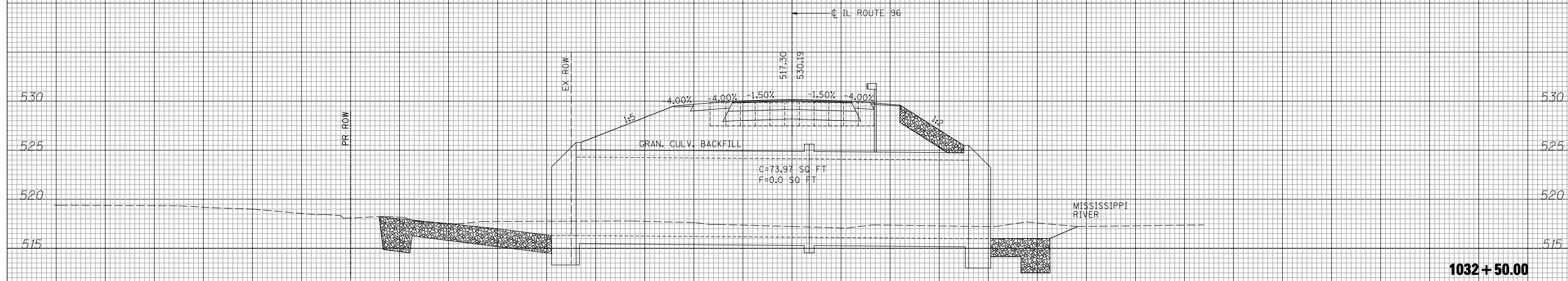


DATE	
BY	
SURVEYED	
PLOTTED	
TEMPLATE	
AREAS	
CHECKED	
FINAL SURVEY	
NOTE BOOK	
NO.	

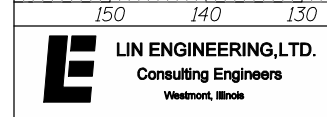
DATE	
BY	
SURVEYED	
PLOTTED	
TEMPLATE	
AREAS	
CHECKED	
ORIGINAL SURVEY	
NOTE BOOK	
NO.	



1033 + 00.00



1032 + 50.00



USER NAME = Plotted by Roadways7	DESIGNED - SGL	REVISED -
	DRAWN - SGL	REVISED -
PLOT SCALE = 20.0000' / IN.	CHECKED - FML	REVISED -
PLOT DATE = 10/19/2012	DATE - 9/2012	REVISED -

**STATE OF ILLINOIS
DEPARTMENT OF TRANSPORTATION**

**IL ROUTE 96 OVER INLET DITCH
CROSS SECTIONS**
SCALE: 1"=10'H, 5'V SHEET 03 OF 05 SHEETS STA. 1032+50.00 TO STA. 1033+00.00

F.A.P. RTE.	SECTION	COUNTY	TOTAL SHEETS	SHEET NO.
510	120B-3	HANCOCK	38	32
FED. ROAD DIST. NO. 6 ILLINOIS FED. AID PROJECT			CONTRACT NO. 72B67	