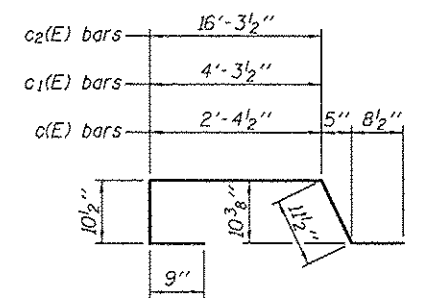


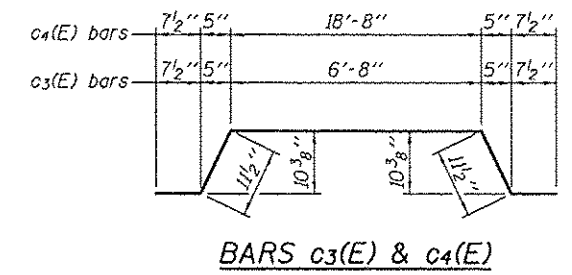
* Existing reinforcement bars extending into the removal area shall be cleaned, straightened and incorporated into the new construction. Any reinforcement bars that are damaged during concrete removal shall be replaced with an approved bar splicer or anchorage system. Cost included with Concrete Removal.

Note:
For Parapet & Median details see sheet 3 of 7.

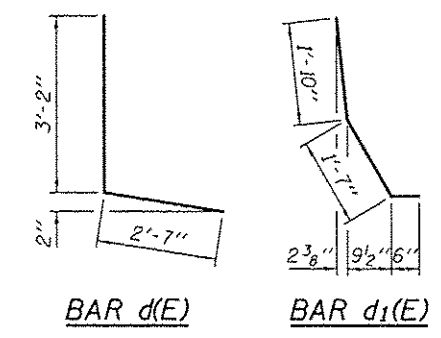
MIN. BAR LAP
#5 Bars = 2'-6"



BARS c(E), c1(E), & c2(E)



BARS c3(E) & c4(E)



BAR d(E)

BAR d1(E)

BILL OF MATERIAL

Bar	No.	Size	Length	Shape
a(E)	32	#5	23'-6"	—
a1(E)	16	#5	32'-7"	—
a2(E)	16	#5	17'-9"	—
a3(E)	12	#6	4'-7"	—
c(E)	6	#5	5'-8"	⌒
c1(E)	3	#5	7'-7"	⌒
c2(E)	3	#5	19'-7"	⌒
c3(E)	2	#5	9'-0"	⌒
c4(E)	2	#5	21'-0"	⌒
d(E)	10	#5	5'-9"	L
d1(E)	10	#5	3'-11"	L
h(E)	16	#6	23'-6"	—
h1(E)	16	#6	26'-8"	—
Concrete Removal				Cu. Yd. 33.8
Concrete Superstructure				Cu. Yd. 34.0
Reinforcement Bars, Epoxy Coated				Pound 3340

Bars indicated thus 2 x 2-#6 etc. indicates 2 lines of bars with 2 lengths per line.

DESIGNED GGE	EXAMINED <i>Timothy A. ...</i>	DATE NOVEMBER 13, 2012
CHECKED ARS	PASSED <i>Kyle M. Steffen</i>	REVISED
DRAWN Kyle M. Steffen	ACTING ENGINEER OF BRIDGES AND STRUCTURES	REVISED
CHECKED GGE ARS	ACTING ENGINEER OF STRUCTURAL SERVICES	REVISED

STATE OF ILLINOIS
DEPARTMENT OF TRANSPORTATION

CONCRETE REPLACEMENT DETAILS
SN 084-0180

F.A. RTE.	SECTION	COUNTY	TOTAL SHEETS	SHEET NO.
67	URS1,2RS1,3RS-61	SANGAMON	116	93
CONTRACT NO. T2F23				ILLINOIS FED. AID PROJECT

SHEET NO. 5 OF 7 SHEETS