

STATE OF ILLINOIS
DEPARTMENT OF TRANSPORTATION
DIVISION OF HIGHWAYS

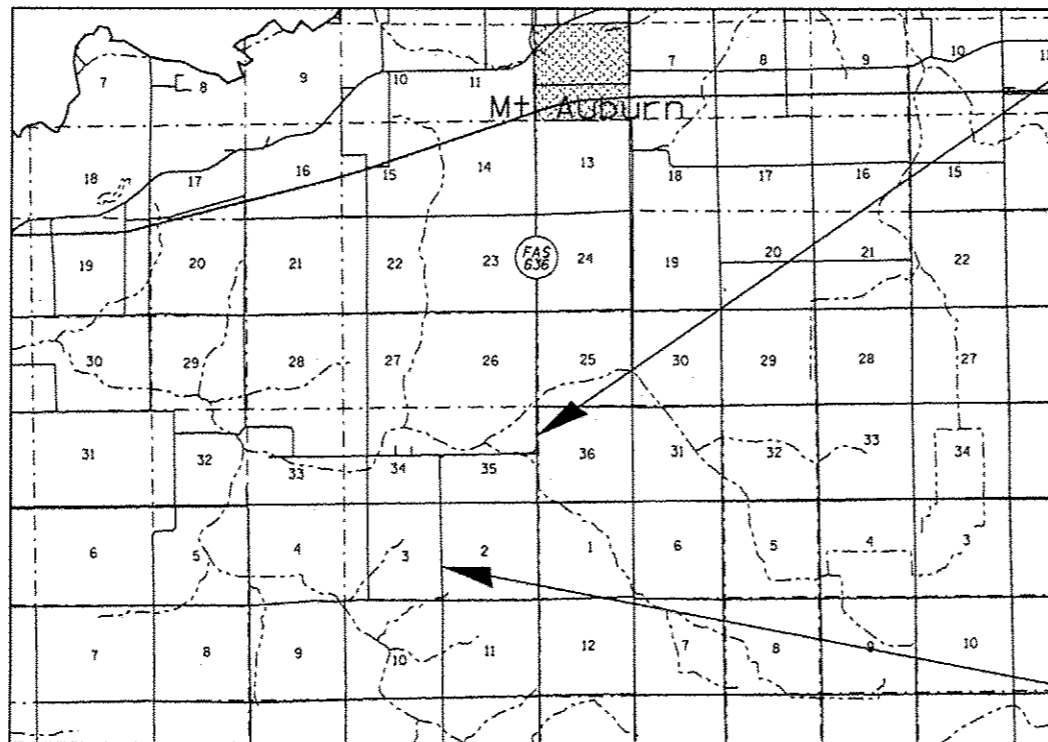
**PROPOSED
CONTRACT MAINTENANCE**

FAS 636 (MT AUBURN RD)
SECTION (4) 1-2

CHRISTIAN COUNTY

C-96-083-12

R 2 W



BEGIN PROJECT
STA. 224 + 51.52

END PROJECT
STA. 332 + 37

STA. EQ. 229 + 87.22bk = 230 + 51.55ah
STA. EQ. 282 + 55.02bk = 283 + 84.32ah
STA. EQ. 312 + 80.17bk = 313 + 11.97ah

GROSS LENGTH = 10,560.00 FT. = 2.000 MILE

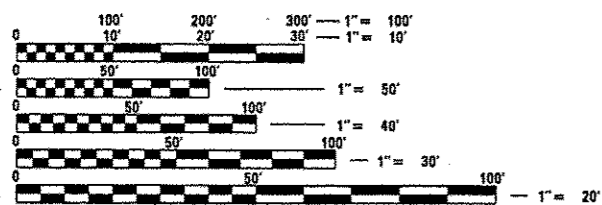
| | | | | |
|---------------------|----------|--------------------|--------------|-----------|
| F.A.S. RTE. | SECTION | COUNTY | TOTAL SHEETS | SHEET NO. |
| 636 | (4) 1-2 | CHRISTIAN | 6 | 1 |
| FED. ROAD DIST. NO. | ILLINOIS | CONTRACT NO. 72F65 | | |

D-96-083-12



FOR INDEX OF SHEETS, SEE SHEET NO. 2

ADT = 1,000(90)



FULL SIZE PLANS HAVE BEEN PREPARED USING STANDARD ENGINEERING SCALES. REDUCED SIZED PLANS WILL NOT CONFORM TO STANDARD SCALES. IN MAKING MEASUREMENTS ON REDUCED PLANS, THE ABOVE SCALES MAY BE USED.

J.U.L.I.E.
JOINT UTILITY LOCATION INFORMATION FOR EXCAVATION
1-800-892-0123
OR 811

PLAN AND CONTRACT TECHNICIAN
TIMOTHY SHARP (217)782-7743

CONTRACT NO. 72F65

STATE OF ILLINOIS
DEPARTMENT OF TRANSPORTATION
DIVISION OF HIGHWAYS

SUBMITTED October 24, 2012
Ray Z. Duda
DEPUTY DIRECTOR OF HIGHWAYS, REGION ENGINEER

Dec 7, 2012
John D. Baranzelli, P.E.
ENGINEER OF DESIGN AND ENVIRONMENT

Dec 7, 2012
William R. Frey, Jr.
DIRECTOR OF HIGHWAYS, CHIEF ENGINEER

PRINTED BY THE AUTHORITY
OF THE STATE OF ILLINOIS

INDEX OF SHEETS

1. COVER
2. INDEX OF SHEETS, GENERAL NOTES, AND HIGHWAY STANDARDS
3. SUMMARY OF QUANTITIES
4. TYPICAL SECTIONS
5. SCHEDULES
6. PLAN

HIGHWAY STANDARDS

- 701001-02
- 701006-04
- 701201-04
- 701301-04
- 701306-03
- 701311-03
- 701901-03
- 780001-03

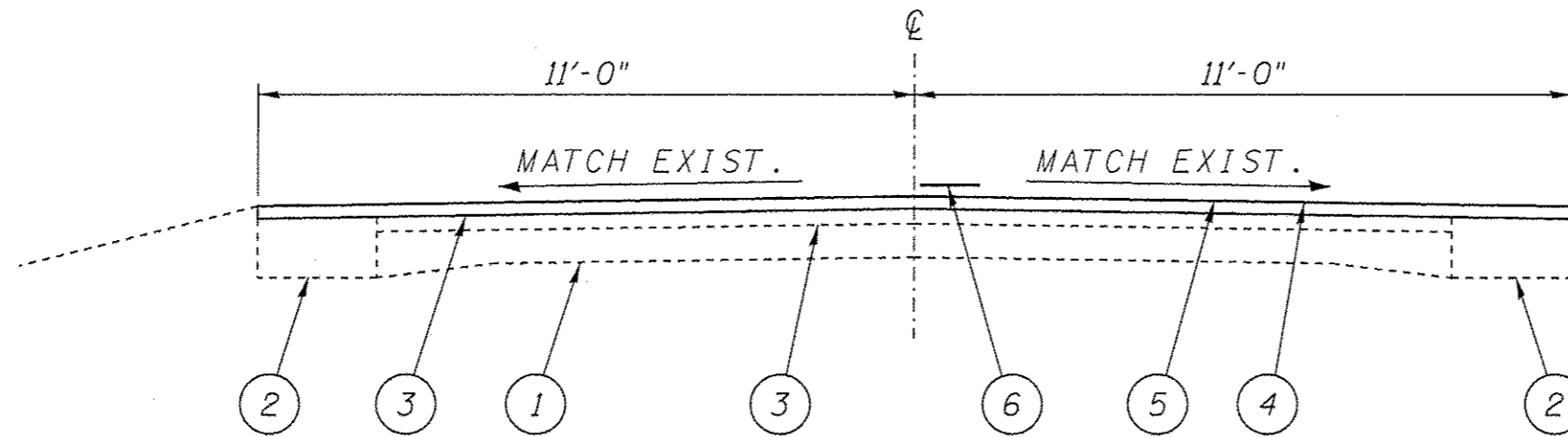
GENERAL NOTES

1. THE CONTRACTOR SHALL GIVE IDOT OPERATIONS TWO WEEKS NOTICE PRIOR TO STARTING WORK IN ORDER FOR IDOT TO COMPLETE PATCHING.
2. ANY REFERENCE TO THE STANDARDS THROUGHOUT THE PLANS SHALL BE INTERPRETED TO BE THE LATEST STANDARDS OF THE DEPARTMENT AS INCLUDED IN THE PLANS.
3. NO EXCAVATION IS ANTICIPATED ON THIS PROJECT. SHOULD ANY EXCAVATION BE REQUIRED, J.U.L.I.E. SHALL BE NOTIFIED A MINIMUM OF 48 HOURS IN ADVANCE (800) 892-0123.
4. ALL CONFLICTING EXISTING STRIPING SHALL BE REMOVED.
5. ALL PAVEMENT MARKINGS, AND NO PASSING ZONES SHALL BE FIELD VERIFIED BY DISTRICT 6 OPERATIONS (785-5312) 14 DAYS PRIOR TO FINAL PAVEMENT MARKINGS.
6. PAVEMENT MARKINGS SHALL NOT BE APPLIED UNTIL FINE AGGREGATE IS PROPERLY SEATED.
7. APPLICATION RATE FOR CIR-FDR EMULSIFIED ASPHALT SHALL BE 1.1 GALLON/SQ YD.
8. SEAL COAT AGGREGATE SHALL BE GRADATION CA-16 OR CA-20.
9. THE AGGREGATES FOR THE MICRO-SURFACING SHALL MEET THE FRICTION REQUIREMENTS FOR MIXTURE C IN ARTICLE 1004.03CA.

| | |
|---|--|
| STATE OF ILLINOIS DEPARTMENT OF TRANSPORTATION DIVISION OF HIGHWAYS DISTRICT 6 | |
| EXAMINED <u>10/18</u> 20 <u>12</u> | <u>Bill Benz</u> ENGINEER OF OPERATIONS |
| EXAMINED <u>Oct 9</u> 20 <u>12</u> | <u>Jimmy Jones</u> ENGINEER OF PROJECT IMPLEMENTATION |
| EXAMINED <u>Oct. 15</u> 20 <u>12</u> | <u>ARMLJ</u> ENGINEER OF PROGRAM DEVELOPMENT |

S U M M A R Y O F Q U A N T I T I E S

| CODE NO. | ITEM | UNIT | 100% STATE |
|------------|---|--------|------------|
| | | | 0005 |
| | | | TOTAL QTY |
| 67100100 | MOBILIZATION | L SUM | 1 |
| 70100450 | TRAFFIC CONTROL AND PROTECTION, STANDARD 701201 | L SUM | 1 |
| 70100460 | TRAFFIC CONTROL AND PROTECTION, STANDARD 701306 | L SUM | 1 |
| 70300100 | SHORT-TERM PAVEMENT MARKING | FOOT | 2,112 |
| 70300230 | TEMPORARY PAVEMENT MARKING - LINE 5" | FOOT | 33,083.2 |
| 70301000 | WORK ZONE PAVEMENT MARKING REMOVAL | SQ FT | 704 |
| * 78001120 | PAINT PAVEMENT MARKING - LINE 5" | FOOT | 33,083.2 |
| 78100100 | RAISED REFLECTIVE PAVEMENT MARKER | EACH | 133 |
| 78300200 | RAISED REFLECTIVE PAVEMENT MARKER REMOVAL | EACH | 133 |
| X7810400 | TEMPORARY RAISED PAVEMENT MARKER | EACH | 528 |
| Z0064265 | CAPE SEAL | SQ YD | 28,395 |
| LR400005 | CIR-FDR EMULSIFIED ASPHALT | GALLON | 31,235 |
| LR400730 | COLD IN PLACE RECYCLING 3" | SQ YD | 28,395 |
| LR403300 | SURFACE PROFILE MILLING | SQ YD | 28,395 |
| | *SPECIALTY ITEM | | |



STA. 224+51.52 TO 332+37.00

L E G E N D

- 1- EXIST. P.C.C. PAVEMENT 9-6¹/₂"-9
- 2- EXIST. PAVEMENT WIDENING
- 3- EXIST. HOT-MIX ASPHALT SURFACE 5"
- 4- PROP. COLD IN PLACE RECYCLING 3"
- 5- PROP. CAPE SEAL
- 6- PAINT PAVEMENT MARKING - LINE 5"

| | | | | | | | | | | | |
|--|------------------------------------|------------|-----------|---|------------------------|--------------------|---------------------|---------------------------|-----------------|--------------|--|
| FILE NAME * | USER NAME * Sherpld | DESIGNED - | REVISED - | STATE OF ILLINOIS DEPARTMENT OF TRANSPORTATION | TYPICAL SECTION | F.A.S. RTE. | SECTION | COUNTY | TOTAL SHEETS | SHEET NO. | |
| S:\CONTRACTMAINT.CAD\72F65\0672F65-shr-typical.dgn | DRAWN - | REVISED - | 636 | | | (4) I-2 | CHRISTIAN | 6 | 4 | | |
| SHT_PLAN | PLOT SCALE * 3.0000' / in. | CHECKED - | REVISED - | | | CONTRACT NO. 72F65 | | ILLINOIS FED. AID PROJECT | | | |
| | PLOT DATE * Oct-16-2012 10:22:29AM | DATE - | REVISED - | | | SCALE: _____ | SHEET 1 OF 1 SHEETS | STA. _____ TO STA. _____ | | | |

| PAVEMENT MARKING SCHEDULE | | | |
|-----------------------------|-----------|-----------------------------------|-------------|
| STATION | TYPE | PAINT PAVEMENT MARKING LINE 5" | |
| | | WHITE | YELLOW |
| LT & RT 224+51 TO 229+87.22 | NO PASS | | 1,072.5 FT |
| LT & RT 230+51.55 TO 233+09 | NO PASS | | 515.9 FT |
| LT 233+09 TO 241+74 | NO PASS | | 865 FT |
| RT 233+09 TO 241+74 | SKIP DASH | | 220 FT |
| LT 241+74 TO 250+40 | SKIP DASH | | 220 FT |
| RT 241+74 TO 250+40 | NO PASS | | 866 FT |
| LT & RT 250+40 TO 258+31 | NO PASS | | 1,582 FT |
| LT 258+31 TO 267+71 | NO PASS | | 940 FT |
| RT 258+31 TO 267+71 | SKIP DASH | | 240 FT |
| LT & RT 267+71 TO 276+42 | NO PASS | | 1,742 FT |
| LT 276+42 TO 282+55.02 | NO PASS | | 613.1 FT |
| RT 276+42 TO 282+55.02 | SKIP DASH | | 160 FT |
| LT 283+84.32 TO 285+67 | NO PASS | | 182.7 FT |
| RT 283+84.32 TO 285+67 | SKIP DASH | | 60 FT |
| 285+67 TO 312+80.12 | SKIP DASH | | 680 FT |
| 313+11.97 TO 317+13 | SKIP DASH | | 100 FT |
| LT 317+13 TO 332+37 | SKIP DASH | | 380 FT |
| RT 317+13 TO 332+37 | NO PASS | | 1,524 FT |
| LT & RT 224+51 TO 332+37 | DGE LINE | 21,120 FT | |
| TOTALS | | 21,120 FT | 11,963.2 FT |

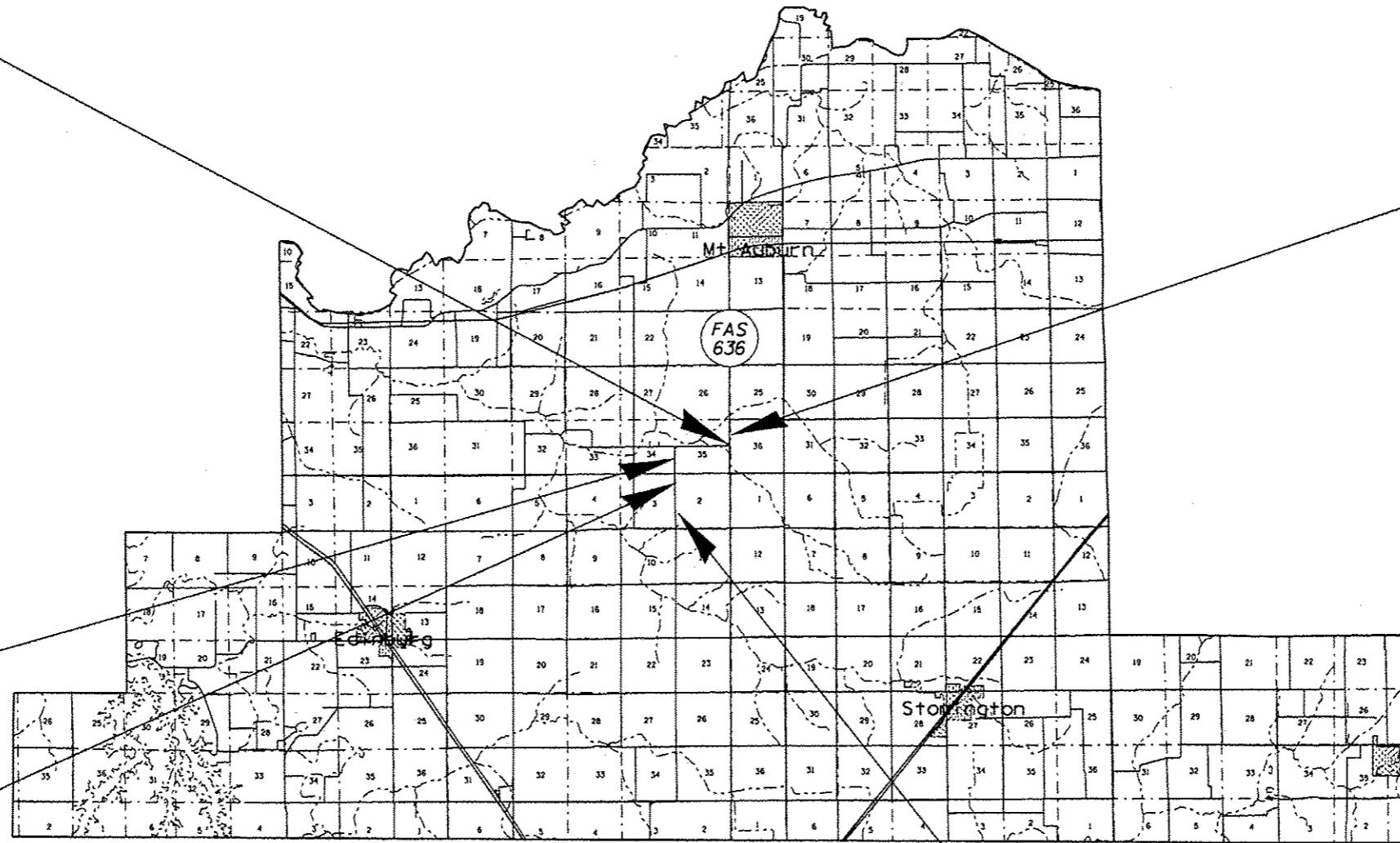
STA. EQ. 229+87.22bk=230+51.55ah
 STA. EQ. 282+55.02bk=283+84.32ah
 STA. EQ. 312+80.12bk=313+11.97ah

1. STATIONS ARE APPROXIMATE.

STA. EQ. 229+87.22bk
= 230+51.55ah



BEGIN PROJECT
STA. 224+51.52



STA. EQ. 282+55.02bk
= 283+84.32ah

STA. EQ. 312+80.12bk
= 313+11.97ah

END PROJECT
STA. 332+37

| | | | | | | | | | | | |
|--|---------------------------------------|------------|-----------|---|--------------------------------|---------------------|-----------------------|--------------------|---------------------|----------------------|---------------------------|
| FILE NAME * S:\CONTRMINT_CAD\72F65\0672F65-shr-pl.dgn | USER NAME * Shor-std | DESIGNED - | REVISED - | STATE OF ILLINOIS DEPARTMENT OF TRANSPORTATION | PLAN MT AUBURN ROAD | | F.A.S. RTE. 636 | SECTION (4) I-2 | COUNTY CHRISTIAN | TOTAL SHEETS 6 | SHEET NO. 6 |
| Default | PLOT SCALE * 110.000000' / 1" = | DRAWN - | REVISED - | | SCALE: | SHEET 1 OF 1 SHEETS | STA. 226+77 | TO STA. 332+37 | CONTRACT NO. 72F65 | | ILLINOIS FED. AID PROJECT |
| | PLOT DATE * Sep-21-2012 09:34:57AM | CHECKED - | REVISED - | | | | | | | | |
| | | DATE - | REVISED - | | | | | | | | |