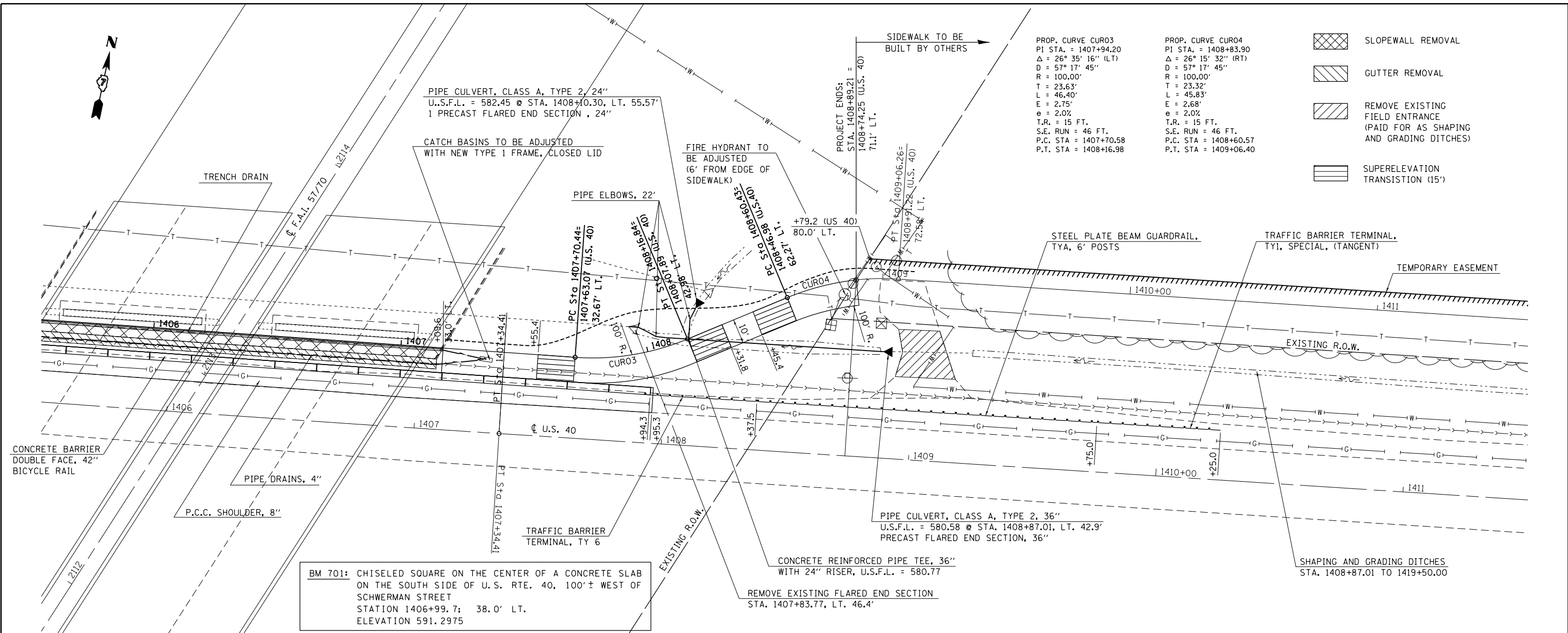


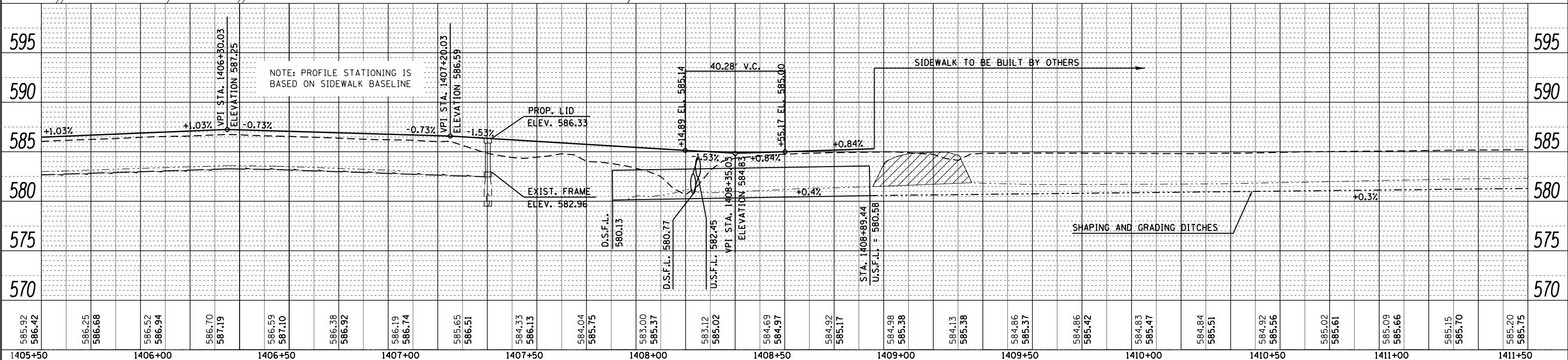


PLAN	SURVEYED	DATE
	PLOTTED	BY
	GRADES CHECKED	
	STRUCTURE NOTATIONS CHECKED	
	NOTE BOOK NO.	
	CADD FILE NAME	

PROFILE	SURVEYED	DATE
	PLOTTED	BY
	GRADES CHECKED	
	STRUCTURE NOTATIONS CHECKED	
	NOTE BOOK NO.	
	CADD FILE NAME	



BM 701: CHISELED SQUARE ON THE CENTER OF A CONCRETE SLAB ON THE SOUTH SIDE OF U.S. RTE. 40, 100' ± WEST OF SCHERMAN STREET STATION 1406+99.7; 38.0' LT. ELEVATION 591.2975



FILE NAME =	USER NAME =	DESIGNED -	REVISED -	STATE OF ILLINOIS DEPARTMENT OF TRANSPORTATION	SIDEWALK PLAN	F.A.S. RTE.	SECTION	COUNTY	TOTAL SHEETS	SHEET NO.
c:\pwork\pwork\stefennk\dms50671\0774316-sht-plnprof.dgn	316-sht-plnprof.dgn	DRAWN -	REVISED -			2796	(L,K)I-2	EFFINGHAM	22	10
PLOT SCALE = 40.0000' / in.	CHECKED -	REVISED -	CONTRACT NO. 74316							
PLOT DATE = 10/2/2012	DATE -	REVISED -	ILLINOIS FED. AID PROJECT							