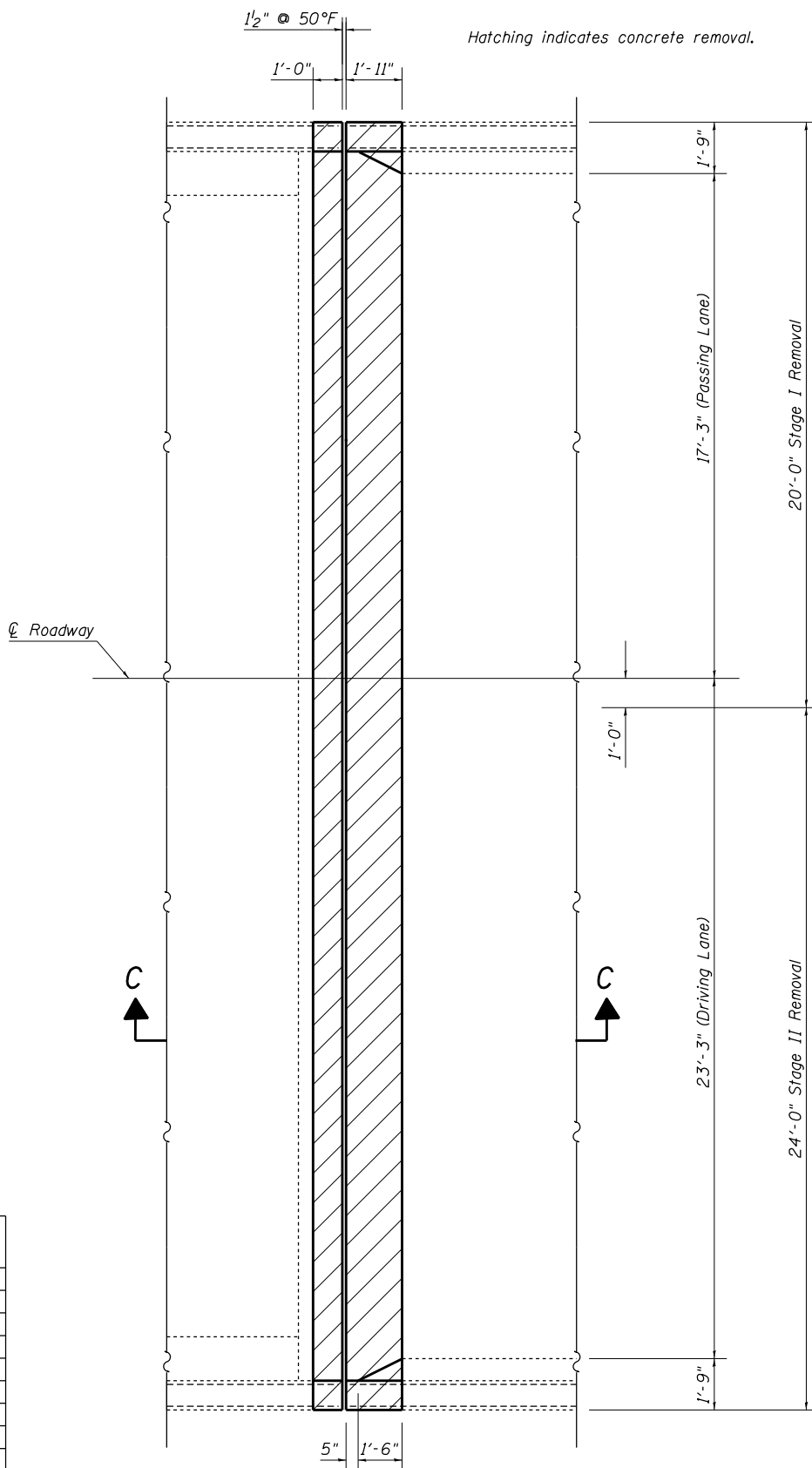


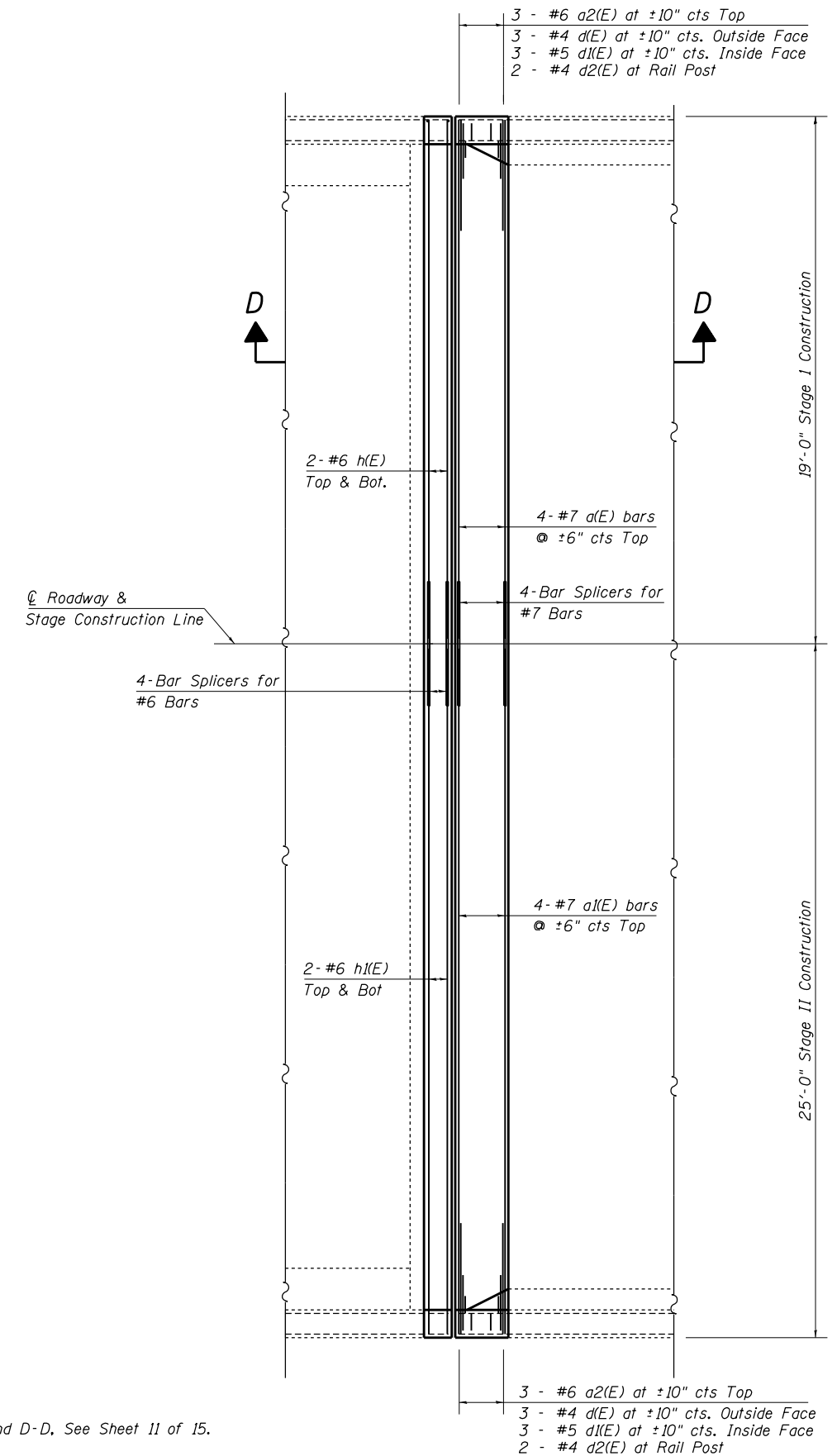
BILL OF MATERIAL

PER ABUTMENT

BAR	NUMBER OF BARS		TOTAL	SIZE	LENGTH	SHAPE
	STAGE I	STAGE II				
a (E)	4		4	#7	18'-6"	—
a1(E)		4	4	#7	24'-6"	—
a2(E)	3	3	6	#6	4'-0"	—
d (E)	3	3	6	#4	4'-7"	L
d1(E)	3	3	6	#5	3'-2"	J
d2(E)	2	2	4	#4	2'-1"	□
h (E)	4		4	#6	18'-6"	—
h1(E)		4	4	#6	24'-6"	—
REINFORCEMENT BARS (EPOXY COATED)					POUND	690
CONCRETE REMOVAL					CU YD	5.1
CONCRETE SUPERSTRUCTURE					CU YD	5.1



EXISTING PARTIAL PLAN
(South Bridge, West Abutment Shown; All Others Similar)



PROPOSED PARTIAL PLAN
(South Bridge, West Abutment Shown; All Others Similar)

For Section C-C and D-D, See Sheet 11 of 15.

FILE NAME =	USER NAME = teasleyck	DESIGNED - DFZ	REVISED -
c:\pwwork\pwwork\teasleyck\d0307638\074591-sh1-brdeta1s-05800770078.dgn		DRAWN - DFZ	REVISED -
Default	PLOT SCALE = 40.0000' / in.	CHECKED - KLB	REVISED -
	PLOT DATE = 10/29/2012	DATE - 7/23/12	REVISED -

STATE OF ILLINOIS
DEPARTMENT OF TRANSPORTATION

EXPANSION JOINT REPLACEMENT DETAIL
SN. 058-0077 (EB) & 058-0078 (WB)

SCALE: SHEET 10 OF 15 SHEETS STA. TO STA.

F.A. RTE.	SECTION	COUNTY	TOTAL SHEETS	SHEET NO.
	• 07 BRIDGE REPAIRS 2013-3	MACON	28	23
	• FAI 72, FAU 7354	CONTRACT NO.	74591	
ILLINOIS FED. AID PROJECT				