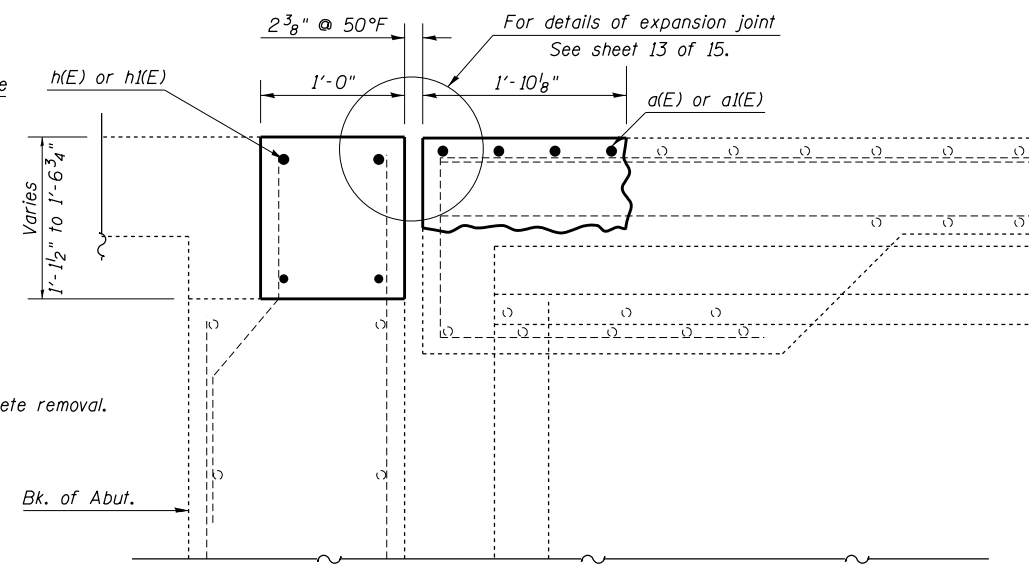


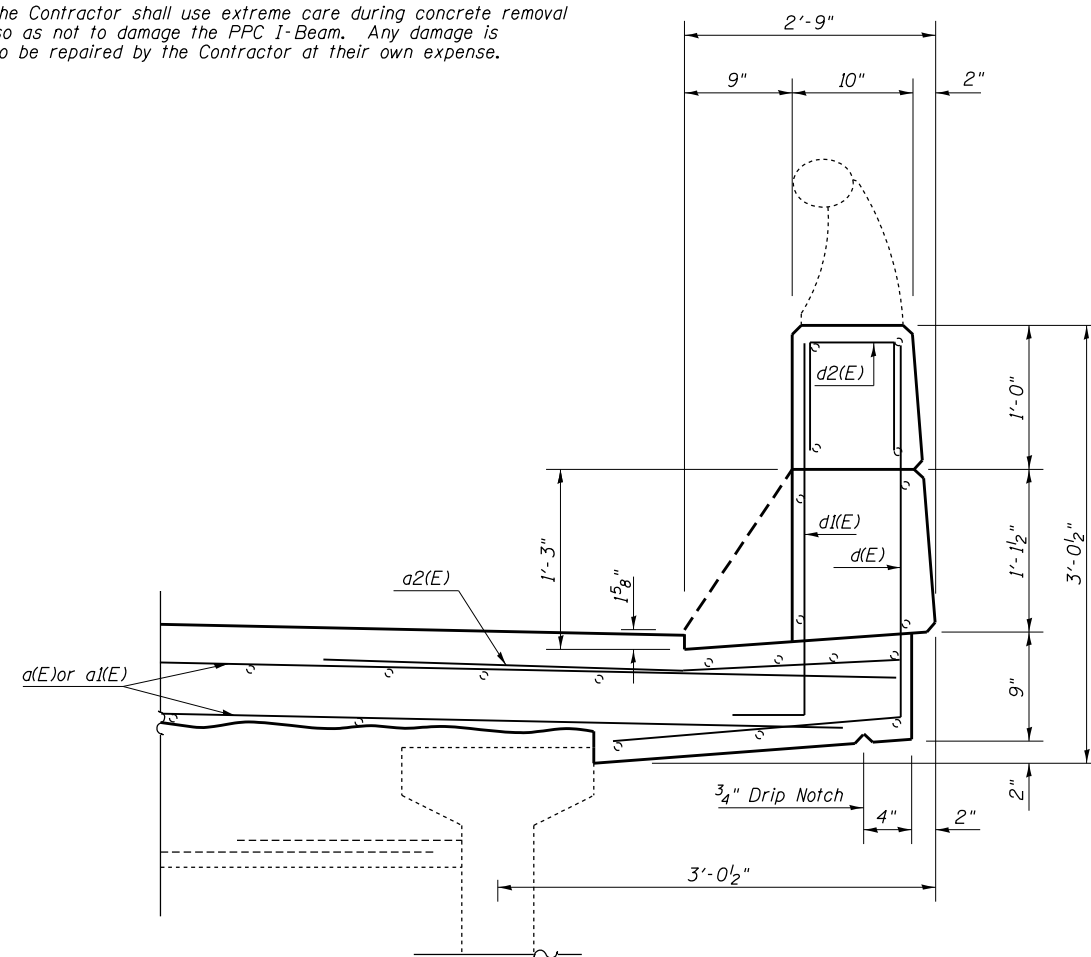
**SECTION C-C**



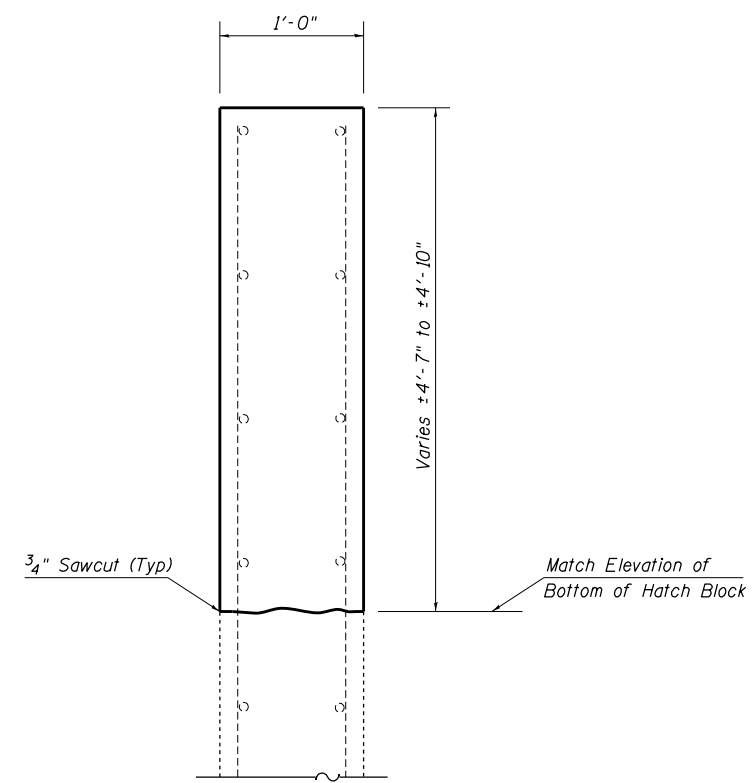
**SECTION D-D**

Hatching indicates concrete removal.

Note: The Contractor shall use extreme care during concrete removal so as not to damage the PPC I-Beam. Any damage is to be repaired by the Contractor at their own expense.



**SECTION THRU PARAPET**



**TYPICAL WINGWALL  
REMOVAL AND REPLACEMENT**

○ Existing Reinforcement  
● Proposed Reinforcement

FILE NAME =	USER NAME = teasleyck	DESIGNED - DFZ	REVISED -
ct:\pw\work\p\idot\teasleyck\d0307638\074591-sh-t-brd\details-05800770078.dgn		DRAWN - DFZ	REVISED -
Default	PLOT SCALE = 40.0000 ' / in.	CHECKED - KLB	REVISED -
	PLOT DATE = 10/29/2012	DATE - 7/23/12	REVISED -

**STATE OF ILLINOIS  
DEPARTMENT OF TRANSPORTATION**

<b>EXPANSION JOINT REPLACEMENT DETAIL</b>	
<b>SN. 058-0077 (EB) &amp; 058-0078 (WB)</b>	
SCALE:	SHEET 11 OF 15 SHEETS STA. TO STA.

F.A. RTE.	SECTION	COUNTY	TOTAL SHEETS	SHEET NO.
• 07	BRIDGE REPAIRS 2013-3	MACON	28	24
• FAI 72, FAU 7354	CONTRACT NO.		74591	
ILLINOIS FED. AID PROJECT				