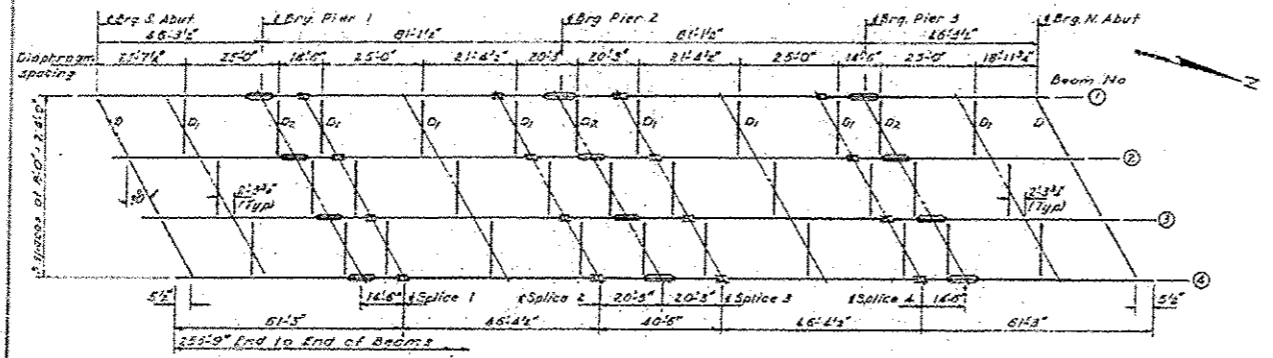
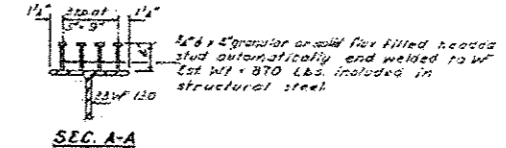


STATE OF ILLINOIS
DEPARTMENT OF PUBLIC WORKS & BUILDINGS
DIVISION OF HIGHWAYS

PROJECT NO.	74592	SHEET NO.	4
SECTION	FAYETTE	DATE	29 12 9

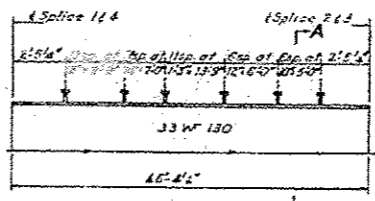


STRUCTURAL STEEL
(All Beams are 33W130)



SEC. A-A

2x4 x 1/2 angle or solid flat filled heads
flashed automatically and welded to W
Est Wt. 870 Lbs. included in
structural steel.



PARTIAL ELEVATION
(showing shear connectors)

BEAM PROPERTIES

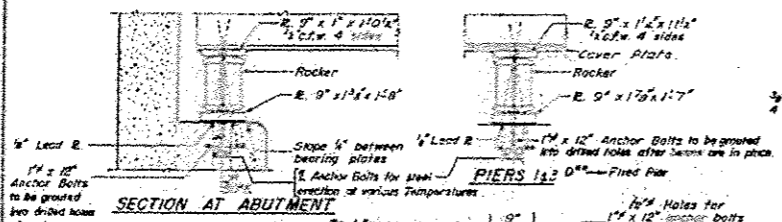
Steel Section	
Ix	1699.0 in. ⁴
Sx	404.8 in. ³
Syz	404.8 in. ³
Composite Section	
Ic	1831.3 in. ⁴
Sxc	1337.0 in. ³
Syc	574.9 in. ³

STRESS TABLE

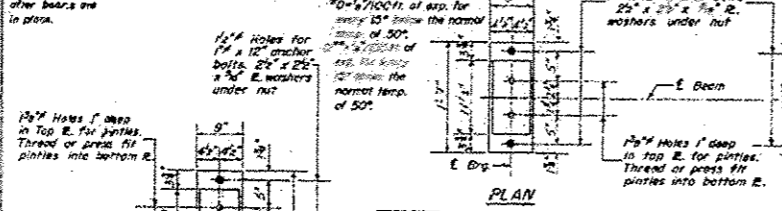
Table of Moments & Reactions

Moment	Reaction
At Pier	At Pier
D.L.	70.3 132
S.D.L.	18.0 101.9
T.L.	23.8 157.0
Imp.	83.4 168.9
Total	135.5 319.9

Bridge is symm. about Pier 2
Moments are in ft-Kips
Reactions are in Kips



SECTION AT ABUTMENT

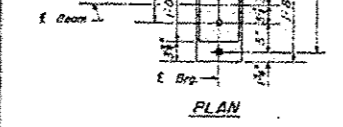


PLAN

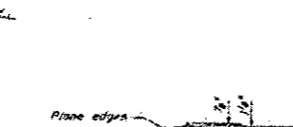
PLAN



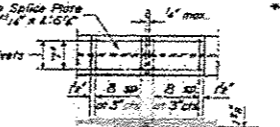
DETAIL OF COVER PLATE



DETAIL OF PINTLE



DETAIL OF BOLSTER
AT PIER 2



DETAIL OF SPLICE

ELEVATION TOP OF W

Location	8m 16'	0m 21.3'
L.Brg. S. Abut	593.40	593.52
L.Brg. Pier 1	593.91	594.01
Splice 1	594.06	594.18
Splice 2	594.31	594.43
L.Brg. Pier 2	594.31	594.43
Splice 3	594.31	594.43
Splice 4	594.06	594.18
L.Brg. Pier 3	594.91	594.03
L.Brg. N. Abut	593.40	593.52

* Lower all top of W Elev. by 0.04 Ft.

STRUCTURAL STEEL
F.A.I. DT 87 SEC. 26-2HB-1
FAYETTE COUNTY
STATION 320+00

DESIGNED: [Signature]
CHECKED: [Signature]
REVISIONS: [Table]
DATE: [Date]

I-2-C-7-2-62 Rev 11-9-62 Rev 11-16-63 Rev 12-10-63

• DT BRIDGE PAINTING 2013-3

FILE NAME	USER NAME	DESIGNED	REVISIONS	STATE OF ILLINOIS DEPARTMENT OF TRANSPORTATION	EXISTING STRUCTURE PLAN	F.A.I. RTE.	SECTION	COUNTY	TOTAL SHEETS	SHEET NO.
al:\pw\work\p\dot\stefanek\40307660-074592-sht-plan.dgn	stefanek	DRAWN	REVISIONS			57		FAYETTE	10	10
PLOT SCALE	100.0000 / in.	CHECKED	REVISIONS							CONTRACT NO. 74592
DATE	10/23/2012	DATE	REVISIONS							ILLINOIS FED. AID PROJECT