

1-18-2013 LETTING ITEM 053

STATE OF ILLINOIS
DEPARTMENT OF TRANSPORTATION
DIVISION OF HIGHWAYS

**PROPOSED
HIGHWAY PLANS**

F.A.I. ROUTE 57 (I-57)
SECTION D7 BRIDGE PAINTING 2013-3

BRIDGE PAINTING
FAYETTE COUNTY

C-97-119-12

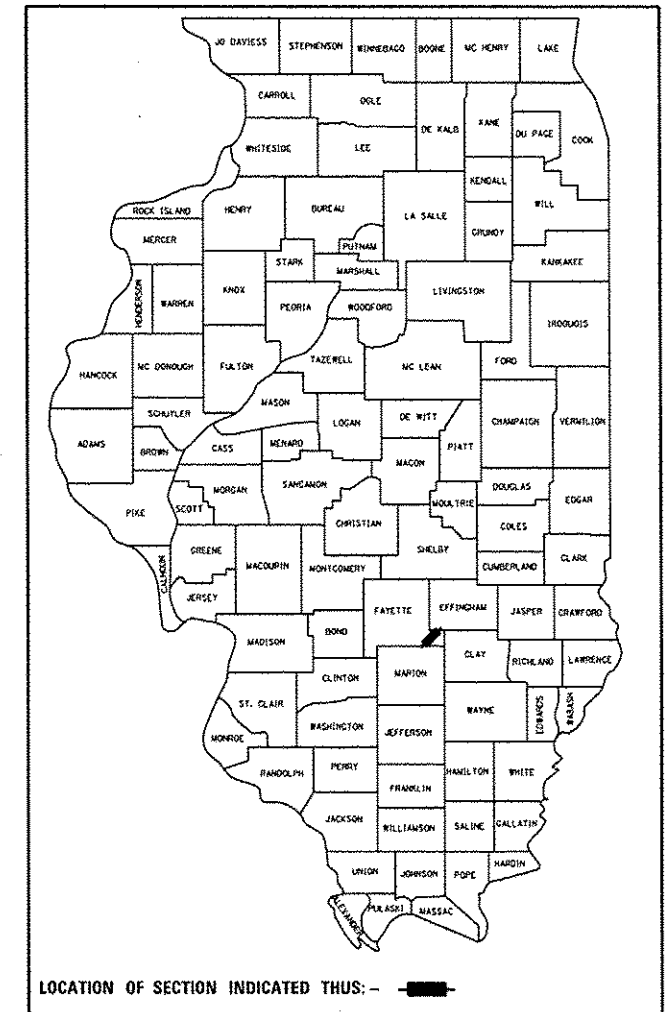
FOR INDEX OF SHEETS, SEE SHEET NO. 2

ADT = 14,900 (2011)

F.A.I. RTE.	SECTION	COUNTY	TOTAL SHEETS	SHEET NO.
57		FAYETTE	10	1
		ILLINOIS	CONTRACT NO. 74592	

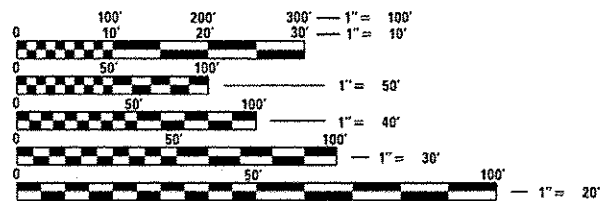
• D7 BRIDGE PAINTING 2013-3

D-97-055-12



LOCATION #2
STA. 3201 + 00.00
S.N. 026-0082

LOCATION #1
STA. 3045 + 98.80
S.N. 026-0053



FULL SIZE PLANS HAVE BEEN PREPARED USING STANDARD ENGINEERING SCALES. REDUCED SIZED PLANS WILL NOT CONFORM TO STANDARD SCALES. IN MAKING MEASUREMENTS ON REDUCED PLANS, THE ABOVE SCALES MAY BE USED.

J.U.L.I.E.
JOINT UTILITY LOCATION INFORMATION FOR EXCAVATION
1-800-892-0123
OR 811

PROJECT ENGINEER: TOM RONAN
PROJECT MANAGER: TOM RONAN
PHONE: (217)-342-8320
CONTRACT NO. 74592

STATE OF ILLINOIS
DEPARTMENT OF TRANSPORTATION
DIVISION OF HIGHWAYS

SUBMITTED Oct 23 20 12
Roger L. Driskell
DEPUTY DIRECTOR OF HIGHWAYS, REGION ENGINEER

Dec 7 20 12
John D. Baranzelli, P.E.
ENGINEER OF DESIGN AND ENVIRONMENT

Dec 7 20 12
William R. Frey, Jr.
DIRECTOR OF HIGHWAYS, CHIEF ENGINEER

**PRINTED BY THE AUTHORITY
OF THE STATE OF ILLINOIS**

INDEX OF SHEETS

SHEET NO.	DESCRIPTION
1	TITLE SHEET
2	INDEX OF SHEETS, GENERAL NOTES, LOCATION DESCRIPTIONS
3	SUMMARY OF QUANTITIES
4-10	EXISTING STRUCTURE PLANS

THE FOLLOWING STANDARDS ARE A PART OF THESE PLANS AND ARE INCLUDED AFTER SHEET NO. 10:

STANDARD 701101-02	TYPICAL APPLICATION OF TRAFFIC CONTROL DEVICES
STANDARD 701106-02	TYPICAL APPLICATION OF TRAFFIC CONTROL DEVICES
STANDARD 701400-05	TYPICAL APPLICATION OF TRAFFIC CONTROL DEVICES
STANDARD 701401-06	TYPICAL APPLICATION OF TRAFFIC CONTROL DEVICES
STANDARD 701402-09	TYPICAL APPLICATION OF TRAFFIC CONTROL DEVICES
STANDARD 701901-02	TYPICAL APPLICATION OF TRAFFIC CONTROL DEVICES

GENERAL NOTES

THIS SECTION SHALL BE CONSTRUCTED IN ACCORDANCE WITH THE PLANS, THE "STANDARD SPECIFICATIONS FOR ROAD AND BRIDGE CONSTRUCTION" ADOPTED JANUARY 1, 2012; THE SUPPLEMENTAL SPECIFICATIONS, THE RECURRING SPECIAL PROVISIONS, AND THE SPECIAL PROVISIONS INCLUDED IN THE PROPOSAL.

THE PROPOSED PROJECT IS LOCATED AT 2 LOCATIONS IN FAYETTE COUNTY IN DISTRICT 7. THE FIRST LOCATION IS AT STRUCTURE NUMBER 026-0053 ON I-57 APPROXIMATELY 2 MILES NORTH OF THE FARINA INTERCHANGE. THE SECOND LOCATION IS AT STRUCTURE NUMBER 026-0082 ON I-57 APPROXIMATELY 4.5 MILES NORTH OF THE FARINA INTERCHANGE.

THE WORK INCLUDED IN THIS SECTION CONSISTS OF CLEANING AND PAINTING BRIDGES AT 2 LOCATIONS AS SPECIFIED IN THE PLANS AND SPECIAL PROVISIONS.

THE STRUCTURAL STEEL SHALL BE CLEANED AND PAINTED AS SPECIFIED IN THE PLANS AND THE SPECIAL PROVISIONS.

ALL DECK DRAINS SHALL BE PAINTED ACCORDING TO THE REQUIREMENTS OF PAINT SYSTEM 1 - OZ/E/U. ANY DAMAGE CAUSED BY THE CONTRACTOR SHALL BE REPAIRED AT THEIR OWN EXPENSE AND NO ADDITIONAL COMPENSATION WILL BE ALLOWED.

ALL TRASH AND PAINTING DEBRIS, EXCLUDING WASTE BARRELS OR ROLL - OFF DUMPSTERS, SHALL BE REMOVED BEFORE BEGINNING WORK AT ANOTHER LOCATION.

ONLY STRUCTURAL STEEL IS TO BE PAINTED. ALL OTHER SURFACES WILL BE PROTECTED FROM BEING PAINTED. ALL PAINT AND OVERSPRAY WILL BE REMOVED AT THE CONTRACTOR'S EXPENSE.

THE SSPC QP1 AND QP2 PAINTING CONTRACTOR CERTIFICATION WILL BE REQUIRED FOR THIS PROJECT.

LOCATIONS DESCRIPTIONS

LOCATION #1

ROUTE: FAI 57
 MARKED: I-57
 SECTION: 26.1HB2
 STATION: 3045+98.80
 STRUCTURE NUMBER: 026-0053

TYPE OF BRIDGE: Wide Flange I Beams-4 Spans (5 Beams)
 LOCATION: 2 Miles north of the Farina Interchange
 FEATURE CARRIED/SPANNED: FAS 711 over I-57

COLOR OF THE FINISH COAT SHALL BE GRAY, MUNSELL 5B 7/1.

Cleaning and painting of the existing structural steel shall be as specified in the special provision for "Cleaning and Painting Existing Steel Structures". All structural steel, including beams, bearings and diaphragms shall be cleaned by SSPC-SP10- Near White Metal Blast Cleaning.

The designated areas cleaned per Near White Metal Blast Cleaning - SSPC-SP10 and the deck drain extensions shall be painted according to the requirements of Paint System 1 - OZ/E/U.

Two air monitors will be required at this location.

LOCATION #2

ROUTE: FAI 57
 MARKED: I-57
 SECTION: 26.2HB1
 STATION: 3201+00
 STRUCTURE NUMBER: 026-0082

TYPE OF BRIDGE: Wide Flange I Beams-4 Spans (4 Beams)
 LOCATION: 4.5 Miles north of the Farina Interchange
 FEATURE CARRIED/SPANNED: TR-542 over I-57

COLOR OF THE FINISH COAT SHALL BE GRAY, MUNSELL 5B 7/1.

Cleaning and painting of the existing structural steel shall be as specified in the special provision for "Cleaning and Painting Existing Steel Structures". All structural steel, including beams, bearings and diaphragms, shall be cleaned by SSPC-SP10- Near White Metal Blast Cleaning.

The designated areas cleaned per Near White Metal Blast Cleaning - SSPC-SP10 and the deck drain extensions shall be painted according to the requirements of Paint System 1 - OZ/E/U.

One air monitor will be required at this location.

• 07 BRIDGE PAINTING 2013-3

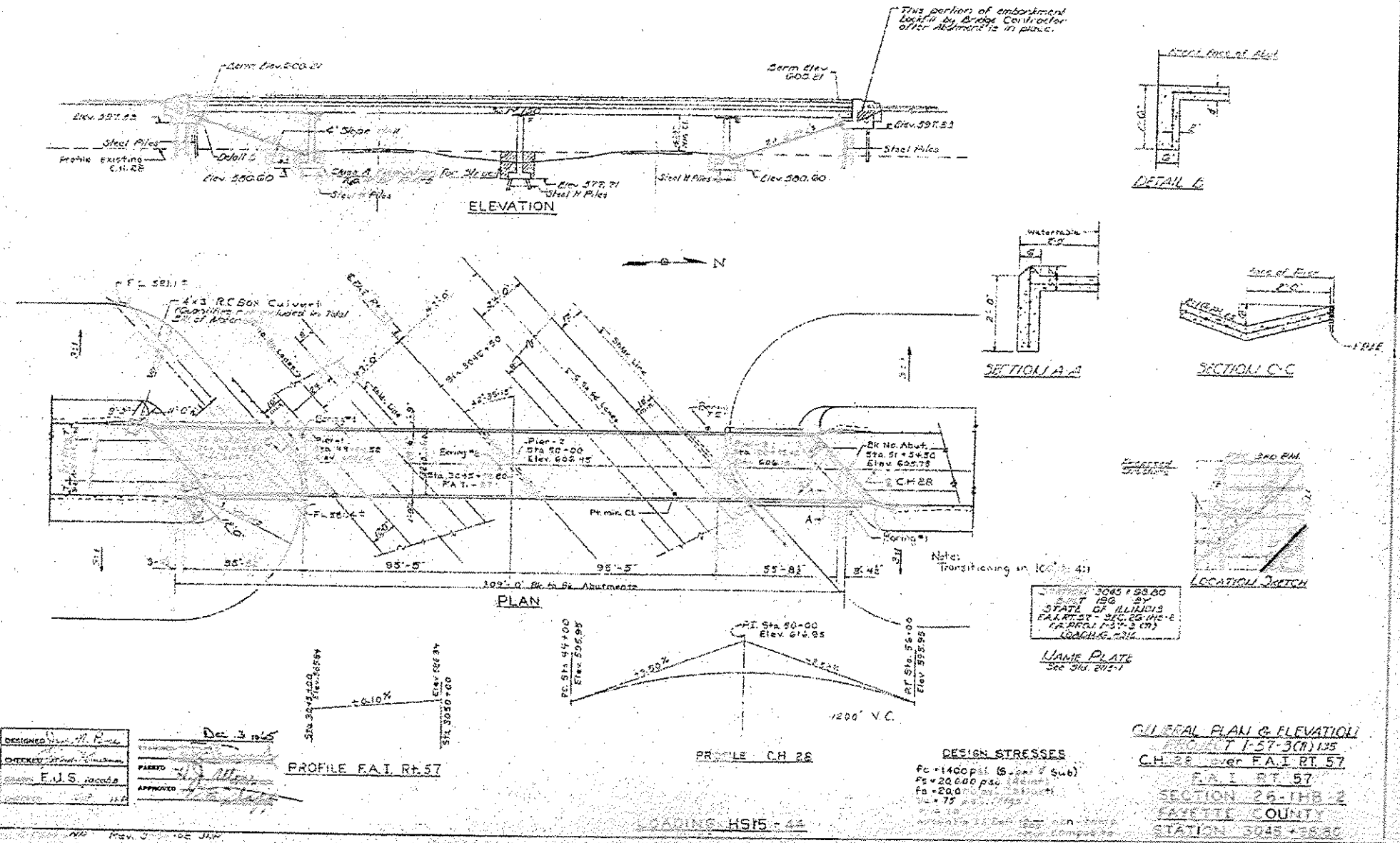
FILE NAME : c:\pwworkspace\pwworkspace\staff\mms\00307800\074592-sht-index.dgn	USER NAME : staffmms	DESIGNED -	REVISED -	STATE OF ILLINOIS DEPARTMENT OF TRANSPORTATION	INDEX OF SHEETS, GENERAL NOTES AND LOCATION DESCRIPTIONS	F.A.I. RTE.	SECTION	COUNTY	TOTAL SHEETS	SHEET NO.	
	Default	PLT SCALE = 100.0000' / in.	CHECKED -			REVISED -	57	-	FAYETTE	10	2
Default	PLT DATE = 11/15/2012	DATE -	REVISED -		SCALE: N/A	SHEET 1 OF 1 SHEETS	STA.	TO STA.	ILLINOIS FED. AID PROJECT		
								CONTRACT NO. 74592			

SUMMARY OF QUANTITIES			TOTAL QUANTITIES	CONSTRUCTION TYPE CODE		
CODE NO	ITEM	UNIT		100% STATE 0014		
67100100	MOBILIZATION	L SUM	1	1		
70100207	TRAFFIC CONTROL AND PROTECTION, STANDARD 701402	EACH	2	2		
70100800	TRAFFIC CONTROL AND PROTECTION, STANDARD 701401	L SUM	1	1		
Z0007112	CONTAINMENT AND DISPOSAL OF LEAD PAINT CLEANING RESIDUES	L SUM	1	1		
Z0010501	CLEANING AND PAINTING STEEL BRIDGE NO. 1	L SUM	1	1		
Z0010502	CLEANING AND PAINTING STEEL BRIDGE NO. 2	L SUM	1	1		

E.M. Chicago to N.E. Corner of South Road,
of Culvert 540' L.S. Sta. 2029+65 Elev. 187.28

STATE OF ILLINOIS
DEPARTMENT OF PUBLIC WORKS & BUILDINGS
DIVISION OF HIGHWAYS

PROJECT NO.	SECTION	SHEET NO.	TOTAL SHEETS
1-57-3(B)	FAYETTE	33	5



DESIGNED: *[Signature]*
CHECKED: *[Signature]*
DATE: Dec 3 1965

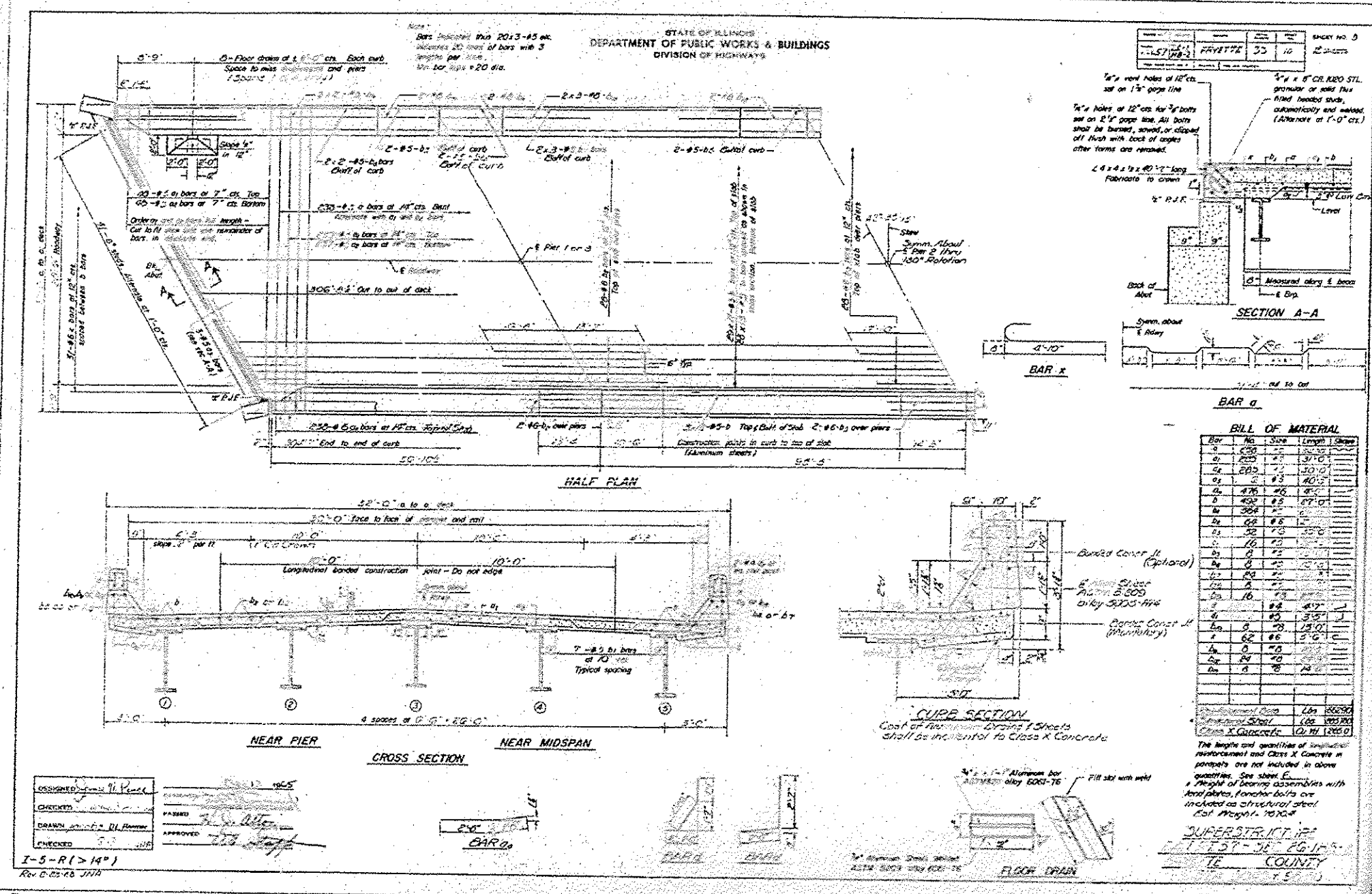
PROFILE F.A.I. RT. 57

PROFILE CH 28

DESIGN STRESSES

GENERAL PLAN & ELEVATION
PROJECT 1-57-3(B) 125
C.H. 28 over F.A.I. RT. 57
F.A.I. RT. 57
SECTION 26-IHB 2
FAYETTE COUNTY
STATION 3045+95.00

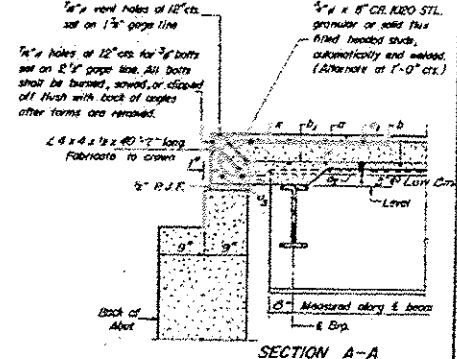
FILE NAME: c:\p\work\p\dot\stefanek\d0307650\074592-ehs-plan.dgn	USER NAME: stefanek	DESIGNED: -	REVISÉ: -	STATE OF ILLINOIS DEPARTMENT OF TRANSPORTATION	EXISTING STRUCTURE PLAN LOCATION #1 SN 026-0053	SCALE: N/A	SHEET 1 OF 7 SHEETS STA. TO STA.	F.A.I. RTE.	SECTION	COUNTY	TOTAL SHEETS	SHEET NO.
Default	Plot DATE: 10/23/2012	DRAWN: -	REVISÉ: -					57	.	FAYETTE	10	4
		CHECKED: -	REVISÉ: -					CONTRACT NO. 74592				
		DATE: -	REVISÉ: -					ILLINOIS FED. AID PROJECT				
								07 BRIDGE PAINTING 2013-3				



STATE OF ILLINOIS
DEPARTMENT OF PUBLIC WORKS & BUILDINGS
DIVISION OF HIGHWAYS

Notes:
Bars indicated thru 20x3-45 etc.
indicates 20 length of bars with 3
lengths per side.
Min. bar size #20 dia.

PROJECT NO. 3	57	10	12 SHEETS
---------------	----	----	-----------



Bar	No.	Size	Length	Quantity
a	203	#4	3'-10"	10
b	204	#4	3'-10"	10
c	205	#4	3'-10"	10
d	206	#4	3'-10"	10
e	207	#4	3'-10"	10
f	208	#4	3'-10"	10
g	209	#4	3'-10"	10
h	210	#4	3'-10"	10
i	211	#4	3'-10"	10
j	212	#4	3'-10"	10
k	213	#4	3'-10"	10
l	214	#4	3'-10"	10
m	215	#4	3'-10"	10
n	216	#4	3'-10"	10
o	217	#4	3'-10"	10
p	218	#4	3'-10"	10
q	219	#4	3'-10"	10
r	220	#4	3'-10"	10
s	221	#4	3'-10"	10
t	222	#4	3'-10"	10
u	223	#4	3'-10"	10
v	224	#4	3'-10"	10
w	225	#4	3'-10"	10
x	226	#4	3'-10"	10
y	227	#4	3'-10"	10
z	228	#4	3'-10"	10
aa	229	#4	3'-10"	10
ab	230	#4	3'-10"	10
ac	231	#4	3'-10"	10
ad	232	#4	3'-10"	10
ae	233	#4	3'-10"	10
af	234	#4	3'-10"	10
ag	235	#4	3'-10"	10
ah	236	#4	3'-10"	10
ai	237	#4	3'-10"	10
aj	238	#4	3'-10"	10
ak	239	#4	3'-10"	10
al	240	#4	3'-10"	10

Coat of Reinforcing Bars & Sheets shall be incidental to Class X Concrete.

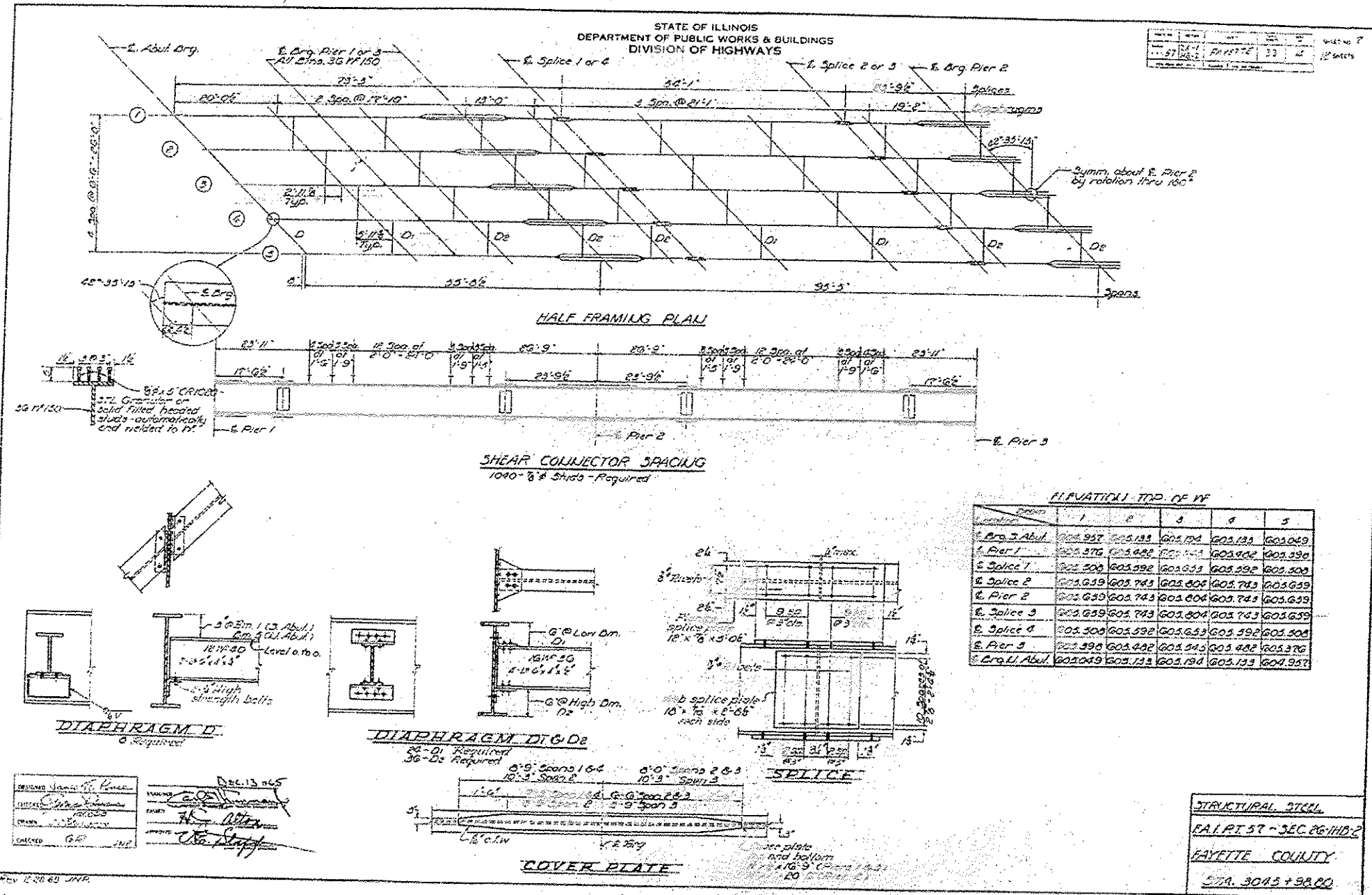
The lengths and quantities of longitudinal reinforcement and Class X Concrete in parapets are not included in above quantities. See sheet E.

A height of bearing assemblies with steel plates, anchor bolts are included as structural steel. Est. Weight: 7500#.

SUPERSTRUCTURE
ILLINOIS
COUNTY

STATE OF ILLINOIS
DEPARTMENT OF PUBLIC WORKS & BUILDINGS
DIVISION OF HIGHWAYS

PROJECT NO.	74592	SHEET NO.	6
SECTION	FAYETTE	DATE	12/23/12



ELEVATIONS TOP OF WF

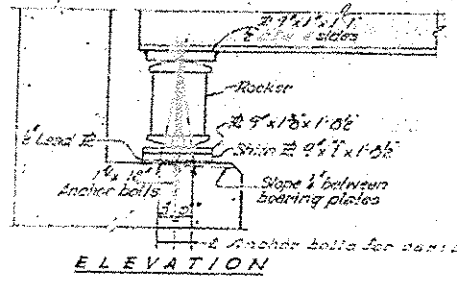
Component	1	2	3	4	5
E. Abut. Drg.	605.957	605.133	605.133	605.133	605.049
E. Pier 1	605.376	605.442	605.442	605.442	605.390
E. Splice 1	605.500	605.592	605.633	605.592	605.500
E. Splice 2	605.639	605.743	605.804	605.743	605.639
E. Pier 2	605.653	605.743	605.804	605.743	605.639
E. Splice 3	605.639	605.743	605.804	605.743	605.639
E. Splice 4	605.500	605.592	605.633	605.592	605.500
E. Pier 3	605.390	605.442	605.442	605.442	605.376
E. Crq. Li. Abut.	605.049	605.133	605.133	605.133	604.957

STRUCTURAL STEEL

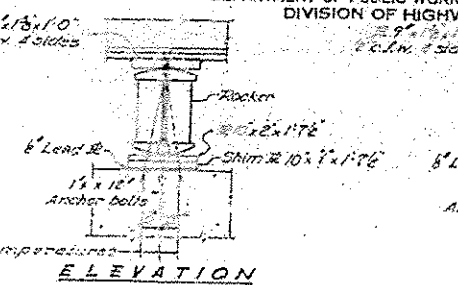
PA. RT. 57 - SEC. PG. 111B.2
FAYETTE COUNTY
STA. 3085 + 98.00

STATE OF ILLINOIS
DEPARTMENT OF PUBLIC WORKS & BUILDINGS
DIVISION OF HIGHWAYS

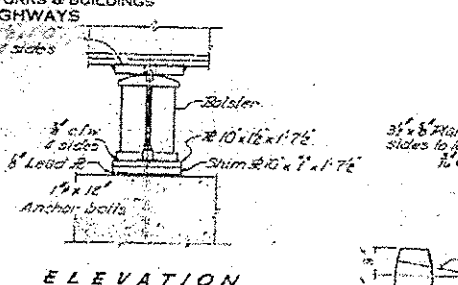
PROJECT NO. 74592
SECTION 57
COUNTY FAYETTE
SHEET NO. 7



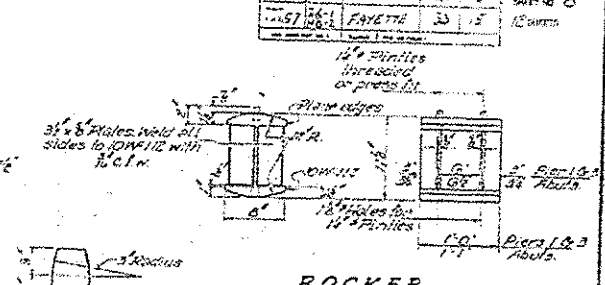
ELEVATION



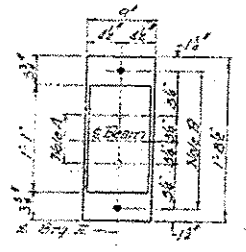
ELEVATION



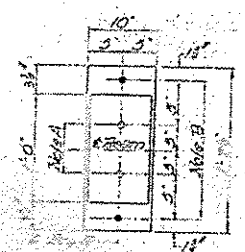
ELEVATION



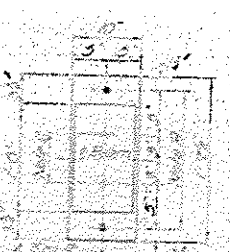
ROCKER



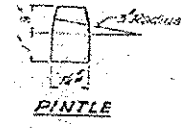
PLAN @ ABUTMENT



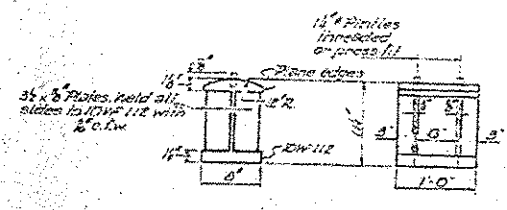
PLAN @ PIER 1 & 3



PLAN @ PIER 2



PIN & ROLLER



BOLSTER

NOTES ON SETTING OF ANCHOR BOLTS AT EXP BRGS.

- a) D' (Side of brg away from fixed brg)
 - $D' = 6$ per each 100' increment of expansion for every 10' fall from temp. of 50°F
- b) D'' (Side of brg toward fixed brg)
 - $D'' = 6$ per each 100' increment of expansion for every 10' rise from temp. of 50°F
- c) After beams have been erected and dimension of D' & D'' determined anchor bolts shall be placed in drilled holes and grouted.

BEARING ASSEMBLY DETAILS

TABLE OF MOMENTS & REACTIONS - INTERIOR BEAMS

MOMENTS	REACTIONS					
	1	2	3	4	5	6
D.L.	139	268	301	103	871	1040
L.L.	220	430	332	230	378	314
Imp.	73	71	81			
TOTAL	432	769	714	333	1249	1354

COMPOSITE BEAM

TABLE OF MOMENTS & SHEARS - INTERIOR BEAMS

MOMENTS	SHEARS	
	1	2
D.L.	139	268
L.L.	220	430
Imp.	73	71
TOTAL	432	769

STEEL SECTIONS

SECTION	TYPE	SIZE
1	W	36
2	W	36
3	W	36
4	W	36
5	W	36
6	W	36
7	W	36
8	W	36
9	W	36
10	W	36
11	W	36
12	W	36
13	W	36
14	W	36
15	W	36
16	W	36
17	W	36
18	W	36
19	W	36
20	W	36
21	W	36
22	W	36
23	W	36
24	W	36
25	W	36
26	W	36
27	W	36
28	W	36
29	W	36
30	W	36
31	W	36
32	W	36
33	W	36
34	W	36
35	W	36
36	W	36
37	W	36
38	W	36
39	W	36
40	W	36
41	W	36
42	W	36
43	W	36
44	W	36
45	W	36
46	W	36
47	W	36
48	W	36
49	W	36
50	W	36

TABLE OF DIMENSIONS

SECTION	1	2	3	4	5
1	10	10	10	10	10
2	10	10	10	10	10
3	10	10	10	10	10
4	10	10	10	10	10
5	10	10	10	10	10
6	10	10	10	10	10
7	10	10	10	10	10
8	10	10	10	10	10
9	10	10	10	10	10
10	10	10	10	10	10
11	10	10	10	10	10
12	10	10	10	10	10
13	10	10	10	10	10
14	10	10	10	10	10
15	10	10	10	10	10
16	10	10	10	10	10
17	10	10	10	10	10
18	10	10	10	10	10
19	10	10	10	10	10
20	10	10	10	10	10
21	10	10	10	10	10
22	10	10	10	10	10
23	10	10	10	10	10
24	10	10	10	10	10
25	10	10	10	10	10
26	10	10	10	10	10
27	10	10	10	10	10
28	10	10	10	10	10
29	10	10	10	10	10
30	10	10	10	10	10
31	10	10	10	10	10
32	10	10	10	10	10
33	10	10	10	10	10
34	10	10	10	10	10
35	10	10	10	10	10
36	10	10	10	10	10
37	10	10	10	10	10
38	10	10	10	10	10
39	10	10	10	10	10
40	10	10	10	10	10
41	10	10	10	10	10
42	10	10	10	10	10
43	10	10	10	10	10
44	10	10	10	10	10
45	10	10	10	10	10
46	10	10	10	10	10
47	10	10	10	10	10
48	10	10	10	10	10
49	10	10	10	10	10
50	10	10	10	10	10

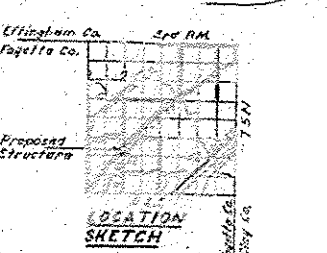
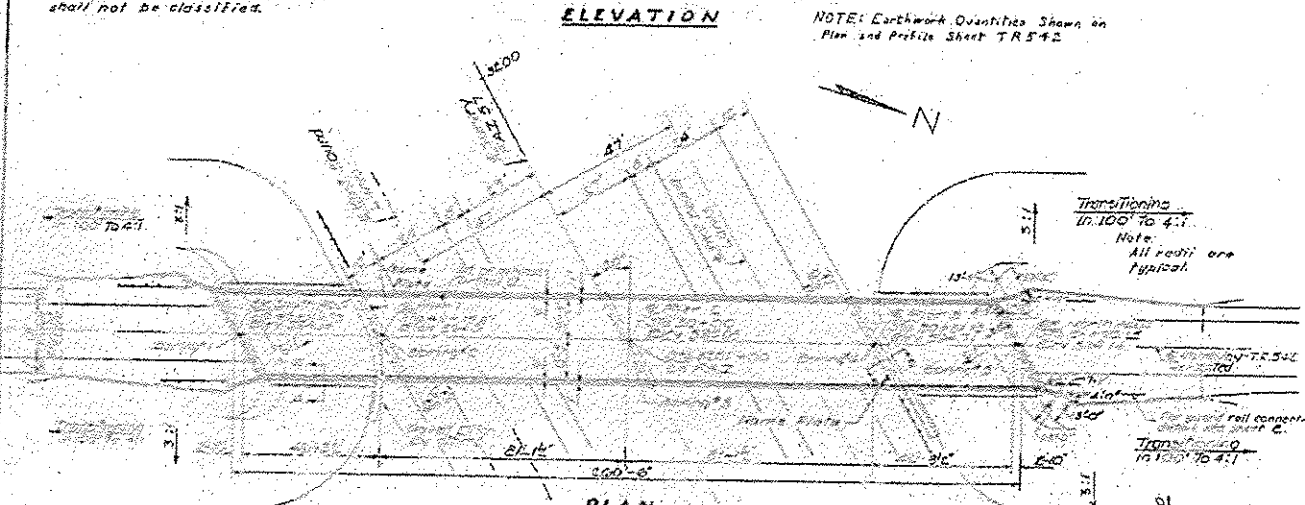
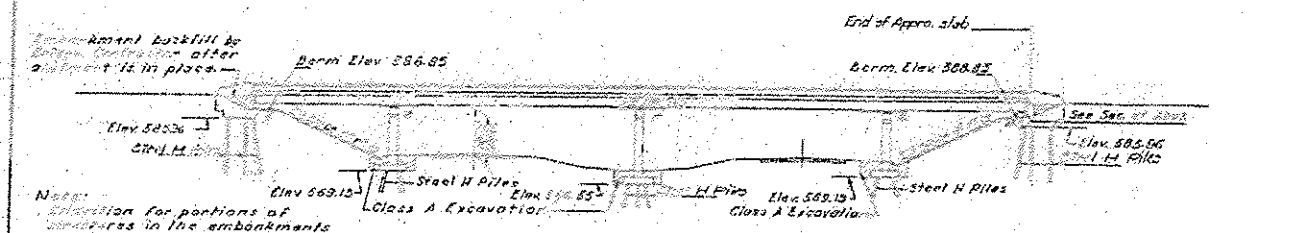
DESIGNED BY: [Signature]
DRAWN BY: [Signature]
CHECKED BY: [Signature]
DATE: 10/23/2012

BEARING DETAILS
I.R.T. 17-SEC. 100
FAYETTE COUNTY
STA. 30851+00

BM 1. UND N. IN FOOT 12" EIR.
 (S. 27. 5201 - 25 Elev. 509.42)

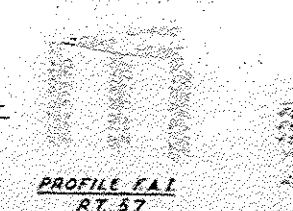
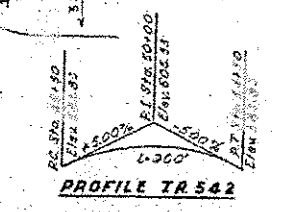
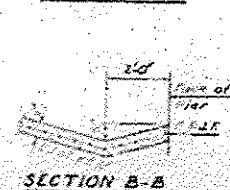
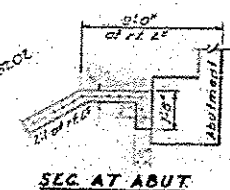
STATE OF ILLINOIS
 DEPARTMENT OF PUBLIC WORKS & BUILDINGS
 DIVISION OF HIGHWAYS

PROJECT NO.	26-2	FAYETTE	29	9	SHEET NO. 1
DATE	10/23				9 SHEETS



STATION 3201+00
 BUILT 196 BY
 STATE OF ILLINOIS
 F.A.I. RT 57 SEC. 26-2NB-1
 F.A. PROJ. ST-8(H)
 LOADING HS 15

NAME PLATE
 (See 510.2113-B)



GENERAL NOTES

Coarse aggregate to be used in parapet horizontal and end post must be free of silt, limestone, lignite and soft sandstone.

The concrete floor slab shall be finished in accordance with Art 2119 of the Std. Specifications.

Slope Wall shall be reinforced with welded wire fabric 6"x6" mesh, weighing 58# per 100 sq. ft.

All reinforcement bars shall be lapped 20 dia unless otherwise shown.

All structural steel shall conform to A.S.T.M. designation A36.

Rivets 3/4" Open holes 1/4" unless otherwise noted.

Anchor bolts shall be set before fastening diaphragm over supports.

Exposed surfaces of the expansion devices, inaccessible after erection, shall receive two coats of red lead paint. All other surfaces shall be given one shop coat of red lead paint. Anchor studs and shear connectors shall not be painted.

Expansion devices are included in the quantity of structural steel. Est. Weight = 850 Lbs.

Except as otherwise shown, all structural steel shall receive one shop coat of red lead paint and two field coats of paint. See Special Provisions for field paint.

Steel piles at abutments shall be driven in holes prepared thru the embankment in accordance with Art 60.9 (c) of the Std. Specs.

The contractor shall drive one steel test pile at the South abutment and one steel test pile at pier 2, both in a permanent location, as directed by the Engineer before ordering the remainder of piles.

Permanent metal forms will not be allowed in forming the concrete deck.

FIELD MEASUREMENT OF THE STRUCTURE ACCORDING TO THE SECTION SHOWN IS AN ASSUMPTION OF THE ENGINEER. THE CONTRACTOR SHALL VERIFY THE DIMENSIONS OF THE STRUCTURE WITH THE FIELD MEASUREMENTS. THE CONTRACTOR SHALL BE RESPONSIBLE FOR THE FIELD MEASUREMENTS.

FIELD MEASUREMENTS ON THE SAME PROPERTY SHALL BE MADE IN THE FIELD AFTER THE STRUCTURE HAS BEEN BUILT AND THE MEASUREMENTS SHALL BE MADE IN THE FIELD.

TOTAL BILL OF MATERIAL

Item	Unit	Quantity	Subtotal	Total
Class A Excav. for Structures	Cu Yds.	170	170	170
Class A Concrete	Cu Yds.	106	106	106
Struct. Steel	Lbs.	17,130	17,130	17,130
Aluminum Shearlag	Lbs.	850	850	850
Reinforcement Bars	Lbs.	51240	17,130	17,130
Steel Piles (B.P.P.S)	Lin. Ft.	144	144	144
Two Steel Piles (S.P.P.S)	Eq.	2	2	2
Name Plates	Eq.	2	2	2
Slope Wall (S.W.)	Sq. Yds.	380	380	380

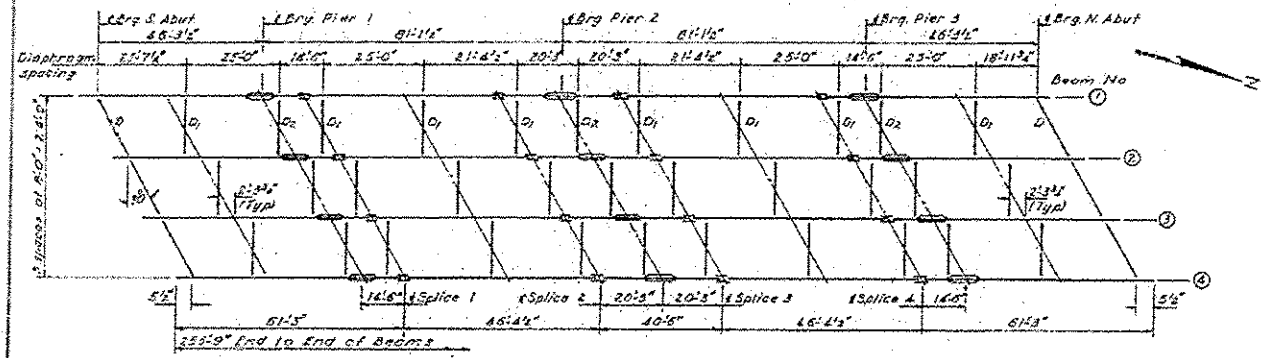
* Includes applications on inside vertical face, top & expanded end of the abutment wings.

** Includes excavation for Slope Wall.

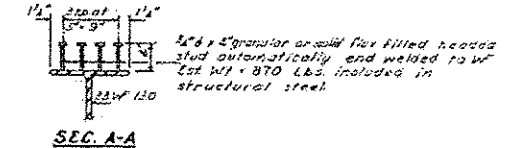
GENERAL PLAN / ELEVATION
 PROJ. ST-8(H)
 TR 542 OVER F.A.I. RT 57
 F.A.I. RT 57 SEC. 26-2NB-1
 FAYETTE COUNTY
 STATION 3201+00

STATE OF ILLINOIS
DEPARTMENT OF PUBLIC WORKS & BUILDINGS
DIVISION OF HIGHWAYS

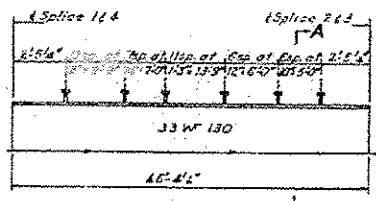
PROJECT NO.	74592	SHEET NO.	4
SECTION	FAYETTE	DATE	2/9/12
		TOTAL SHEETS	9



STRUCTURAL STEEL
(All Beams are 33W130)



SEC. A-A



PARTIAL ELEVATION
(showing shear connectors)

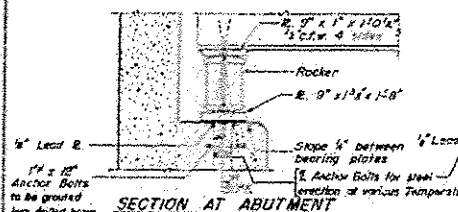
BEAM PROPERTIES

Steel Section	
I _x	1699.0 in. ⁴
S _{Tx}	404.8 in. ³
S _{ax}	404.8 in. ³
Composite Section	
I _c	1831.3 in. ⁴
S _{rc}	1337.0 in. ³
S _{bc}	574.9 in. ³

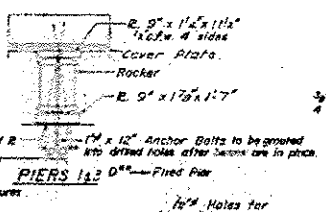
STRESS TABLE

Table of Moments & Reaction

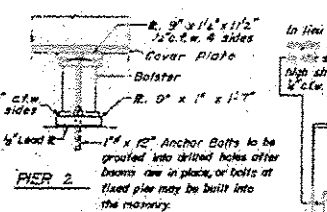
Moment	Reaction
At Pier 1	At Pier 1
At Pier 2	At Pier 2
At Pier 3	At Pier 3
At Pier 4	At Pier 4
At Pier 5	At Pier 5
At Pier 6	At Pier 6
At Pier 7	At Pier 7
At Pier 8	At Pier 8
At Pier 9	At Pier 9
At Pier 10	At Pier 10
At Pier 11	At Pier 11
At Pier 12	At Pier 12
At Pier 13	At Pier 13
At Pier 14	At Pier 14
At Pier 15	At Pier 15
At Pier 16	At Pier 16
At Pier 17	At Pier 17
At Pier 18	At Pier 18
At Pier 19	At Pier 19
At Pier 20	At Pier 20
At Pier 21	At Pier 21
At Pier 22	At Pier 22
At Pier 23	At Pier 23
At Pier 24	At Pier 24
At Pier 25	At Pier 25
At Pier 26	At Pier 26
At Pier 27	At Pier 27
At Pier 28	At Pier 28
At Pier 29	At Pier 29
At Pier 30	At Pier 30
At Pier 31	At Pier 31
At Pier 32	At Pier 32
At Pier 33	At Pier 33
At Pier 34	At Pier 34
At Pier 35	At Pier 35
At Pier 36	At Pier 36
At Pier 37	At Pier 37
At Pier 38	At Pier 38
At Pier 39	At Pier 39
At Pier 40	At Pier 40
At Pier 41	At Pier 41
At Pier 42	At Pier 42
At Pier 43	At Pier 43
At Pier 44	At Pier 44
At Pier 45	At Pier 45
At Pier 46	At Pier 46
At Pier 47	At Pier 47
At Pier 48	At Pier 48
At Pier 49	At Pier 49
At Pier 50	At Pier 50
At Pier 51	At Pier 51
At Pier 52	At Pier 52
At Pier 53	At Pier 53
At Pier 54	At Pier 54
At Pier 55	At Pier 55
At Pier 56	At Pier 56
At Pier 57	At Pier 57
At Pier 58	At Pier 58
At Pier 59	At Pier 59
At Pier 60	At Pier 60
At Pier 61	At Pier 61
At Pier 62	At Pier 62
At Pier 63	At Pier 63
At Pier 64	At Pier 64
At Pier 65	At Pier 65
At Pier 66	At Pier 66
At Pier 67	At Pier 67
At Pier 68	At Pier 68
At Pier 69	At Pier 69
At Pier 70	At Pier 70
At Pier 71	At Pier 71
At Pier 72	At Pier 72
At Pier 73	At Pier 73
At Pier 74	At Pier 74
At Pier 75	At Pier 75
At Pier 76	At Pier 76
At Pier 77	At Pier 77
At Pier 78	At Pier 78
At Pier 79	At Pier 79
At Pier 80	At Pier 80
At Pier 81	At Pier 81
At Pier 82	At Pier 82
At Pier 83	At Pier 83
At Pier 84	At Pier 84
At Pier 85	At Pier 85
At Pier 86	At Pier 86
At Pier 87	At Pier 87
At Pier 88	At Pier 88
At Pier 89	At Pier 89
At Pier 90	At Pier 90
At Pier 91	At Pier 91
At Pier 92	At Pier 92
At Pier 93	At Pier 93
At Pier 94	At Pier 94
At Pier 95	At Pier 95
At Pier 96	At Pier 96
At Pier 97	At Pier 97
At Pier 98	At Pier 98
At Pier 99	At Pier 99
At Pier 100	At Pier 100



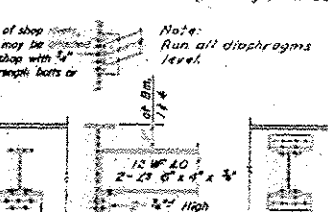
SECTION AT ABUTMENT



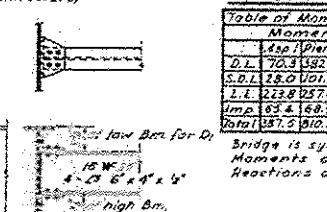
PIER 1



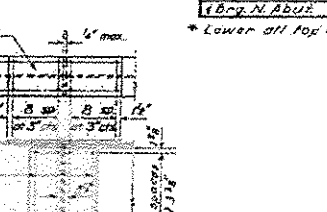
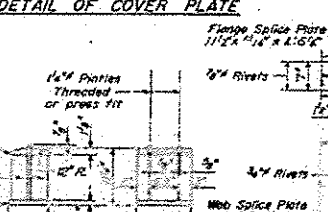
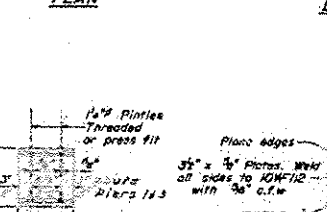
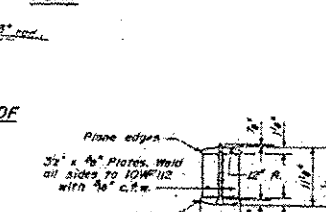
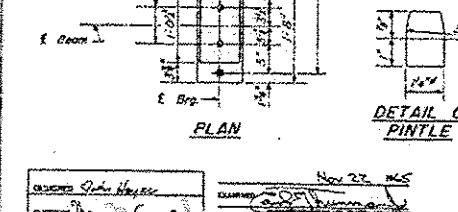
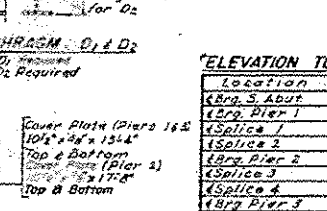
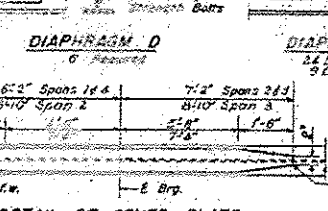
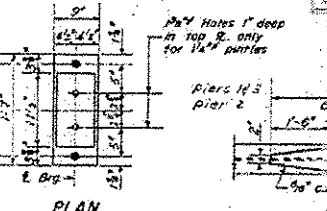
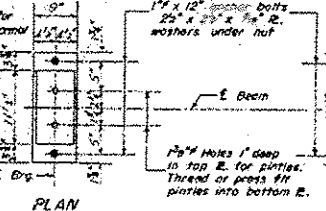
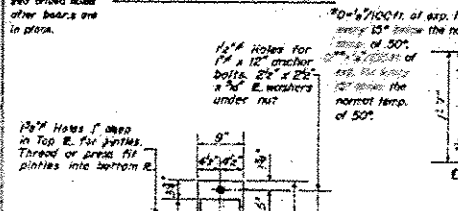
PIER 2



DIAPHRAGM D



DIAPHRAGM D1 & D2



ELEVATION TOP OF W*

Location	8m 16'	0m 26'
L.Brg. S. Abut	593.40	593.52
L.Brg. Pier 1	593.91	594.01
L.Brg. Pier 2	594.06	594.18
L.Brg. Pier 3	594.31	594.43
L.Brg. Pier 4	594.31	594.43
L.Brg. Pier 5	594.06	594.18
L.Brg. Pier 6	593.91	594.01
L.Brg. N. Abut	593.40	593.52

* Lower all top of W Elev. by 0.04 Ft.

DESIGNED BY: [Signature]
CHECKED BY: [Signature]
REVISIONS: [Table]
DATE: [Date]

DESIGNED BY: [Signature]
CHECKED BY: [Signature]
REVISIONS: [Table]
DATE: [Date]

DESIGNED BY: [Signature]
CHECKED BY: [Signature]
REVISIONS: [Table]
DATE: [Date]

DESIGNED BY: [Signature]
CHECKED BY: [Signature]
REVISIONS: [Table]
DATE: [Date]

DESIGNED BY: [Signature]
CHECKED BY: [Signature]
REVISIONS: [Table]
DATE: [Date]

STRUCTURAL STEEL
F.A.I. DT 87 SEC. 26-2HB-1
FAYETTE COUNTY
STATION 320+00

I-2-C-7-2-62 Rev 11-9-62 Rev 11-16-63 Rev 12-10-63

• DT BRIDGE PAINTING 2013-3

FILE NAME	USER NAME	DESIGNED	REVISIONS	STATE OF ILLINOIS DEPARTMENT OF TRANSPORTATION	EXISTING STRUCTURE PLAN	F.A.I. RTE.	SECTION	COUNTY	TOTAL SHEETS	SHEET NO.
al:\pw\work\p\dot\steffenmk\40307660-074592-sht-plan.dgn	steffenmk	DRAWN	REVISIONS			57		FAYETTE	10	10
PLOT SCALE	PLOT DATE	CHECKED	REVISIONS		SCALE: N/A					CONTRACT NO. 74592
100.0000 / in.	10/23/2012	DATE	REVISIONS		SHEET 1 OF 7 SHEETS	STA.	TO STA.			ILLINOIS FED. AID PROJECT