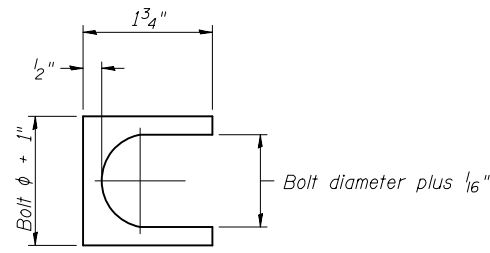
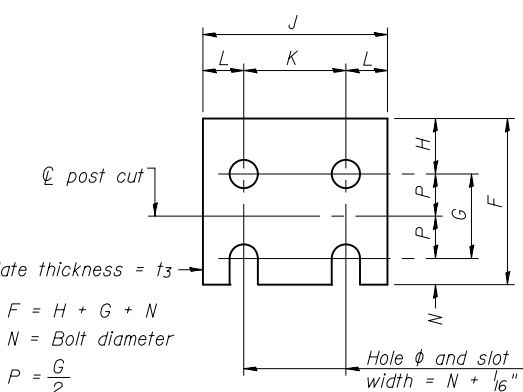


ELEVATION



SHIM DETAIL

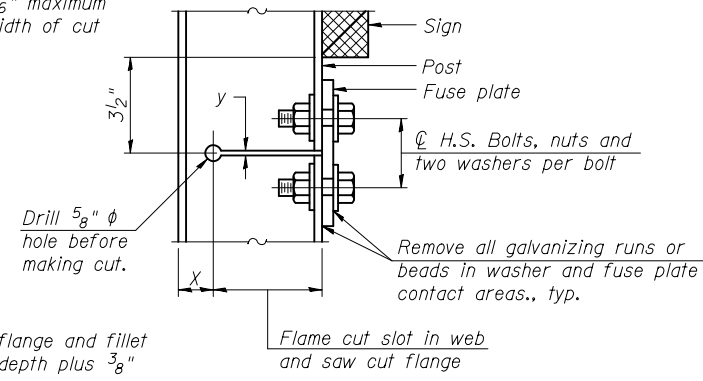
Furnish two 0.01" thick and two 0.03" thick stainless steel or brass (ASTM B36) shims per post.



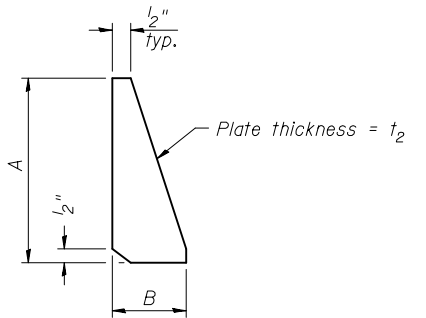
FUSE PLATE DATA		
N = Bolt Diameter	G	H
1/2"	2"	1 1/8"
5/8"	2 1/4"	1 1/4"
3/4"	2 1/2"	1 3/8"
7/8"	2 3/4"	1 1/2"
1"	3"	1 5/8"
1 1/8"	3 1/4"	1 3/4"
1 1/4"	3 1/2"	1 7/8"

FUSE PLATE DETAIL
(Install with notches down.)

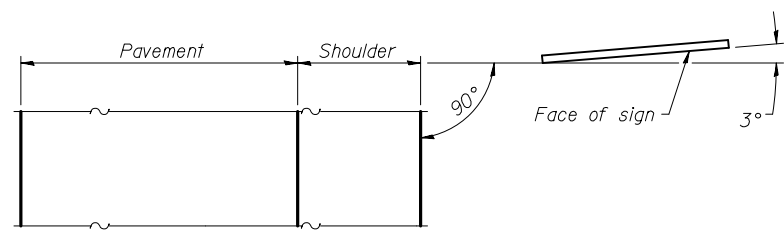
$y = 3/16"$ maximum width of cut



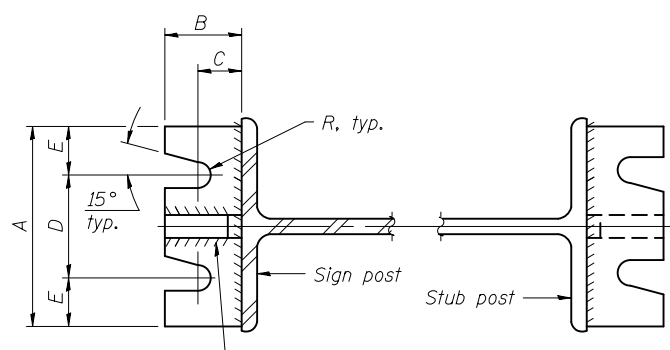
DETAIL H



STIFFENER PLATE DETAIL
Diameter

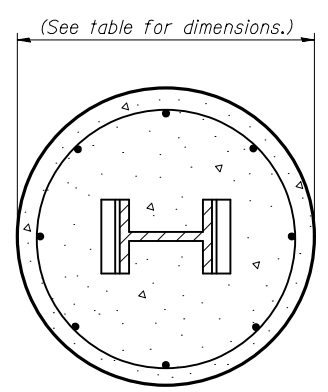


LOCATION SKETCH

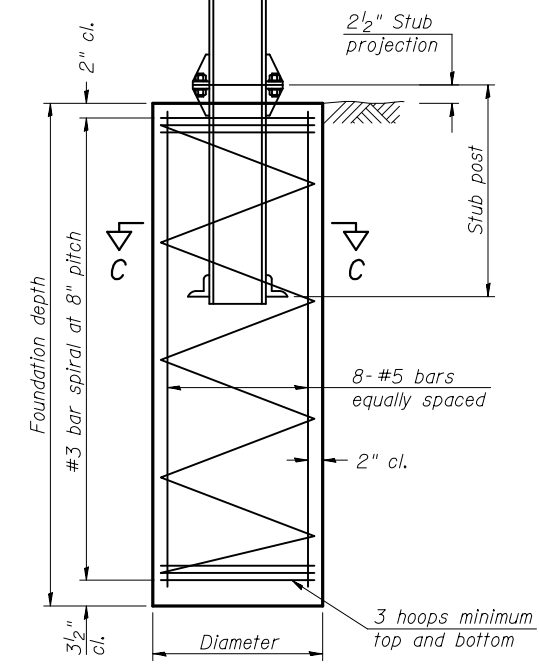


SECTION A-A

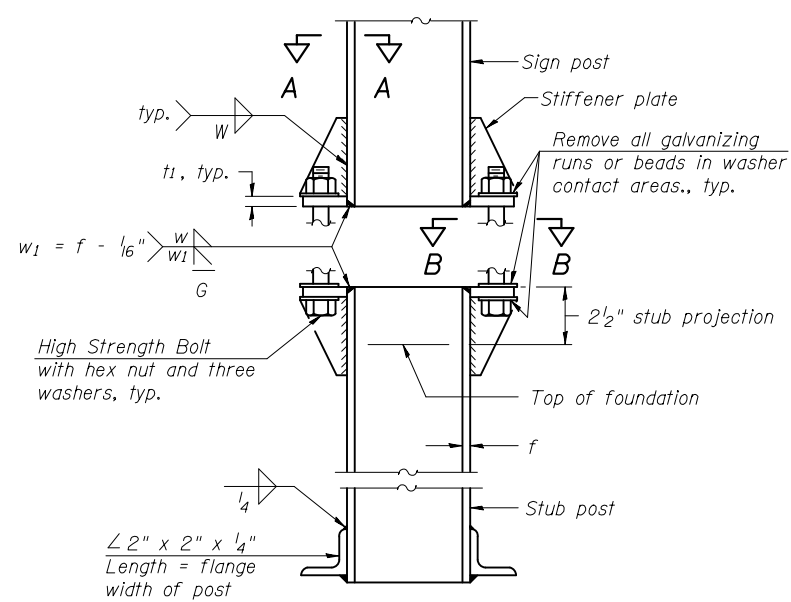
SECTION B-B



SECTION C-C



SECTION D-D



ELEVATION SIGN POST & STUB POST

GENERAL NOTES

Posts shall be plumbed by using shims with post-to-stub post connection bolts snug tight only. Final tightening of all High Strength Bolts shall be in accordance with Article 727.05 and threads at the junction of the bolt and nut shall be burred or center punched to prevent the nut from loosening.

LOADING: 80 m.p.h. wind with 30% gust factor, normal to sign.

DESIGN STRESSES:
Structural steel - 20,000 p.s.i.
Reinforcing steel - 20,000 p.s.i.
Concrete - 1,400 p.s.i.
Footing soil pressure - 2,000 p.s.f.

After fabrication, the post, fuse plate and upper 6", min. of the stub post shall be hot-dip galvanized in accordance with AASHTO M111. All bolts, nuts and washers shall be hot-dip galvanized in accordance with AASHTO M232.

Work this sheet with Base Sheet BAW-A-2.

BAW-A-1

1-20-11

(Sheet 1 of 2)

FILE NAME =	USER NAME = bergmd
DESIGNED -	REVISED -
DRAWN -	REVISED -
PLOT SCALE = 100.0000' / 111.	CHECKED -
PLOT DATE = 10/17/2012	DATE -

DESIGNED -	REVISED -
DRAWN -	REVISED -
CHECKED -	REVISED -
DATE -	REVISED -

**STATE OF ILLINOIS
DEPARTMENT OF TRANSPORTATION**

**BREAK-AWAY WIDE FLANGE
STEEL SIGN POST DETAILS**

SCALE:	SHEET NO.	OF SHEETS	STA.	TO STA.
--------	-----------	-----------	------	---------

F.A.I. RTE.	SECTION	COUNTY	TOTAL SHEETS	SHEET NO.
255	60-(7,8)RS-2	MADISON	293	142
CONTRACT NO. 76A89				
FED. ROAD DIST. NO. ILLINOIS FED. AID PROJECT				