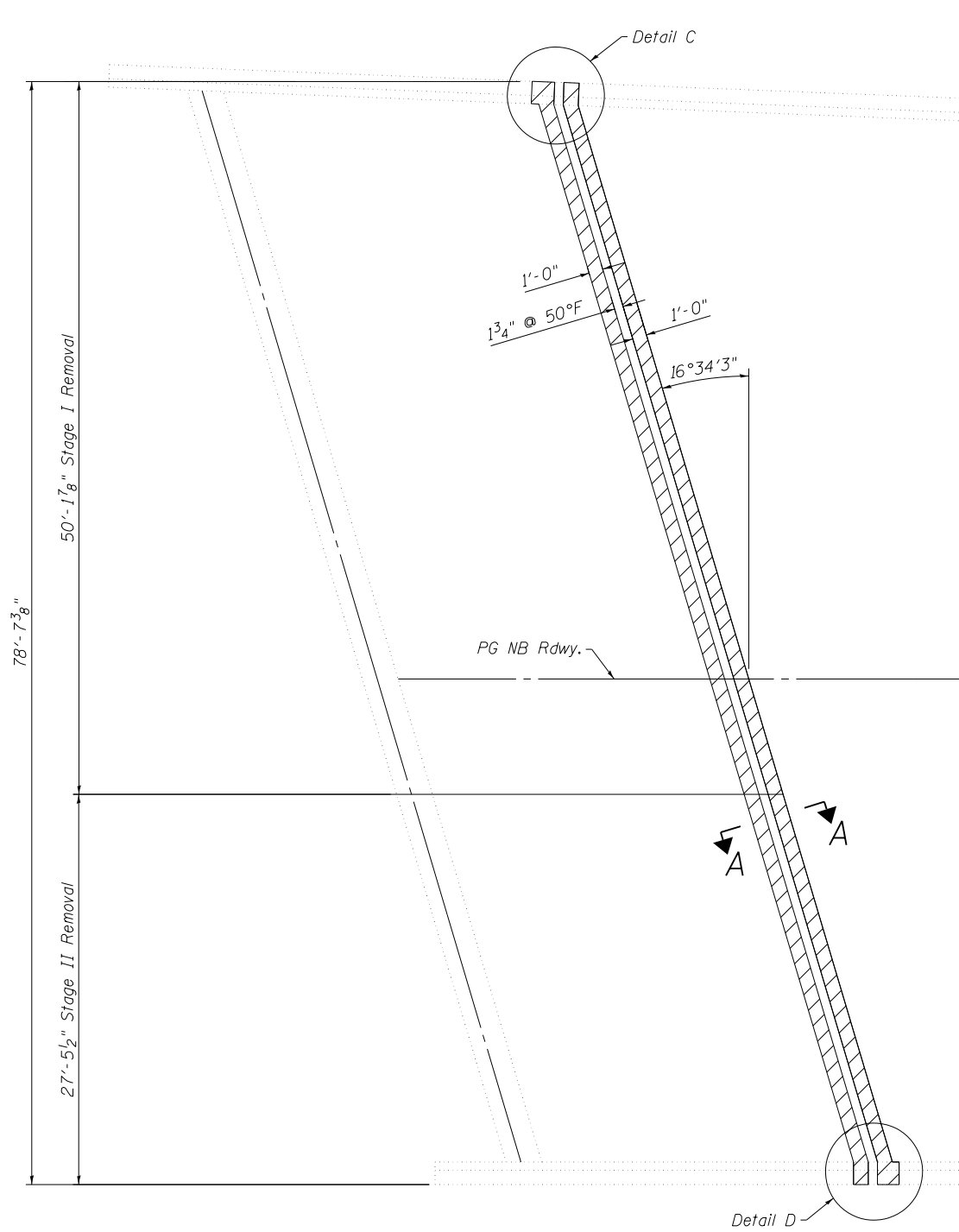


8/24/2012 10:09:40 PM G:\CHIN\0013\Bridges\CADD\060-0238&0239\0600230-76A89-09\_S.Exp\_Joint\_RR.dgn



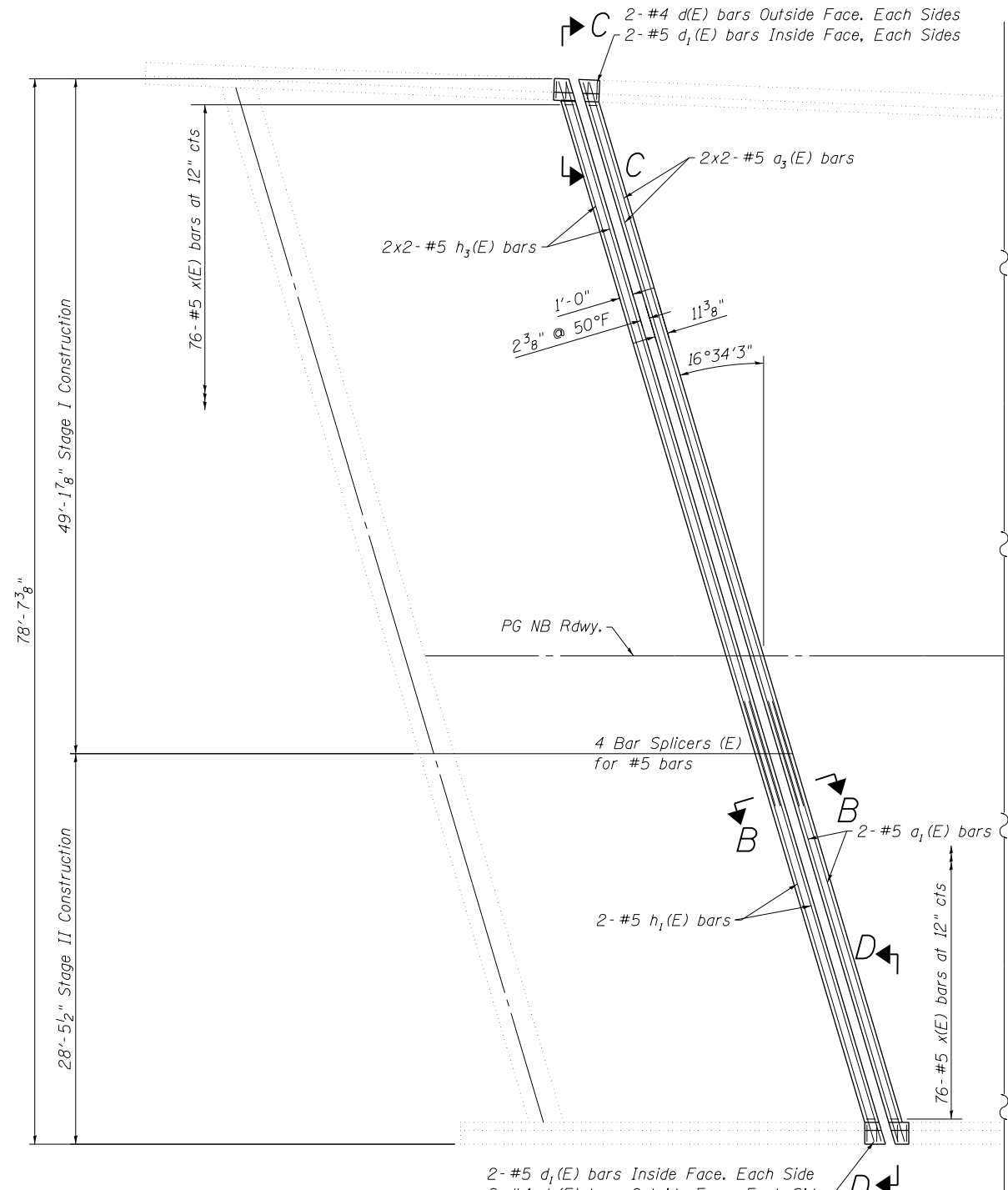
**CONCRETE REMOVAL**  
(SB South Abutment shown)

**NOTES:**

- Existing reinforcement extending into the removal area shall be cleaned, straightened and incorporated into the new construction. Any reinforcement bars that are damaged during concrete removal shall be replaced with an approved bar splicer or anchorage system. Cost shall be included with Concrete Removal.
- Trim existing reinforcement to accommodate proposed expansion joint.
- See sheet 10 or section A-A, B-B, C-C and D-D.
- Bars indicated thus: "4x2-#5 etc...", indicates 4 lines of bars with 2 lengths per line.

**MIN. LAP**

- #5 Bar 2'-7" Min. Lap.
- #6 Bar 3'-1" Min. Lap.

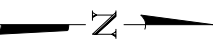
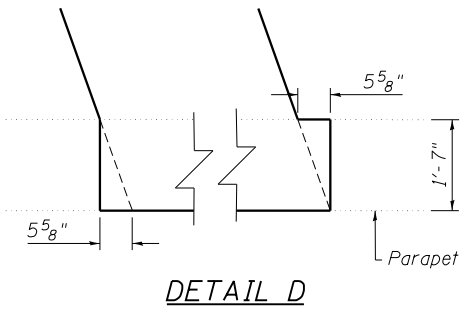
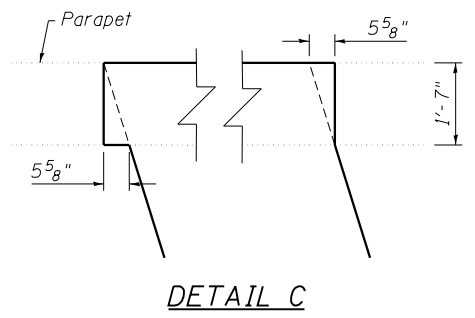


**CONCRETE REPLACEMENT**  
(SB South Abutment shown)

**BILL OF MATERIAL**

Item	Unit	Total
Concrete Removal	Cu. Yd.	3.7
Concrete Superstructure	Cu. Yd.	4.3
Protective Coat	Sq. Yd.	10

**LEGEND**



FILE NAME = 0600230-76A89-09\_S.Exp\_Joint\_RR.dgn



USER NAME = DMGloias	DESIGNED - WAE	REVISED -
PLOT SCALE = 1/16" = 1' / in.	CHECKED - FAS	REVISED -
PLOT DATE = 8/24/2012	DRAWN - DMG	REVISED -
	CHECKED - SLZ	REVISED -

**STATE OF ILLINOIS**  
**DEPARTMENT OF TRANSPORTATION**

**SOUTH ABUTMENT JOINT CONCRETE**  
**REMOVAL AND REPLACEMENT SOUTHBOUND**  
**STRUCTURE NO. 060-0239**  
SHEET NO. 9 OF 15 SHEETS

F.A.I. RTE. 255	SECTION 60-(7,8) RS-2	COUNTY MADISON	TOTAL SHEETS 261	SHEET NO. 204
				CONTRACT NO. 76A89

ILLINOIS FED. AID PROJECT