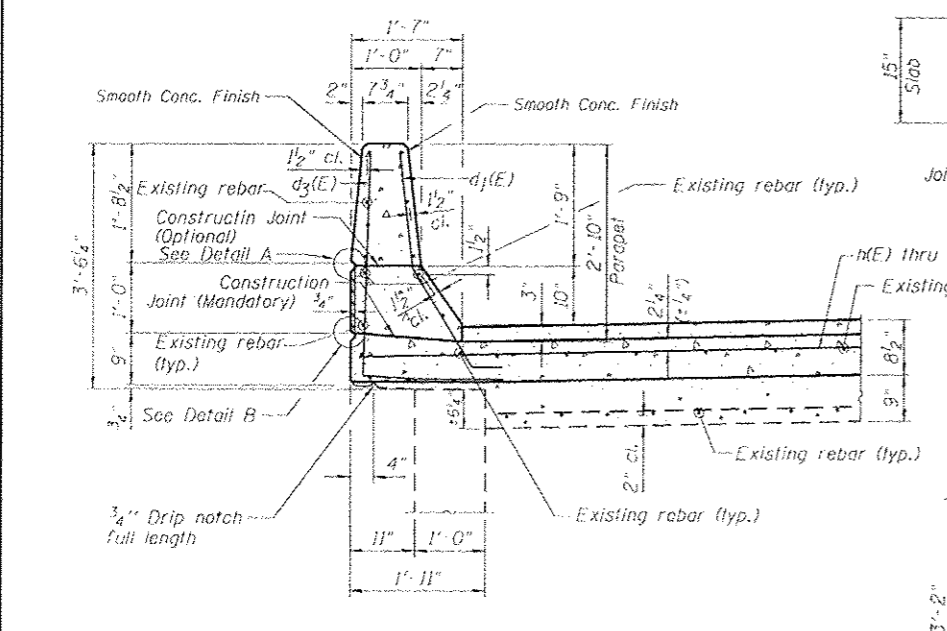


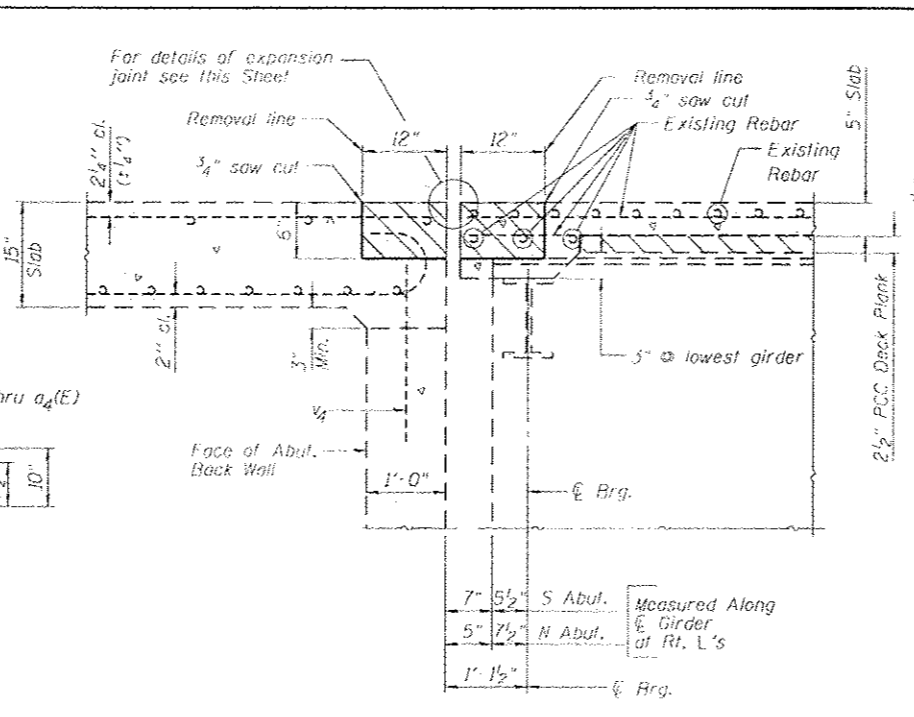
SECTION D-D

SECTION THRU PARAPET

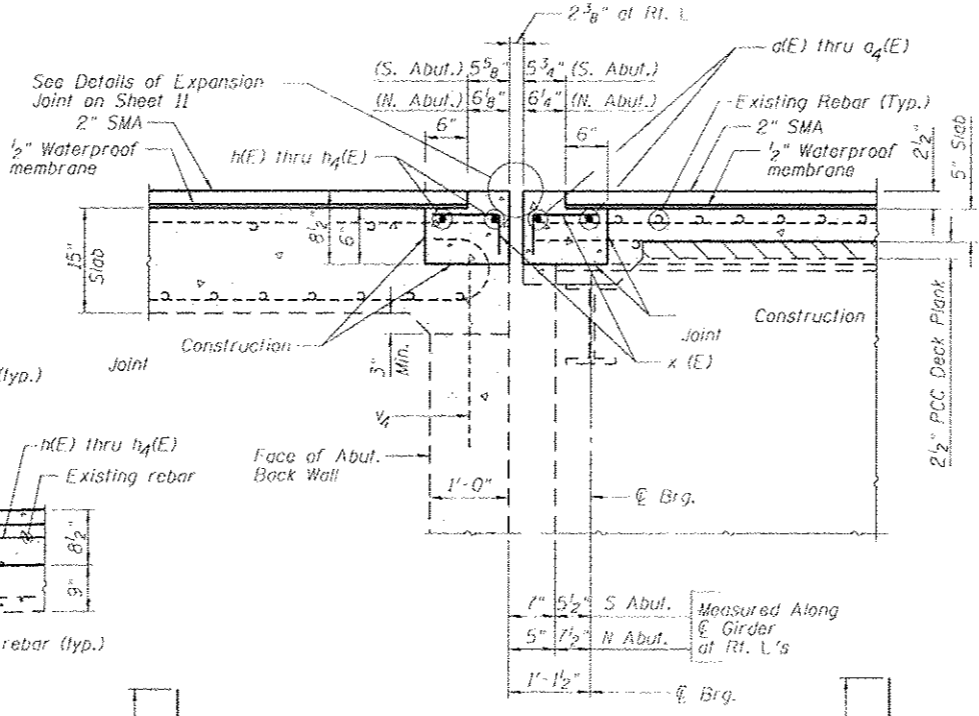


SECTION C-C

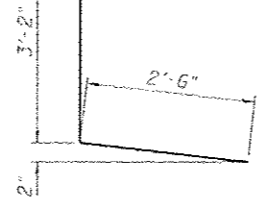
SECTION THRU PARAPET



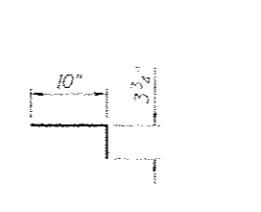
SECTION A-A



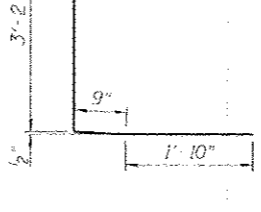
SECTION B-B



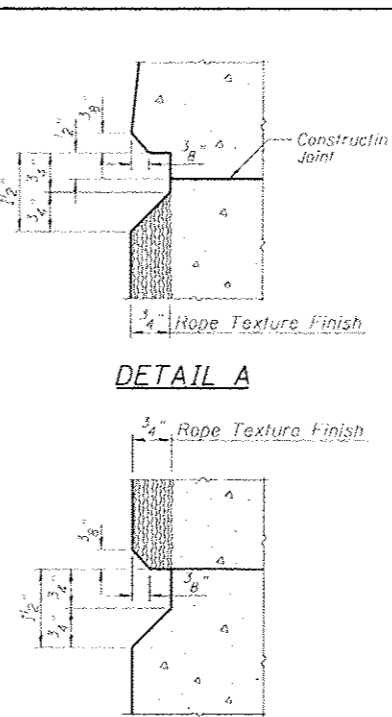
BAR d (E)



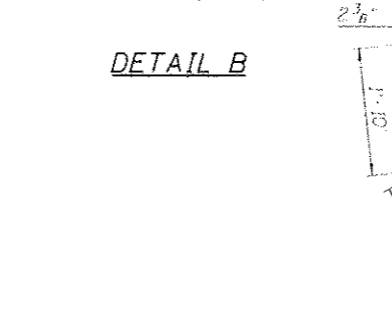
BAR x (E)



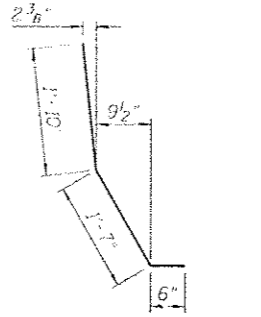
BAR d3 (E)



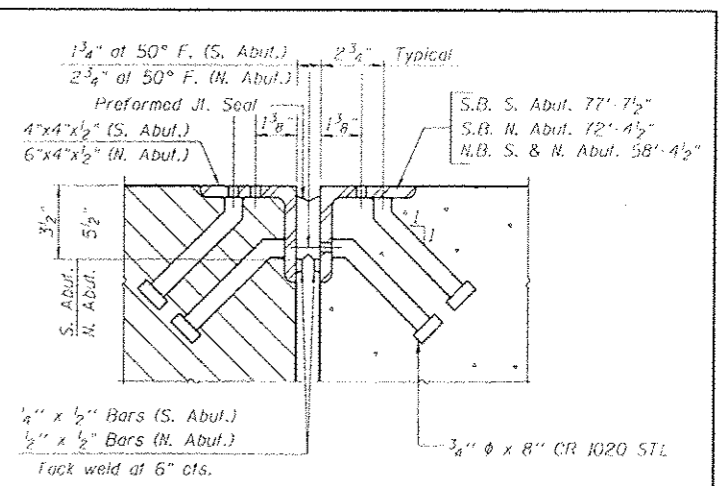
DETAIL A



DETAIL B



BAR d1 (E)



EXISTING EXPANSION JOINT CROSS SECTION

BRIDGE 0238 (NB)
North and South Joint
BILL OF MATERIAL

Bar	No.	Size	Length	Shape
d(E)	4	#5	31'-0"	—
a1(E)	4	#5	29'-2"	—
d(E)	8	#4	5'-8"	L
d1(E)	16	#5	3'-11"	L
d3(E)	8	#4	5'-9"	L
h(E)	4	#5	31'-0"	—
h1(E)	4	#5	29'-2"	—
x(E)	228	#5	1'-2"	—
Item	Unit	Quantity		
Reinforcement Bars, Epoxy Coated	Pound	1180		
Bar Splicers	Each	8		

BRIDGE 0239 (SB)
North Joint
BILL OF MATERIAL

Bar	No.	Size	Length	Shape
a1(E)	2	#5	29'-2"	—
a3(E)	4	#5	23'-9"	—
d(E)	4	#4	5'-8"	L
d1(E)	8	#5	3'-11"	L
d3(E)	4	#4	5'-9"	L
h1(E)	2	#5	29'-2"	—
h3(E)	4	#5	23'-9"	—
x(E)	152	#5	1'-2"	—
Item	Unit	Quantity		
Reinforcement Bars, Epoxy Coated	Pound	1000		
Bar Splicers	Each	4		

BRIDGE 0239 (SB)
South Joint
BILL OF MATERIAL

Bar	No.	Size	Length	Shape
a1(E)	2	#5	29'-2"	—
a3(E)	4	#5	26'-5"	—
d(E)	4	#4	5'-8"	L
d1(E)	8	#5	3'-11"	L
d3(E)	4	#4	5'-9"	L
h1(E)	2	#5	29'-2"	—
h3(E)	4	#5	26'-5"	—
x(E)	140	#5	1'-2"	—
Item	Unit	Quantity		
Reinforcement Bars, Epoxy Coated	Pound	1110		
Bar Splicers	Each	4		

B-24-2202 0008-01EM - 0A.CH1103.1387.C001A.C010.D050-0238&0239-Deck Joint-Details.dwg

FILE NAME: 060238-076A09-18-Deck Joint-Details.dwg



USER NAME	DESIGNED	REVISION
DMG/SLZ	WAE	-
	FAS	-
	DMG	-
	SLZ	-

STATE OF ILLINOIS
DEPARTMENT OF TRANSPORTATION

DECK JOINT DETAILS
STRUCTURE NO. 060-0238 & 060-0239
SHEET NO. 10 OF 15 SHEETS

F.A.I. RTE.	SECTION	COUNTY	TOTAL SHEETS	SHEET NO.
255	60-(7,8) RS-2	MADISON	261	205

CONTRACT NO. 76A89
ILLINOIS FED. AID PROJECT