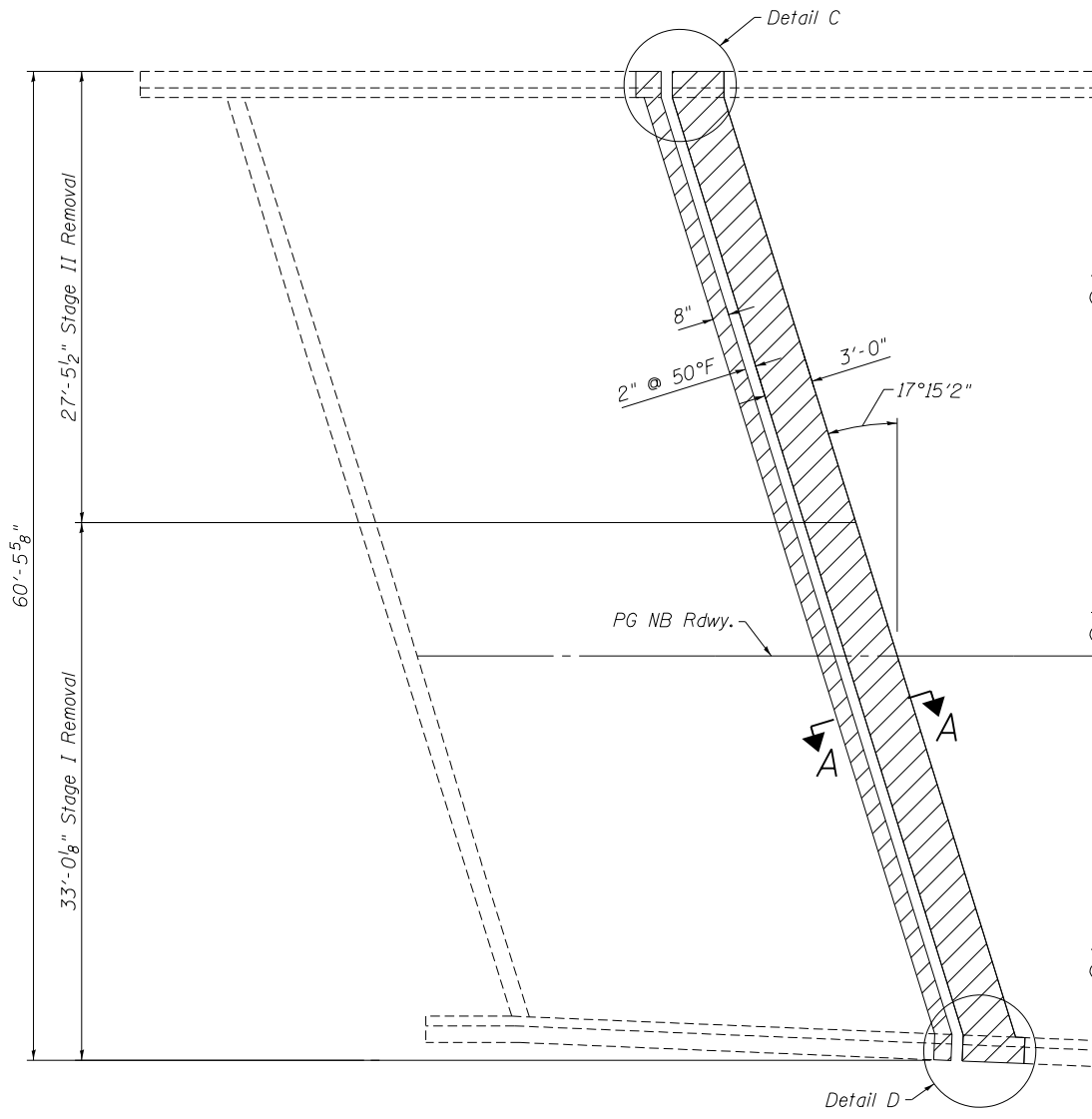
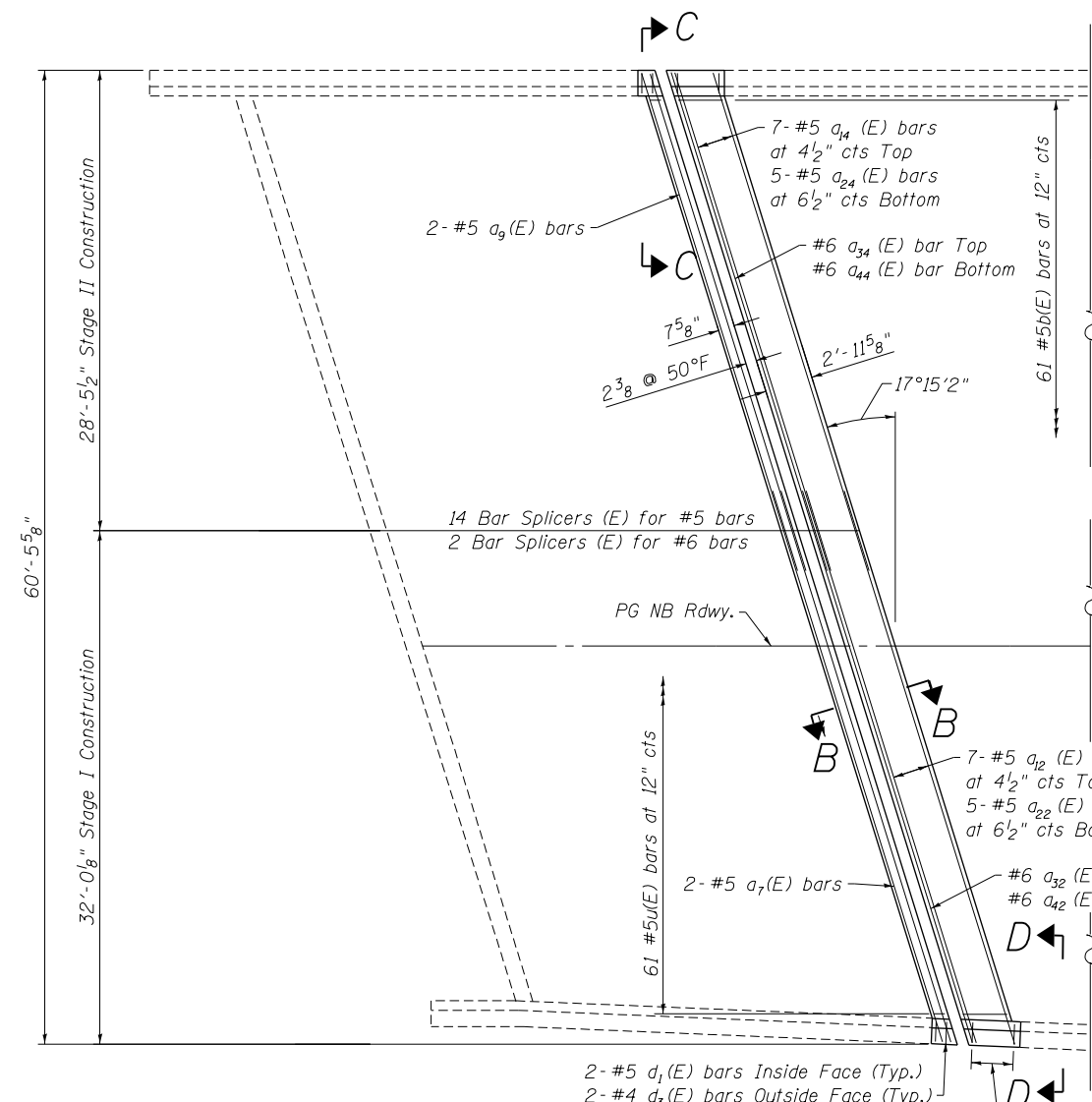


8/24/2012 10:06:24 PM G:\CHIN\013\Bridges\CADD\060-0206&0207\0600206-76A89-07-S.Abnt.Exp.-JT-R&R.dgn



**CONCRETE REMOVAL**  
(NB South Abutment Expansion Joint shown)

**MIN. LAP**  
 #5 Bar 2'-7" Min. Lap.  
 #6 Bar 3'-1" Min. Lap.



**CONCRETE REPLACEMENT**  
(NB South Abutment Expansion Joint shown)

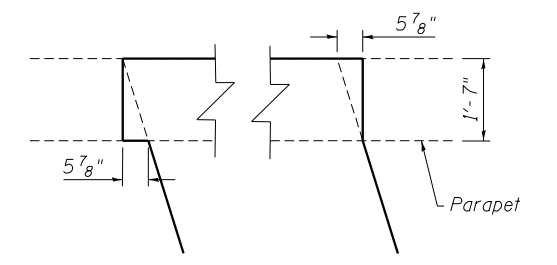
**NOTES:**

- Existing reinforcement extending into the removal area shall be cleaned, straightened and incorporated into the new construction. Any reinforcement bars that are damaged during concrete removal shall be replaced with an approved bar splicer or anchorage system. Cost shall be included with Concrete Removal.
- Trim existing reinforcement to accommodate proposed expansion joint.
- See sheet 8 for section A-A, B-B, C-C and D-D.
- Bars indicated thus: "4x2-#5 etc...", indicates 4 lines of bars with 2 lengths per line.

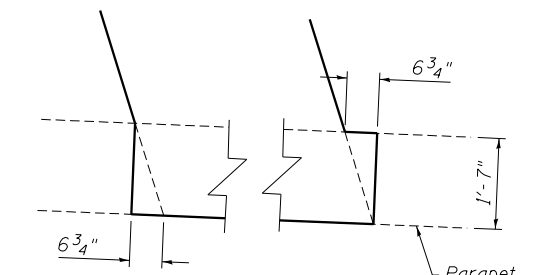
**BILL OF MATERIAL**

Item	Unit	Total
Concrete Removal	Cu. Yd.	6.6
Concrete Superstructure	Cu. Yd.	8.1
Protective Coat	Sq. Yd.	20

**LEGEND**



**DETAIL C**



**DETAIL D**

FILE NAME = 0600206-76A89-07-S.Abnt.Exp.-JT-R&R.dgn



USER NAME = DMGolas	DESIGNED - WAE	REVISED -
PLOT SCALE = 1/8" = 1'-0"	CHECKED - FAS	REVISED -
PLOT DATE = 8/24/2012	DRAWN - DMG	REVISED -
	CHECKED - SLZ	REVISED -

**STATE OF ILLINOIS**  
**DEPARTMENT OF TRANSPORTATION**

**SOUTH ABUTMENT EXPANSION JOINT CONCRETE**  
**REMOVAL AND REPLACEMENT N.B.**  
**STRUCTURE NO. 060-0206**

F.A.I. RTE. 255	SECTION 60-(7,8) RS-2	COUNTY MADISON	TOTAL SHEETS 261	SHEET NO. 217
CONTRACT NO. 76A89				ILLINOIS FED. AID PROJECT

SHEET NO. 7 OF 17 SHEETS