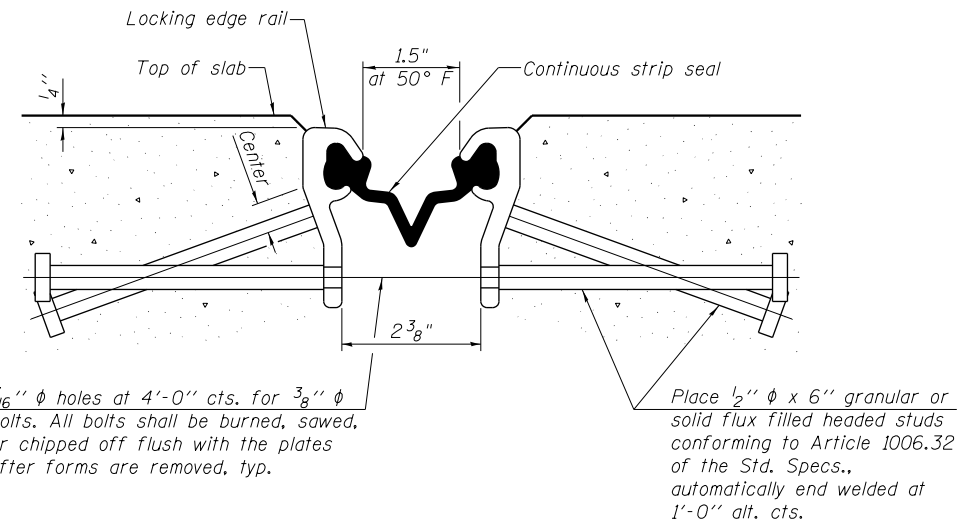
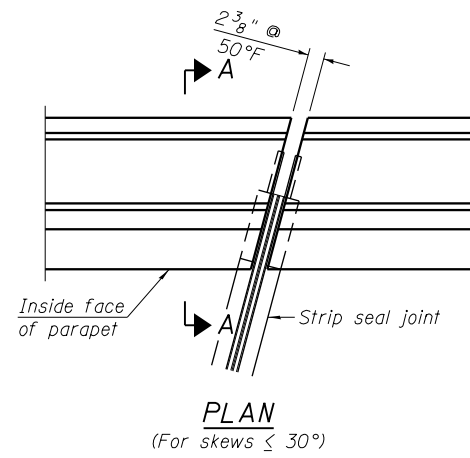
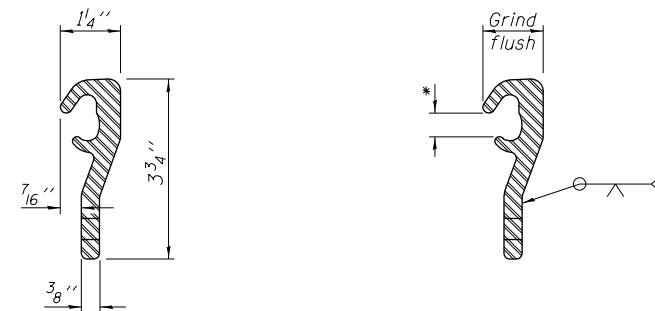
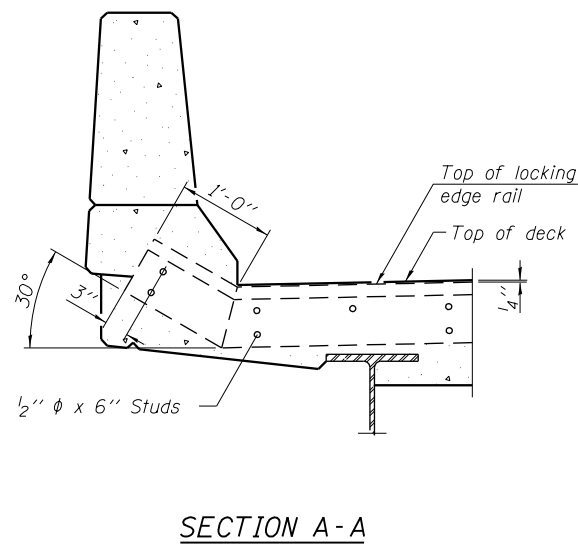


\*Omit weld at seal opening.  
 \*\*When joint is fixed, dimension is set at 1 1/2".



**SECTION THRU STRIP SEAL JOINT FOR OVERLAY OVER DECK BEAMS**



**LOCKING EDGE RAIL**

**LOCKING EDGE RAIL SPLICE**

**Notes:**  
 The strip seal shall be made continuous and shall have a minimum thickness of 1/4". The configuration of the strip seal shall match the configuration of the Locking Edge Rails.  
 The height and thickness of the Locking Edge Rails shown are minimum dimensions. The actual configuration of the Locking Edge Rails and matching strip seal may vary from manufacturer to manufacturer. Flanged edge rails will not be allowed.  
 The inside of the Locking Edge Rail groove shall be free of weld residue.  
 Locking Edge Rails may be spliced at slope discontinuities and stage construction joints.  
 The manufacturer's recommended installation methods shall be followed.  
 All steel components shall be galvanized after fabrication according to Article 520.03 of the Standard Specifications.

**BILL OF MATERIAL**

Item	Unit	Total
Preformed Joint Strip Seal	Foot	263.2

8/24/2012 10:06:30 PM G:\CHIN\0013\Bridges\CADD\060-0206&0207\0600206-76A89-13-Strip\_Seal\_Joint.dgn

FILE NAME = 0600206-76A89-13-Strip\_Seal\_Joint.dgn

**TranSystems**

USER NAME = DMGolas	X	DESIGNED - WAE	REVISED -
	X	CHECKED - FAS	REVISED -
PLOT SCALE = 0:2.0000 '1' / in.	X	DRAWN - DMG	REVISED -
PLOT DATE = 8/24/2012	X	CHECKED - SLZ	REVISED -

**STATE OF ILLINOIS  
 DEPARTMENT OF TRANSPORTATION**

**SHALLOW STRIP SEAL JOINT  
 STRUCTURE NO. 060-0206 AND 060-0207**

SHEET NO. 13 OF 17 SHEETS

F.A.I. RTE.	SECTION	COUNTY	TOTAL SHEETS	SHEET NO.
255	60-(7,8) RS-2	MADISON	261	223
			CONTRACT NO. 76A89	
ILLINOIS FED. AID PROJECT				