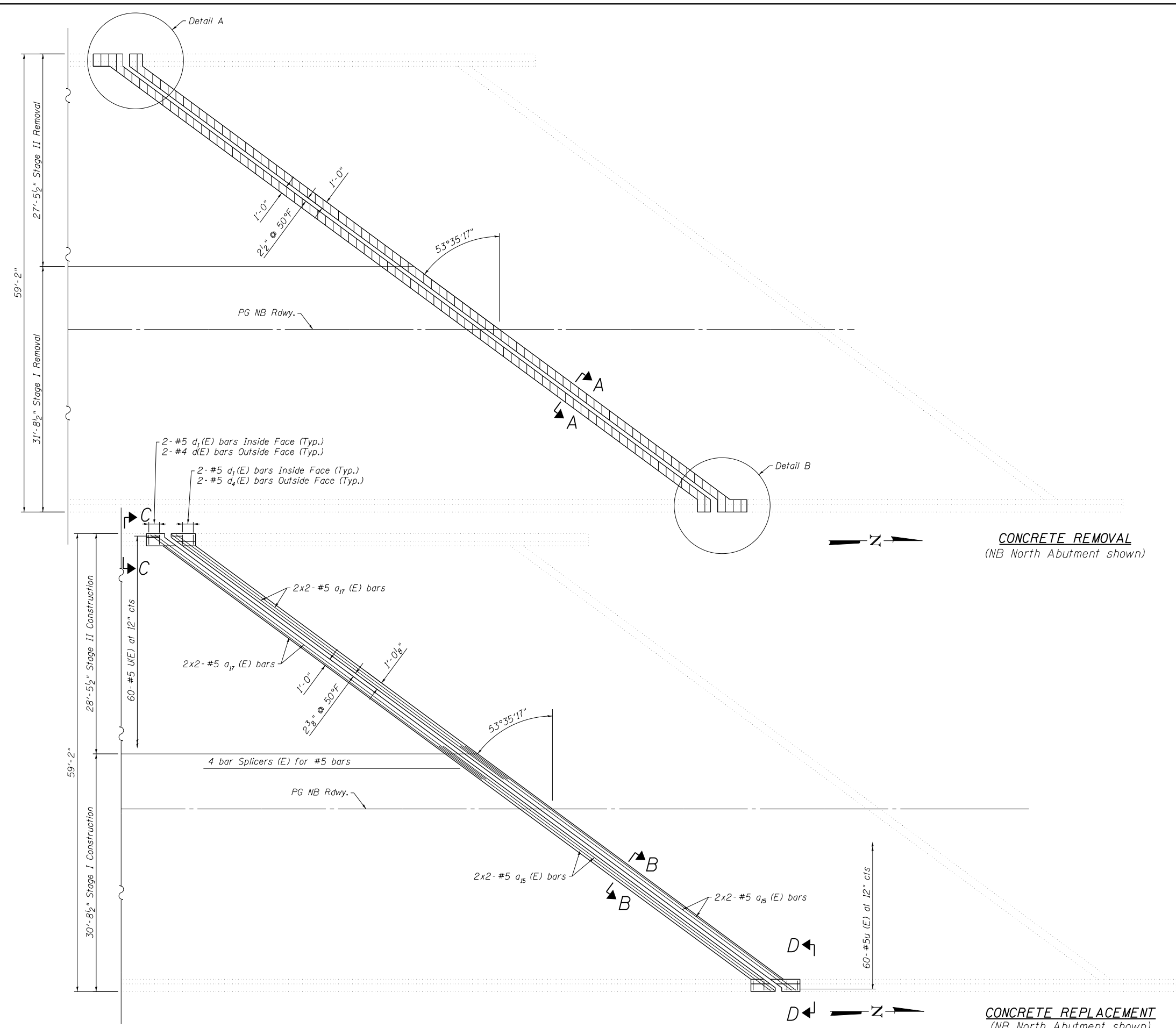


8/24/2012 10:07:24 PM G:\CHIN\013\Bridges\CADD\060-0214\0253\0600214-76A89-07-N.Abut.Exp.Joint\_NB.dgn

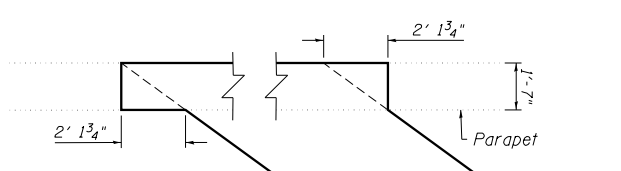


- NOTES:**
- Existing reinforcement extending into the removal area shall be cleaned, straightened and incorporated into the new construction. Any reinforcement bars that are damaged during concrete removal shall be replaced with an approved bar splicer or anchorage system. Cost shall be included with Concrete Removal.
  - Trim existing reinforcement to accommodate proposed expansion joint.
  - See sheet 11 for section A-A, B-B, C-C and D-D.
  - Bars indicated thus: "4x2-#5 etc...", indicates 4 lines of bars with 2 lengths per line.

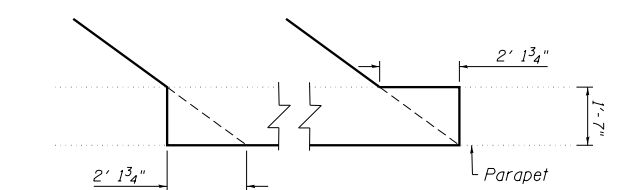
**MIN. LAP**  
 #5 Bar 2'-7" Min. Lap.  
 #6 Bar 3'-1" Min. Lap.

**BILL OF MATERIAL**

Item	Unit	Total
Concrete Removal	Cu. Yd.	4.8
Concrete Superstructure	Cu. Yd.	5.6
Protective Coat	Sq. Yd.	10



**DETAIL A**



**DETAIL B**

**LEGEND**

Concrete Removal

FILE NAME = 0600214-76A89-07-N.Abut.Exp.Joint\_NB.dgn



USER NAME = DMGloias	DESIGNED - WAE	REVISED -
PLOT SCALE = 1/4" = 1' / in.	CHECKED - FAS	REVISED -
PLOT DATE = 8/24/2012	DRAWN - DMG	REVISED -
	CHECKED - SLZ	REVISED -

**STATE OF ILLINOIS  
 DEPARTMENT OF TRANSPORTATION**

**NORTH ABUTMENT EXPANSION JOINT CONCRETE  
 STRUCTURE NO. 060-0214**

SHEET NO. 7 OF 16 SHEETS

F.A.I. RTE. = 255	SECTION = 60-(7,8) RS-2	COUNTY = MADISON	TOTAL SHEETS = 261	SHEET NO. = 234
CONTRACT NO. 76A89			ILLINOIS FED. AID PROJECT	