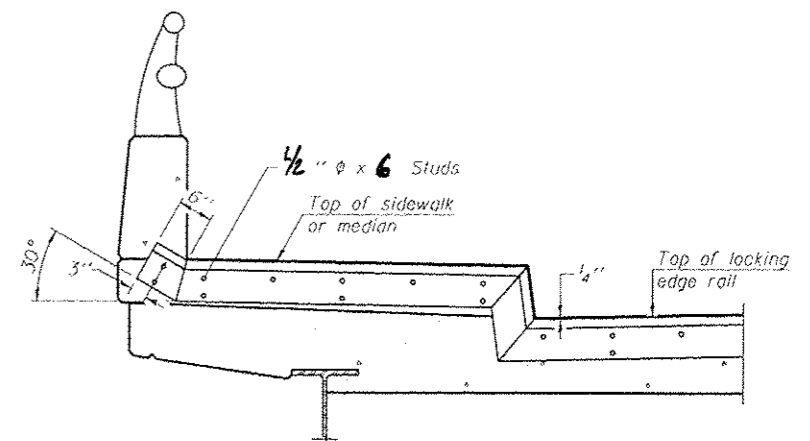
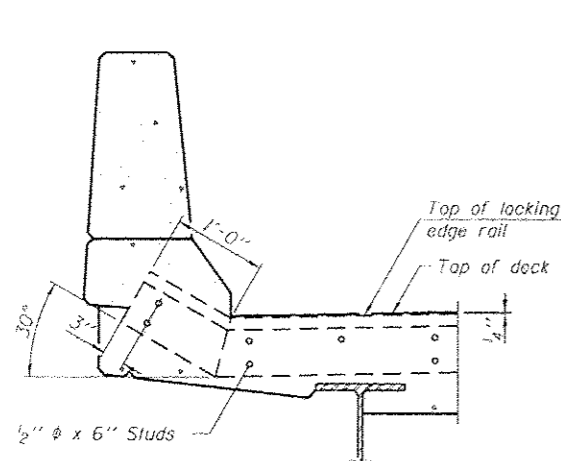


SECTION C-C

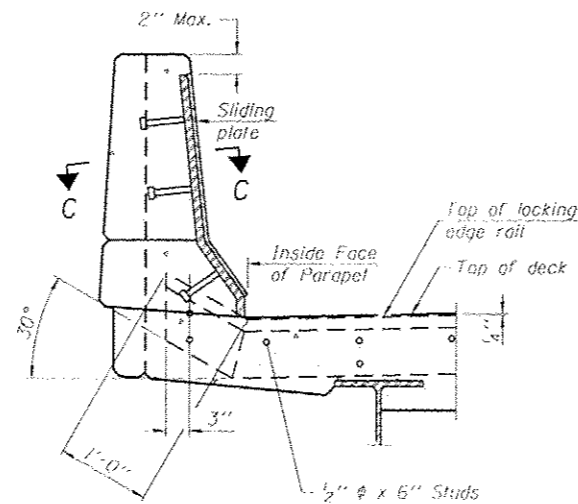


TYPICAL END TREATMENT AT SIDEWALK OR MEDIAN

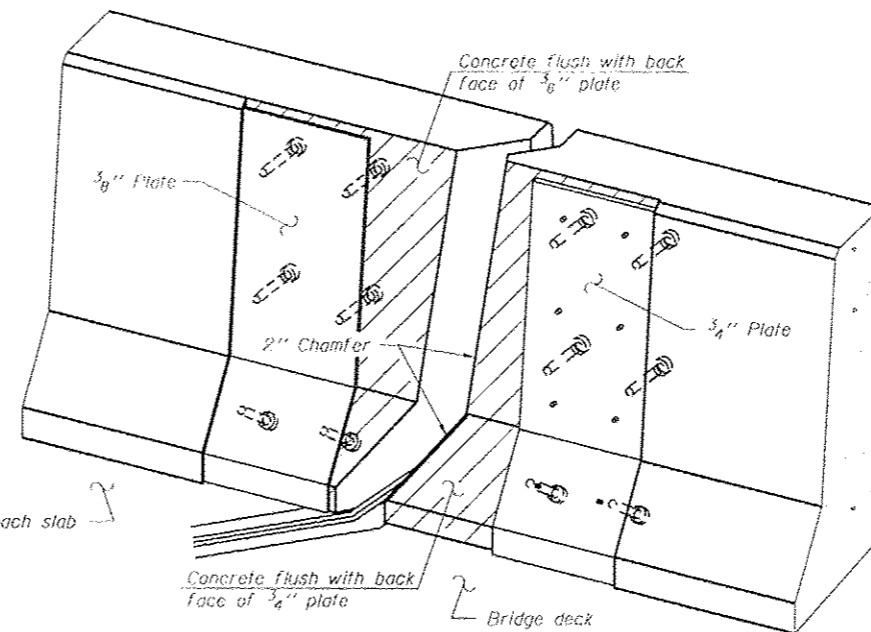
Shorter plates with a single row of studs at 12" cts. may be necessary on medians which are shallower than 9". See manufacturer's recommendation.



SECTION A-A

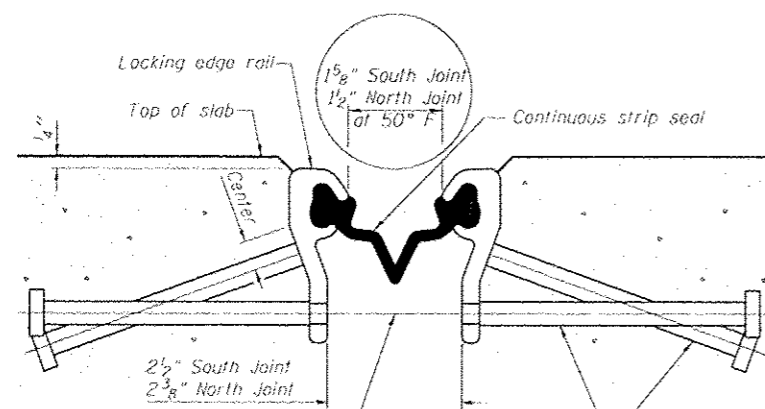


SECTION B-B



TRIMETRIC VIEW (Showing back plates only)

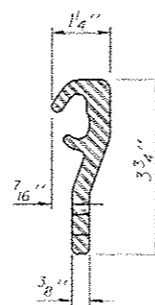
*Omit weld at seal opening.
**When joint is fixed, dimension is set at 1 1/2".



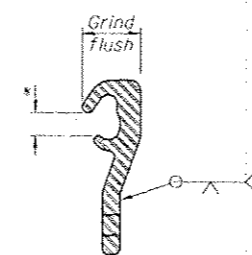
SECTION THRU STRIP SEAL JOINT FOR OVERLAY OVER DECK BEAMS

7/16" ϕ holes at 4'-0" cts. for 3/8" ϕ bolts. All bolts shall be burned, sawed, or clipped off flush with the plates after forms are removed, typ.

Place 1/2" ϕ x 6" granular or solid flux filled headed studs conforming to Article 1006.32 of the Std. Specs., automatically end welded at 1'-0" alt. cts.



LOCKING EDGE RAIL



LOCKING EDGE RAIL SPLICE

Notes:

All steel components shall be galvanized after fabrication according to Article 520.03 of the Standard Specifications.
Parapet plates and anchorage studs for skews > 30° included in the cost of Preformed Joint Strip Seal.
The strip seal shall be made continuous and shall have a minimum thickness of 1/4". The configuration of the strip seal shall match the configuration of the Locking Edge Rails.
The height and thickness of the Locking Edge Rails shown are minimum dimensions. The actual configuration of the Locking Edge Rails and matching strip seal may vary from manufacturer to manufacturer. Flanged edge rails will not be allowed.
The inside of the Locking Edge Rail groove shall be free of weld residue.
Locking Edge Rails may be spliced at slope discontinuities and stage construction joints.
The manufacturer's recommended installation methods shall be followed.

BILL OF MATERIAL

Item	Unit	Total
Preformed Joint Strip Seal	Foot	325.8

8/24/2012 10:07:23 PM - G:\CHANG\013\B7\SSB\24030\060-02-460253\0602024\0253-76A89-13-Strip_Seal_Joint.dgn

USER NAME : DMGslz



USER NAME	DESIGNED	CHECKED	DRAWN	PLLOT DATE
DMGslz	WAE	FAS	DMG	8/21/2012

STATE OF ILLINOIS
DEPARTMENT OF TRANSPORTATION

SHALLOW JOINT STRIP SEAL DETAILS
STRUCTURE NO. 060-0214 AND 060-0253

SHEET NO. 13 OF 16 SHEETS

F.A.I. RTE.	SECTION	COUNTY	TOTAL SHEETS	SHEET NO.
255	60-(7,8) RS-2	MADISON	261	240

ILLINOIS FED. AID PROJECT

CONTRACT NO. 76A89