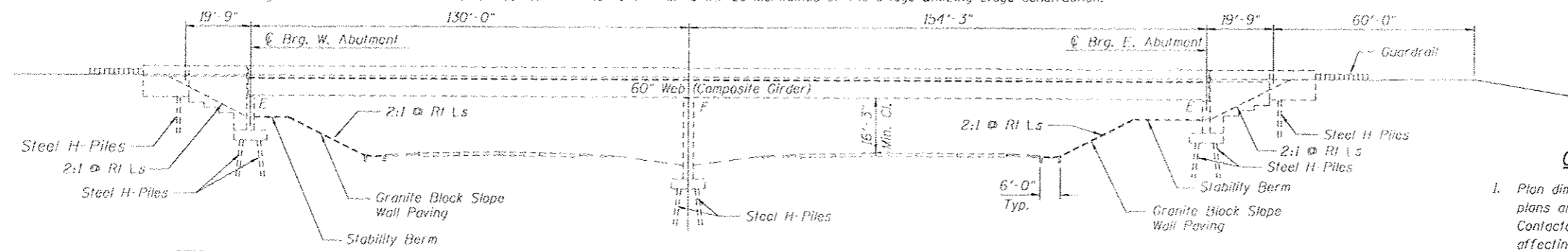


Bench Mark: B.M. "A" R.R. Spike in P.P. at Sta. 1334+00 - 730' L.L., Elev. 422.22

Existing Structure: The original structure was constructed in 1986 as FAI Route 255, Section 60-BMB.

The bridge superstructure consists of a continuous two span composite welded plate girder bridge with a 7 1/2" deck. The substructures consist of sand filled vaulted abutments and a concrete pier all supported on steel piles. The abutment slabs are 12" thick. The back-to-back of abutment dimension is 324'-9" with an out-to-out deck dimension of 33'-2". The span lengths (Cl bearing to Cl bearing) are 130'-0" and 154'-3". The bridge has a left forward skew of 2°-13'-15". Two lanes of traffic will be maintained on the bridge utilizing stage construction.



**ELEVATION**

**GENERAL NOTES**

1. Plan dimensions, elevations and details relative to existing plans are subject to nominal construction variations. The Contractor shall field verify existing dimensions and details affecting new construction and make necessary approved adjustments prior to construction or ordering of materials. Such variations shall not be cause for additional compensation for a change in scope of the work, however, the Contractor will be paid for the quantity actually furnished at the unit price bid for the work.

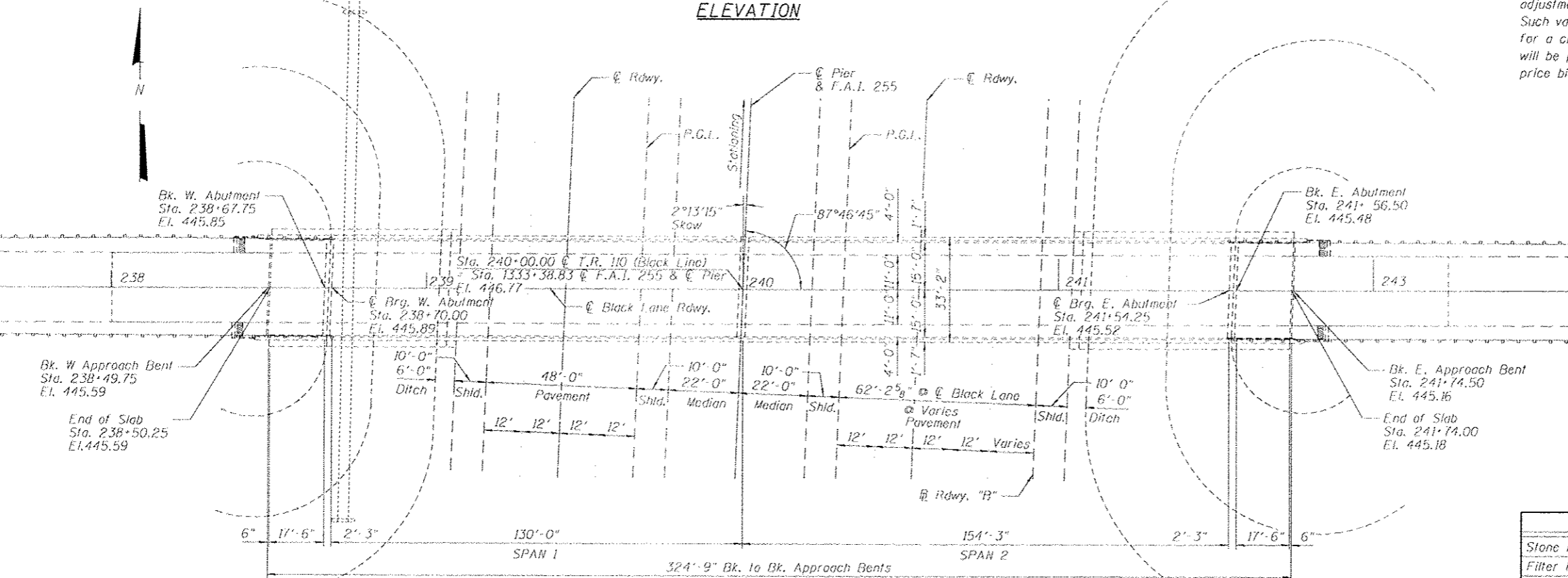
Apply Concrete sealer per Article 587 of the Standard Specifications to the bridge deck, top and inside vertical faces of the parapets, and posts, and wing walls.

**INDEX OF SHEETS**

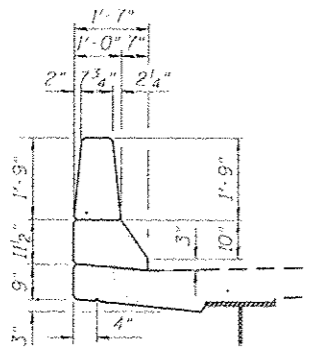
1. General Plan and Elevation
2. Stopwall repairs East Abutment
3. Stopwall repairs West Abutment
4. Seismic Bumpers

**TOTAL BILL OF MATERIAL**

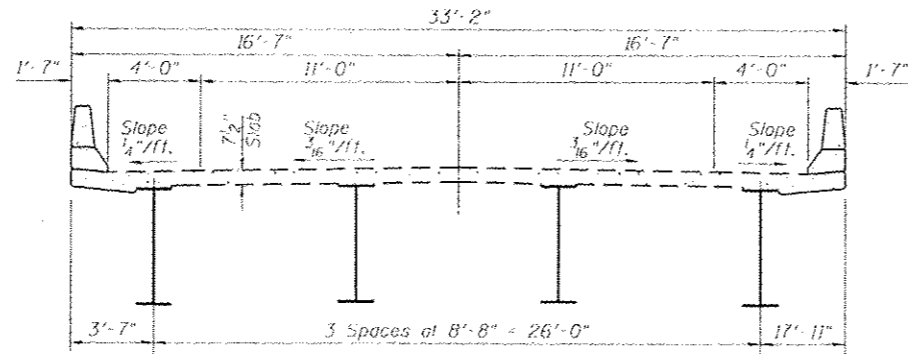
ITEM	UNIT	TOTAL
Stone Riprap, Class A3	Ton	5
Filter Fabric	Sq Yd	6
Controlled low strength material	Cu Yd	15
Concrete Sealer	Sq Ft	12,157
Granite Block replacement	Sq Ft	98
Furnish & Erect Structural Steel	Pound	450



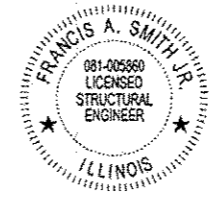
**PLAN**



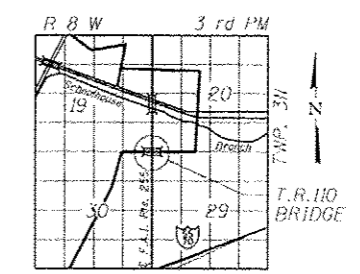
**PARAPET DETAIL**



**CROSS SECTION**



DATE: 03/09/2012  
 F. ALLEN SMITH, P.E., S.E.  
 NO. 081-005860  
 EXP. DATE 11/30/2012



**LOCATION SKETCH**

FILE NAME: 0668215-76A89-01-GPE.dgn



USER NAME: sldgsm	DESIGNED: WAE	REVISED:
PLOT SCALE: 48.0" = 1" IN	CHECKED: FAS	REVISED:
PLOT DATE: 11/17/2012	DRAWN: DMG	REVISED:
	CHECKED: SLZ	REVISED:

STATE OF ILLINOIS  
 DEPARTMENT OF TRANSPORTATION

GENERAL PLAN AND ELEVATION  
 STRUCTURE NO. 060-0215

SHEET NO. 1 OF 4 SHEETS

F.A.I. RTE.	SECTION	COUNTY	TOTAL SHEETS	SHEET NO.
255	60-17.8) RS-2	MADISON	261	258

CONTRACT NO. 76A89  
 ILLINOISIFIED, AID PROJECT