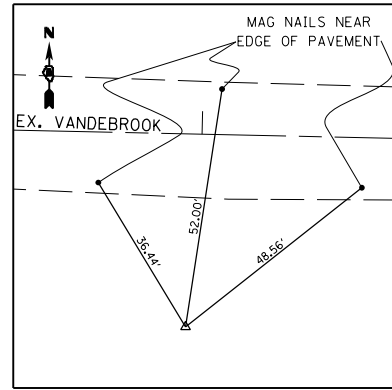
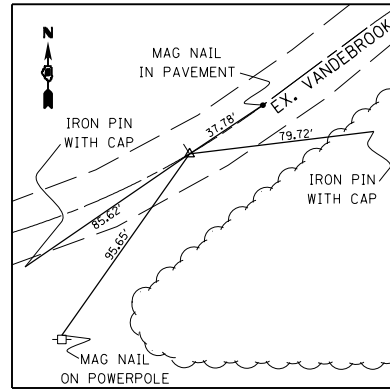


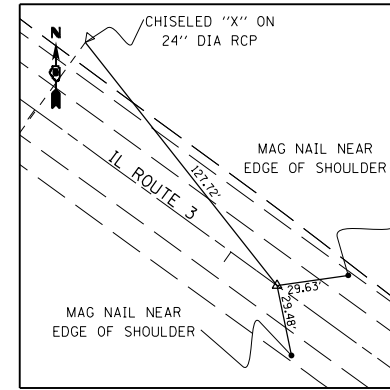
VANDEBROOK ACCESS RD.  
 P.O.T. STA. 95+03.29  
 MAG NAIL IN PAVEMENT  
 597,358.8250 N  
 2,301,452.6700 E



VANDEBROOK ACCESS RD.  
 END PROJECT STA. 92+45.00  
 IRON PIN  
 597,317.1150 N  
 2,301,452.7530 E



VANDEBROOK DRIVE  
 CENTER POINT OF CUL-DE-SAC  
 MAG NAIL IN PAVEMENT  
 597,398.0230 N  
 2,302,147.2490 E



IL ROUTE 3  
 END CONTRACT 1 / BEGIN CONTRACT 2  
 MAG NAIL IN PAVEMENT  
 600,857.1230 N  
 2,301,509.1150 E

LAST SAVED = 10/3/2012  
 PEN TABLE = 100,244,141  
 PLOT DRIVER = pdfnclayershp21ctcf9

FILE NAME =	USER NAME = jepettibone	DESIGNED -	REVISED -
I:\1001100\Phase II - 76FS\Cad\T\Plans\08_0876F51-sht-ATB-6.dgn		DRAWN -	REVISED -
	PLOT SCALE = 100.0000' / 1" =	CHECKED -	REVISED -
	PLOT DATE = 10/4/2012 5:10:31 PM	DATE -	REVISED -

STATE OF ILLINOIS  
 DEPARTMENT OF TRANSPORTATION

HORNER &  
 SHIRIN, INC.  
 ENGINEERS

ALIGNMENTS, TIES, AND BENCHMARKS

SCALE: NONE SHEET NO. 6 OF 6 SHEETS STA. TO STA.

F.A.U. RTE.	SECTION	COUNTY	TOTAL SHEETS	SHEET NO.
9324	68-R-1	MONROE	192	35
				CONTRACT NO. 76F51
ILLINOIS FED. AID PROJECT				