

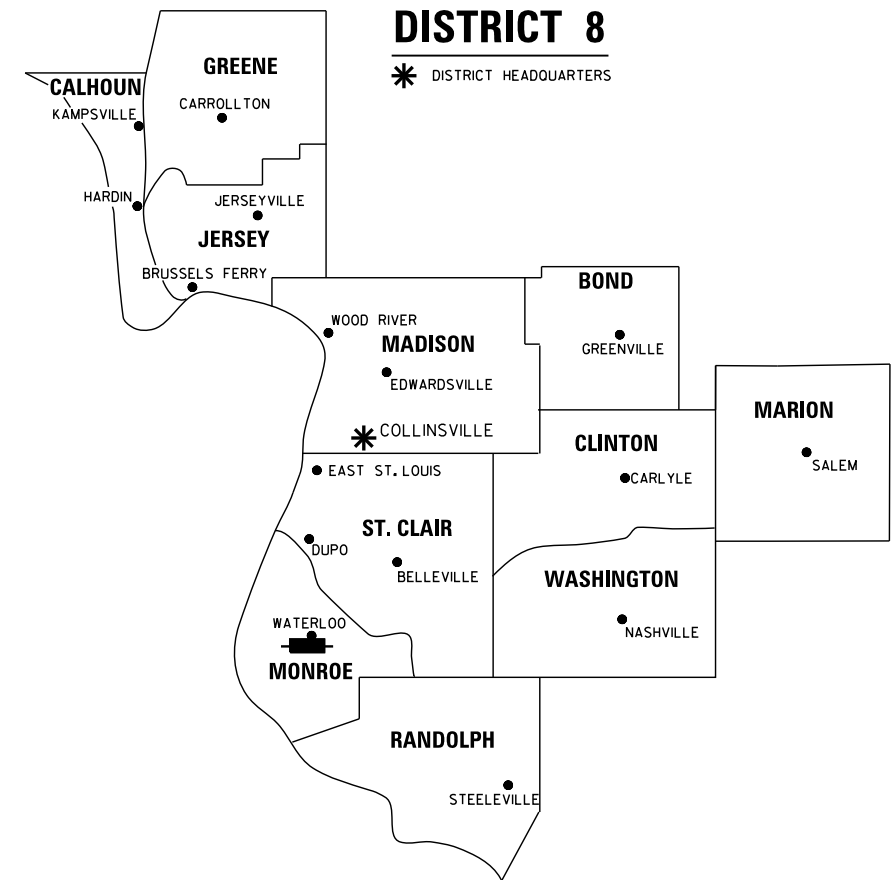
STATE OF ILLINOIS
DEPARTMENT OF TRANSPORTATION
DIVISION OF HIGHWAYS

PLAT OF HIGHWAYS

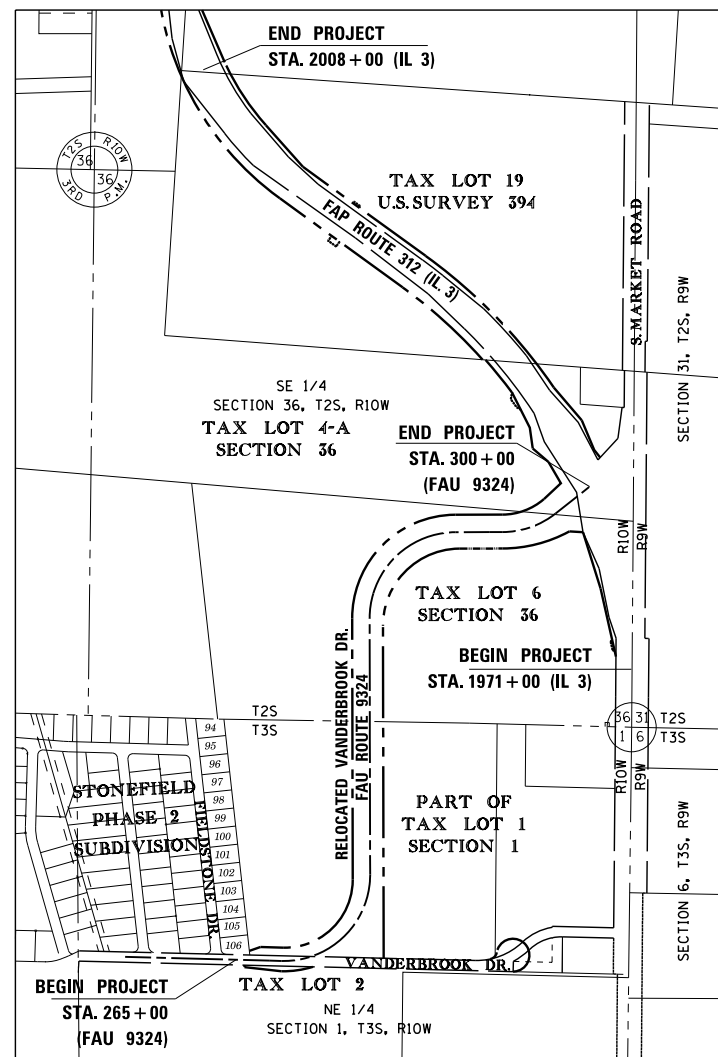
FAP ROUTE 312 (IL 3)
SECTION 68-WRS-1
FAU ROUTE 9324 (REL. VANDERBROOK DR.)
SECTION 68-R-1
MONROE COUNTY
JOB NO. R-98-007-04
T. 2 S.

SHEET INDEX		
SHEET NO.	STATION TO STATION	DESCRIPTION
1		COVER SHEET
2		LEGEND/NOTE SHEET
3	1978+00 TO 1988+00	PAR. 84070591E, 8407060, & 8407061
4	1968+00 TO 1978+00	PAR. 8407061A & EXISTING R.O.W.
5	1953+00 TO 1968+00	PAR. 8407014A, 8407011 & 8407015
6	281+00 TO 300+00	PAR. 8407061A
7	264+00 TO 281+00	PAR. 8407014 & 8407013
8	1978+00 TO 2008+00	PAR. 8407016 & 8407017
9		TOTAL HOLDINGS & SECTION DETAIL
10		TOTAL HOLDINGS & SECTION DETAIL
11		CONTROL TIES

SPACE RESERVED FOR RECORDING OFFICER



LOCATION OF SECTION INDICATED THUS:



PREPARED BY:

ASSOCIATED PROFESSIONALS, INC.

17625 Mockingbird Road, P.O. Box 311
Nashville, Illinois 62263
Ph. 618-478-9000 Fax 618-478-9001
web: www.apisurvey.com
IDPR Design Firm License No. 184-001303



5/24/2012

GARY S. MUELLER, IPLS # 3332
EXPIRATION DATE: 11-30-2012

T. 3 S.
PROJECT LENGTH (IL 3) = 3,700 LIN. FT. = 0.7007 MILES
PROJECT LENGTH (FAU 9324) = 3,500 LIN. FT. = 0.6629 MILES

SHEET 1 OF 12

ILLINOIS DEPARTMENT OF TRANSPORTATION DIVISION OF HIGHWAYS/REGION 5/DISTRICT 8 1102 EASTPORT PLAZA DRIVE COLLINSVILLE, ILLINOIS 62234-6198				
F.A.U. RTE.	SECTION	COUNTY	TOTAL SHEETS	SHEET NO.
9324	68-R-1	MONROE	192	36
			CONTRACT NO. 76F51	
FED. ROAD DIST. NO. 8 [ILLINOIS] FED. AID PROJECT				