

MAINTENANCE OF TRAFFIC STAGE 1

SEQUENCE OF CONSTRUCTION

1. CONSTRUCT SHADED PORTION OF ROADWAY
2. PLACE TEMPORARY RAMP AT EAST EDGE OF EXISTING WB LANE OF CONSTRUCTION.







TRAFFIC PLACEMENT

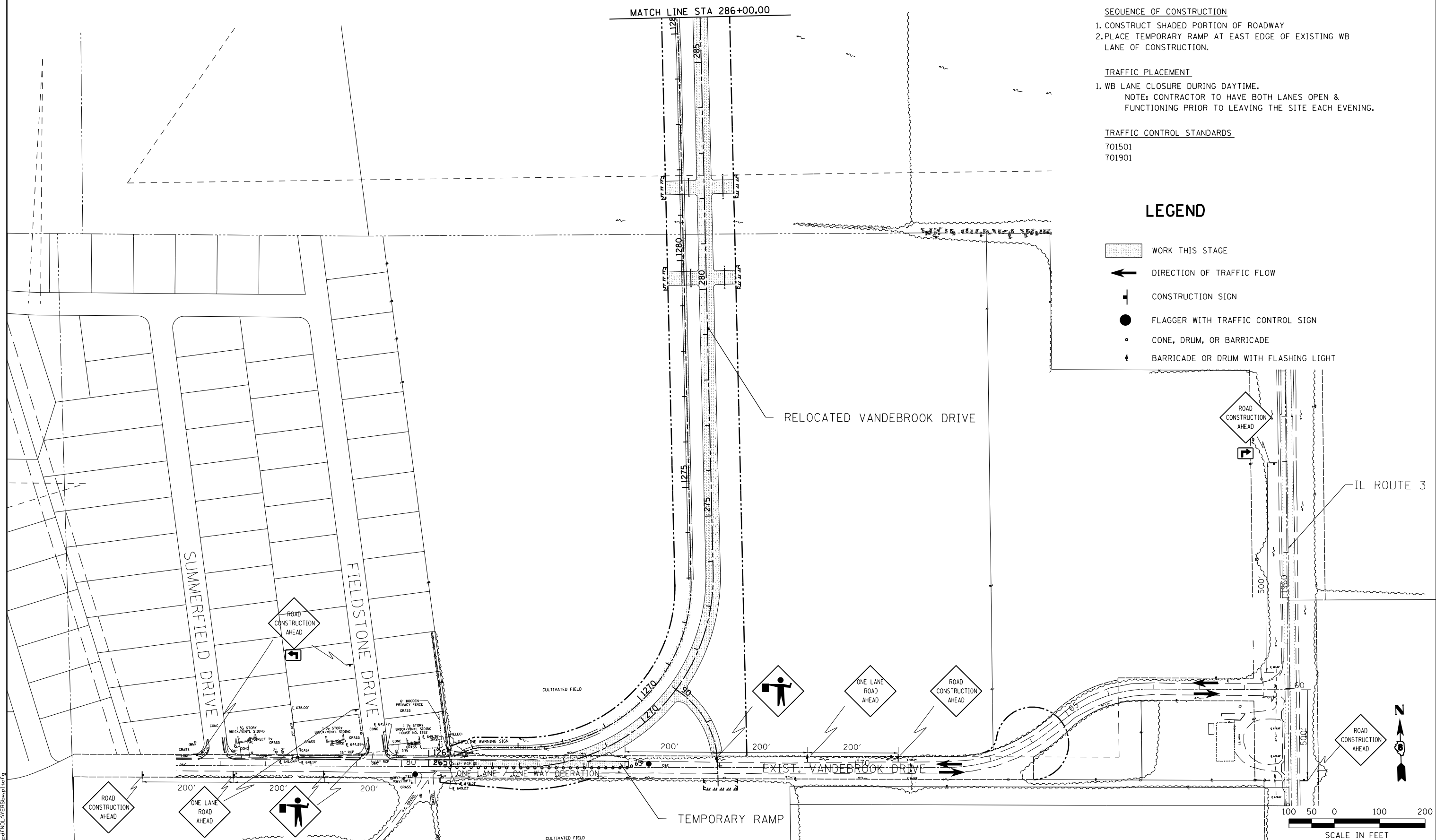
1. WB LANE CLOSURE DURING DAYTIME.
NOTE: CONTRACTOR TO HAVE BOTH LANES OPEN & FUNCTIONING PRIOR TO LEAVING THE SITE EACH EVENING.

TRAFFIC CONTROL STANDARDS

- 701501
- 701901

LEGEND

-  WORK THIS STAGE
-  DIRECTION OF TRAFFIC FLOW
-  CONSTRUCTION SIGN
-  FLAGGER WITH TRAFFIC CONTROL SIGN
-  CONE, DRUM, OR BARRICADE
-  BARRICADE OR DRUM WITH FLASHING LIGHT



LAST SAVED = 10/3/2012
 PEN TABLE = 100, 244, 141
 PLOT DRIVER = pdfplotlayers.pltcf9

FILE NAME =	USER NAME = jepettibone	DESIGNED -	REVISED -
I:\1001100\Phase II - 76FS\Cad\T\Plans\32_0876F51-sht-staging-02.dgn		DRAWN -	REVISED -
PLOT SCALE = 200.0000' / in.		CHECKED -	REVISED -
PLOT DATE = 10/4/2012 5:10:57 PM		DATE -	REVISED -

STATE OF ILLINOIS
DEPARTMENT OF TRANSPORTATION

HORNER & SHIRIN, INC.
ENGINEERS

SUGGESTED STAGES OF CONSTRUCTION AND TRAFFIC CONTROL
 STAGE 1
 SCALE: 1" = 100' SHEET NO. 2 OF 7 SHEETS STA. 265+37.54 TO STA. 286+00.00

F.A.U. RTE.	SECTION	COUNTY	TOTAL SHEETS	SHEET NO.
9324	68-R-1	MONROE	192	64
				CONTRACT NO. 76F51
ILLINOIS FED. AID PROJECT				