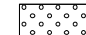
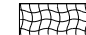
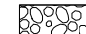

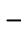


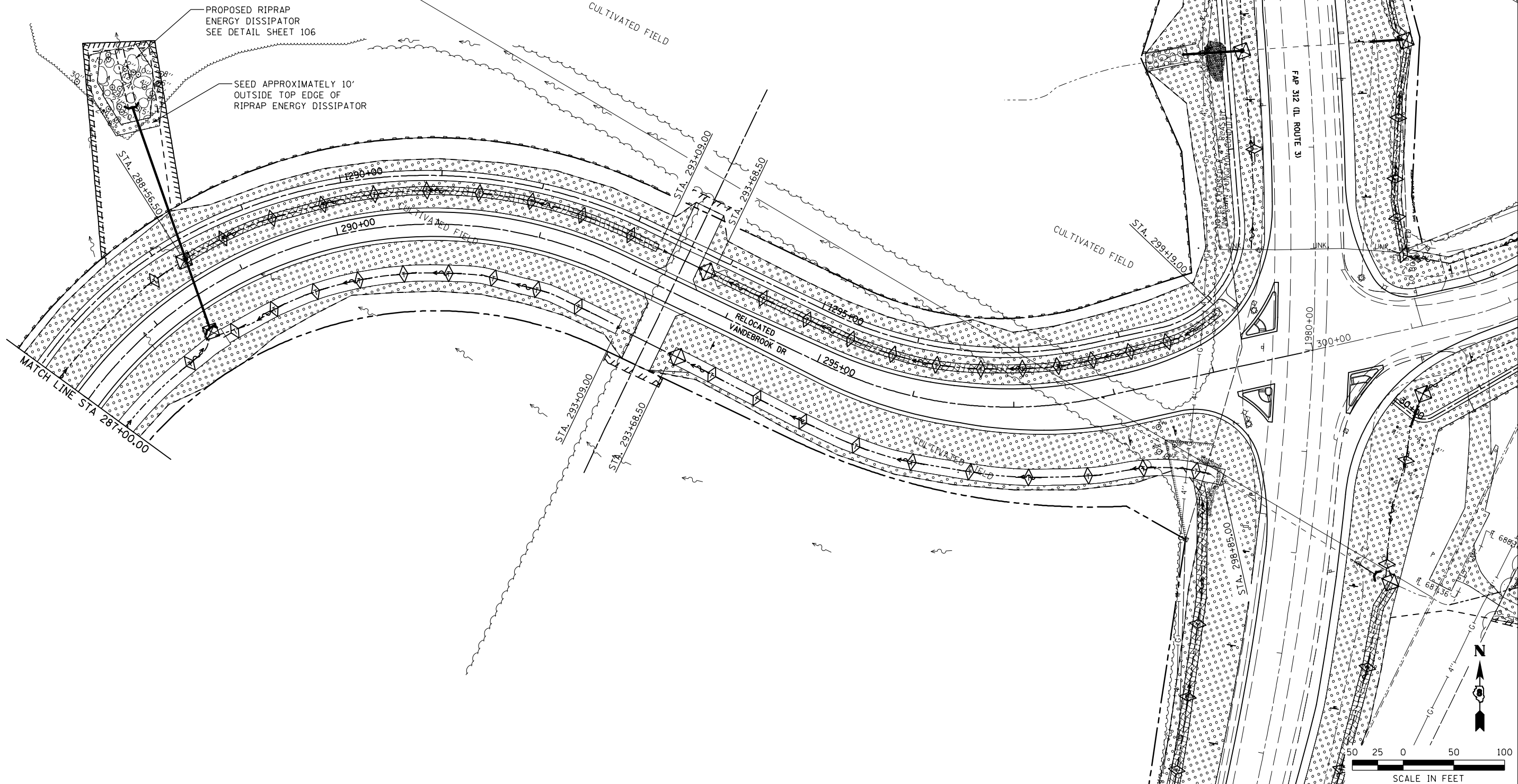


LEGEND

-  SEEDING, CLASS 2A AND TEMPORARY EROSION CONTROL SEEDING
-  EROSION CONTROL BLANKET
-  AGGREGATE DITCH
-  RIP RAP
-  TEMPORARY DITCH CHECK
-  INLET & PIPE PROTECTION
-  PERIMETER EROSION BARRIER



FILE NAME = F:\Projects\1DOT PROJECTS\09-101-11.4\Drawings\CADD Sheets\Contract 1\43.0876F51-sht	USER NAME = Richard Heinke	DESIGNED - JAH	REVISED -	STATE OF ILLINOIS DEPARTMENT OF TRANSPORTATION	 McDonough-Whillow, P.C. PROFESSIONAL DESIGN NO. 184-002754 SCALE: 1" = 50'	EROSION CONTROL PLAN RELOCATED VANDEBROOK DR. SHEET NO. 3 OF 8 SHEETS STA. 287+00.00 TO STA. 300+00.00	F.A.U. RTE. 9324	SECTION 68-R-1	COUNTY MONROE	TOTAL SHEETS 192	SHEET NO. 72
PLOT SCALE = 100.0000' / in.	CHECKED - TMM	REVISED -	CONTRACT NO. 76F51								
PLOT DATE = 10/2/2012	DATE -	REVISED -	ILLINOIS FED. AID PROJECT								