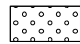






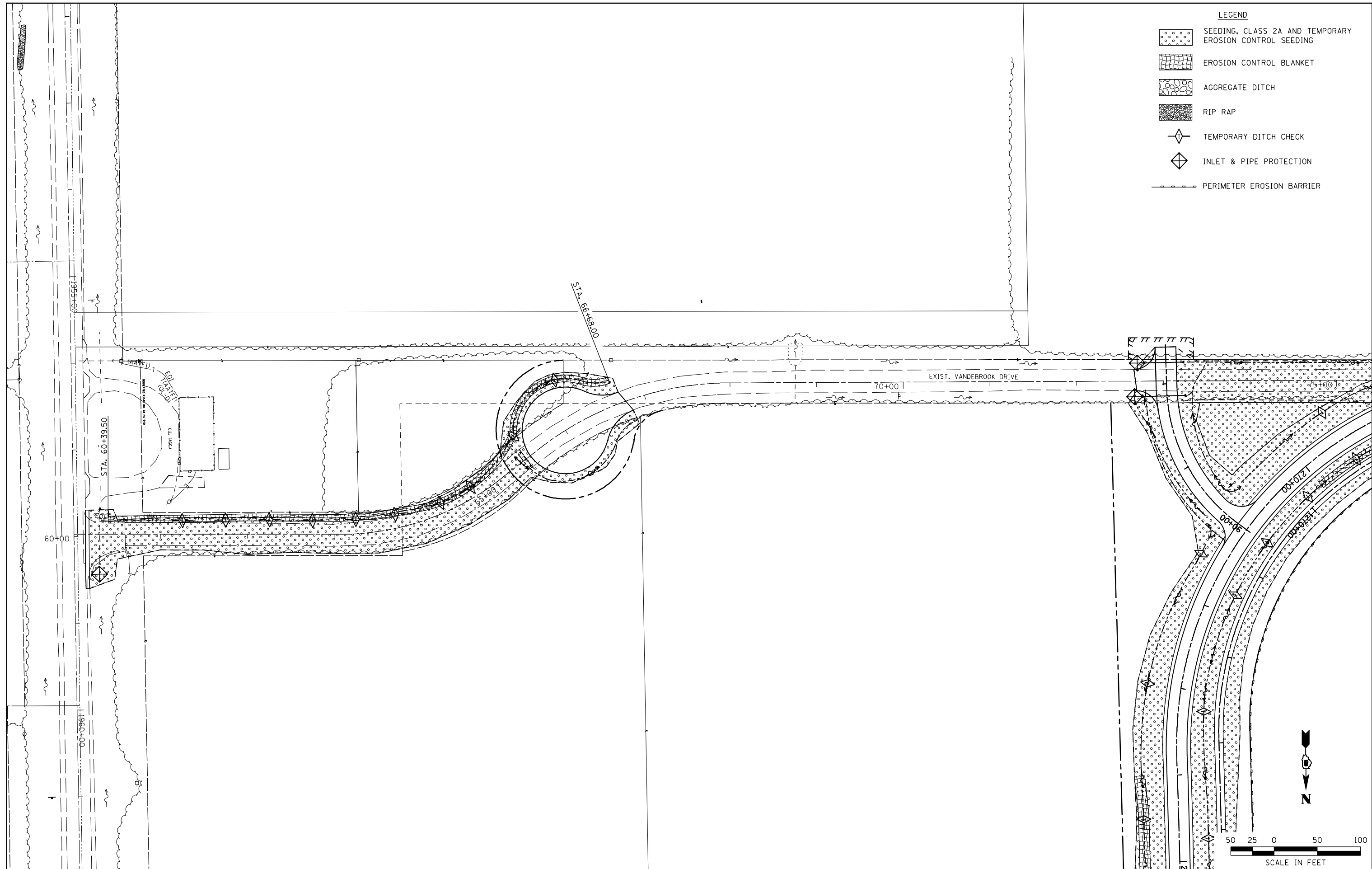


- LEGEND**
-  SEEDING, CLASS 2A AND TEMPORARY EROSION CONTROL SEEDING
  -  EROSION CONTROL BLANKET
  -  AGGREGATE DITCH
  -  RIP RAP
  -  TEMPORARY DITCH CHECK
  -  INLET & PIPE PROTECTION
  -  PERIMETER EROSION BARRIER



FILE NAME =	USER NAME = Richard Heinke	DESIGNED - JAH	REVISED -
F:\Projects\IDOT PROJECTS\09-101-11.4\Drawings\CADD Sheets\Contract 1\48.0876F51-sht	DRAWN - RNH	CHECKED - TMM	DATE -
	PLOT SCALE = 100.0000' / in.		
	PLOT DATE = 10/2/2012		

**STATE OF ILLINOIS  
DEPARTMENT OF TRANSPORTATION**

McDonough-Whillow, P.C.  
PROFESSIONAL DESIGN NO. 184-002754  
SCALE: 1" = 50'

**EROSION CONTROL PLAN**  
EXISTING VANDEBROOK DRIVE

SHEET NO. 8 OF 8 SHEETS STA. 60+00.00 TO STA.

F.A.U. RTE.	SECTION	COUNTY	TOTAL SHEETS	SHEET NO.
9324	68-R-1	MONROE	192	77
<b>CONTRACT NO. 76F51</b>				
ILLINOIS FED. AID PROJECT				