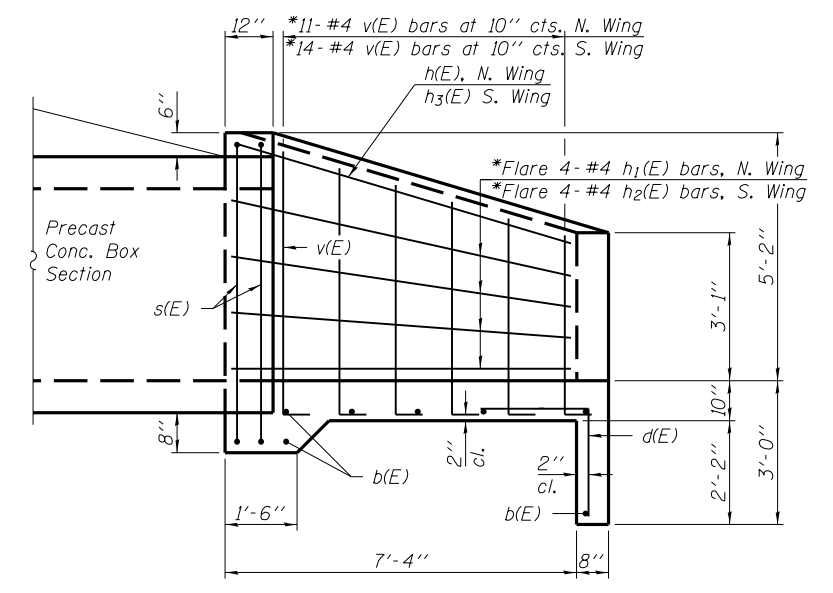
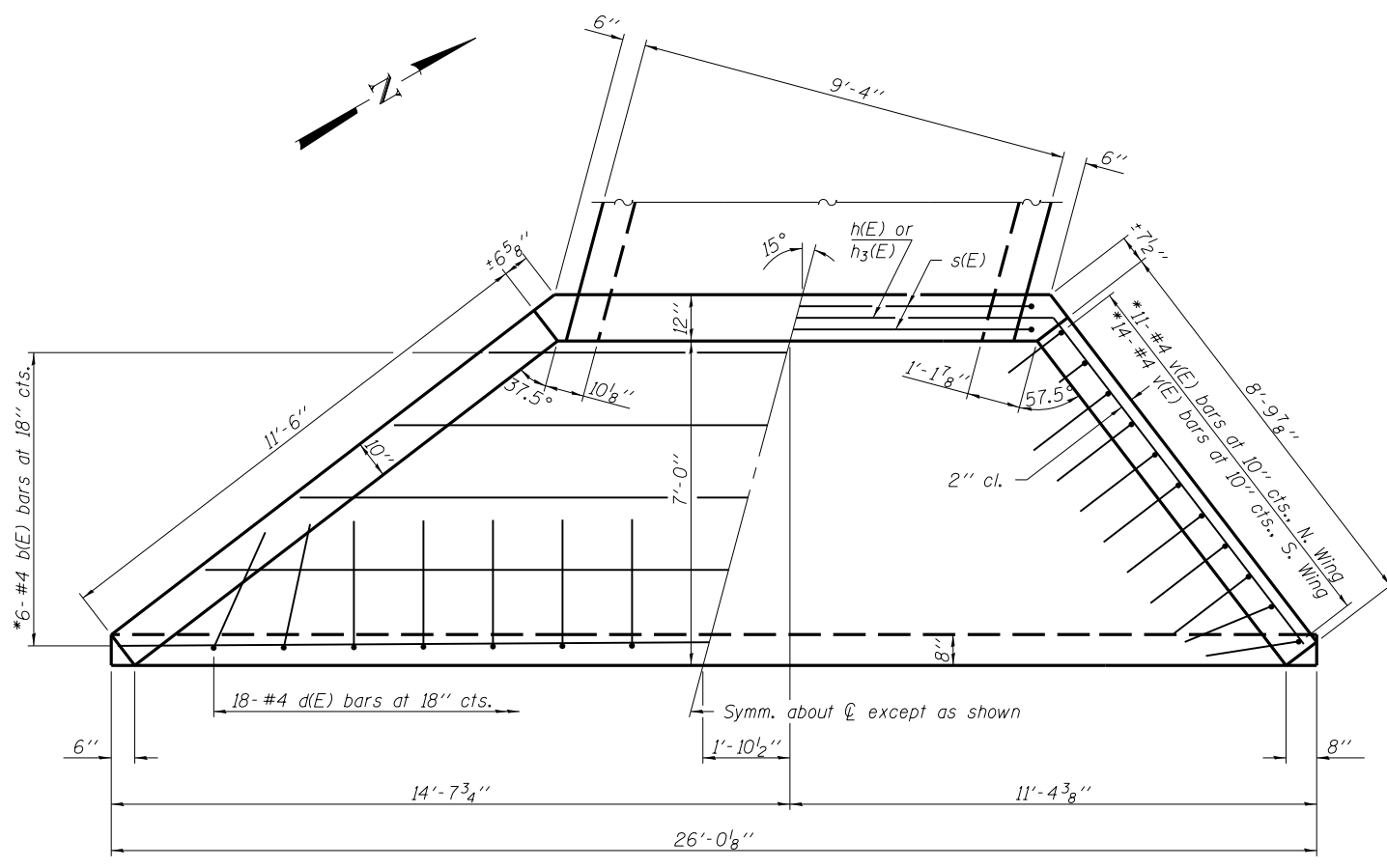


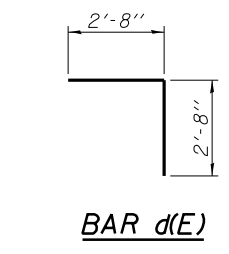
**END ELEVATION**



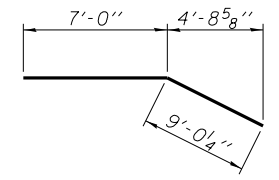
**HALF SIDE ELEVATION**



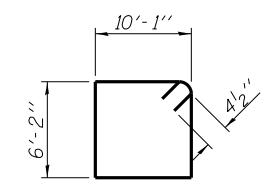
**PLAN**



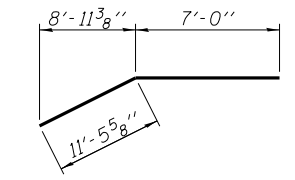
**BAR d(E)**



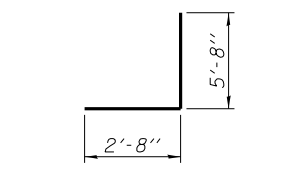
**BAR h(E)**



**BAR s(E)**



**BAR h3(E)**



**BAR v(E)**

**BILL OF MATERIAL**

Bar	No.	Size	Length	Shape
b(E)	8	#4	25'-8"	—
d(E)	18	#4	5'-4"	J
h(E)	1	#4	16'-0"	—
h1(E)	4	#4	9'-1"	—
h2(E)	4	#4	11'-8"	—
h3(E)	1	#4	18'-6"	—
s(E)	2	#4	33'-3"	□
v(E)	25	#4	8'-4"	J
Reinforcement Bars, Epoxy Coated			Pound	460
Concrete Box Culverts			Cu. Yd.	9.3

Notes:  
For Downstream cast-in-place apron end, see sheet 102 of 192.  
Reinforcement bars designated (E) shall be epoxy coated.

LAST SAVED = PLASTERUPDATE\$  
PEN TABLE = #PENTRIBL\$  
PLOT DRIVER = #PLTDIVS\$

FILE NAME =	USER NAME = jepettibone	DESIGNED K.A. Klues	REVISED -
1:\1001100\Phase II - 76F51\Cad\S\Plans\0672428-76F51.dgn		DRAWN K.A. Klues	REVISED -
	PLOT SCALE = 0:2.0000 '1' / in.	CHECKED E.M. Lagemann	REVISED -
	PLOT DATE = 10/4/2012 3:12:33 PM	DATE -	REVISED -

**STATE OF ILLINOIS  
DEPARTMENT OF TRANSPORTATION**

**HORNER &  
SHIRIN, INC.  
ENGINEERS**

**UPSTREAM CAST-IN-PLACE APRON END**  
S.N. 067-2428

F.A.U. R.T.E.	SECTION	COUNTY	TOTAL SHEETS	SHEET NO.
9324	68-R-1	MONROE	192	101
				CONTRACT NO. 76F51

SCALE: SHEET NO. 2 OF 3 SHEETS STA. 288+40.76 TO STA. 288+82.45

ILLINOIS FED. AID PROJECT