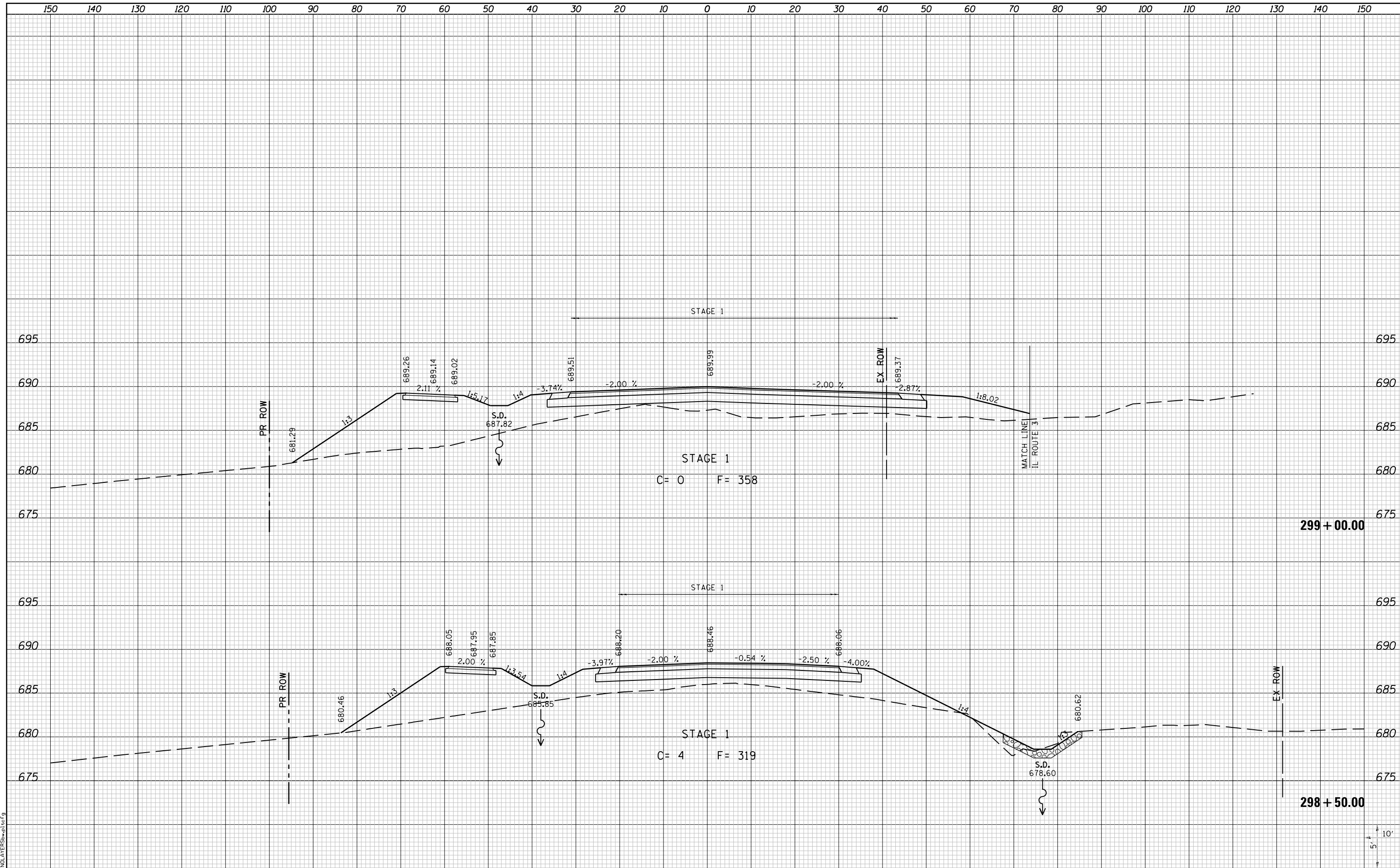


DATE	
BY	
FINAL SURVEY	SURVEYED
NOTE BOOK	PLOTTED
NO.	TEMPLATE
	AREAS
	CHECKED

DATE	
BY	
ORIGINAL SURVEY	SURVEYED
NOTE BOOK	PLOTTED
NO.	TEMPLATE
	AREAS
	CHECKED



LAST SAVED = 10/3/2012
 PEN TABLE = VBI-HA17.rdi
 PLOT DRIVER = PdfPlotterSpw.batcf9

FILE NAME =	I:\10011001\Phase II - 76F51\Cad\T\Plans\100.0876F51-sh1-Relocated_Vandebrook_Dr-xssht.dgn
USER NAME =	jepettibone
DESIGNED -	REVISIED -
DRAWN -	REVISIED -
CHECKED -	REVISIED -
DATE -	REVISIED -
PLOT SCALE =	20.0000" / in.
PLOT DATE =	10/4/2012 5:12:02 PM

STATE OF ILLINOIS
 DEPARTMENT OF TRANSPORTATION



SCALE: 10H:5V
 SHEET NO. 30 OF 31 SHEETS
 STA. 298+50.00 TO STA. 299+00.00

F.A.U. RTE.	SECTION	COUNTY	TOTAL SHEETS	SHEET NO.
9324	68-R-1	MONROE	192	139
CONTRACT NO. 76F51			ILLINOIS FED. AID PROJECT	