

1/8" elastomeric neoprene leveling pad according to the material properties of Article 1052.02 of the Standard Specifications. Cost included with Structural Steel.

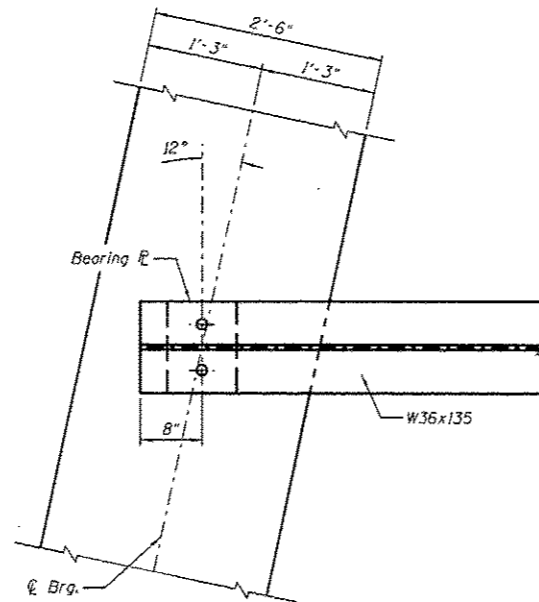
1" ϕ x 12" anchor bolts (ASTM F1554 Grade 36) with 2 1/4" x 2 1/4" x 5/16" ϕ washer under nut. 1 3/8" x 2" slotted hole in flange. 1/2" ϕ holes in bearing plate.

ELEVATION AT ABUTMENTS

SECTION A-A

FIXED BEARING

- (At South Abutment, Southbound - 7 Required)
- (At North Abutment, Southbound - 7 Required)
- (At South Abutment, Northbound - 7 Required)
- (At North Abutment, Northbound - 7 Required)



BEARING PLAN AT ABUTMENTS

Notes:
 The anchor bolt sizes and grades shown constitute a calculated seismic structural fuse. Substitution of higher diameter and/or grade anchor bolts will not be allowed.
 Anchor bolts at fixed bearings may be either cast in place or installed in holes drilled after the supported member is in place.
 Drilled and set anchor bolts shall be installed according to Article 521.06 of the Standard Specifications.

BILL OF MATERIAL

Item	Unit	Total
Anchor Bolts, 1"	Each	56

NOTES:

- 1.) The structural steel plates of the Bearing Assembly shall conform to the requirements of AASHTO M 270 Grade 50W.
- 2.) Two 1/8 in. adjusting shims shall be provided for each bearing in addition to all other plates or shims and placed as shown on bearing details.

REVISI^oN 1-4-13

<p>Farnsworth GROUP, INC. 2709 McGraw Drive Bloomington, Illinois 61704 309/553-8433, 309/553-1374 fax</p>	DESIGNED - TCR/JCZ	REVISED - DJM 12/21/12	STATE OF ILLINOIS DEPARTMENT OF TRANSPORTATION	FIXED BEARING DETAILS STRUCTURE NO. 082-0385 NB & 082-0386 SB	F.A.P. RTE.	SECTION	COUNTY	TOTAL SHEETS	SHEET NO.
	CHECKED - JML	REVISED			788	520-1-2B	ST. CLAIR	94	58
	DRAWN - DJM/JWK	REVISED			CONTRACT NO. 76F69				
	DATE - 06/26/12	CHECKED - MSW			REVISED	ILLINOIS FED. AID PROJECT			