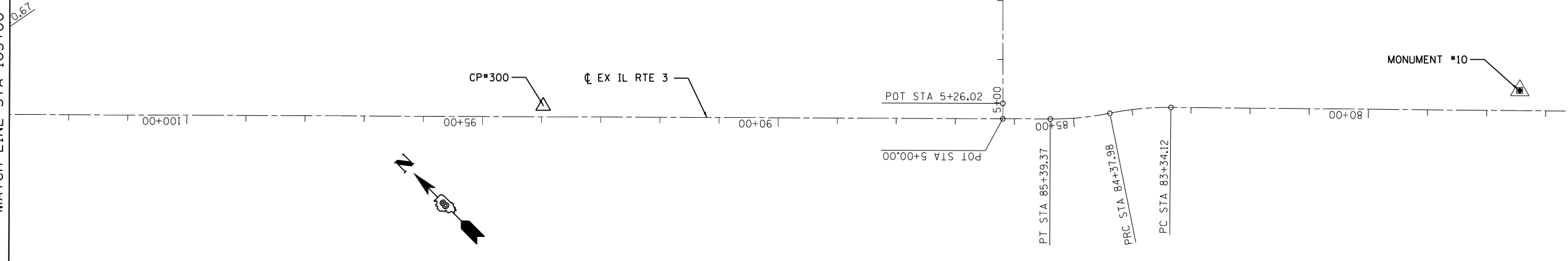
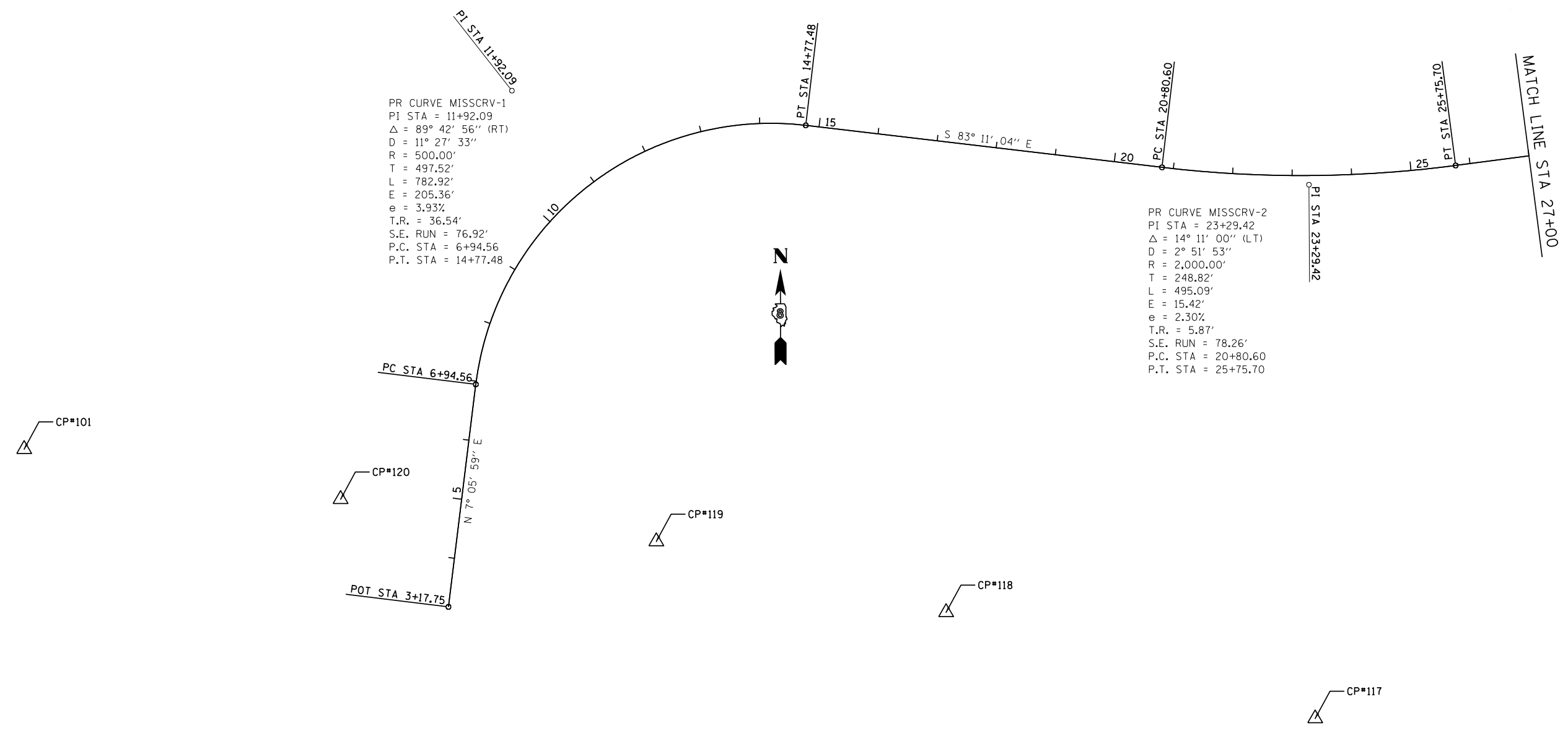


MATCH LINE STA 103+00



PR CURVE MISSCRV-1  
 PI STA = 11+92.09  
 $\Delta = 89^\circ 42' 56''$  (RT)  
 $D = 11^\circ 27' 33''$   
 $R = 500.00'$   
 $T = 497.52'$   
 $L = 782.92'$   
 $E = 205.36'$   
 $e = 3.93\%$   
 $T.R. = 36.54'$   
 $S.E. RUN = 76.92'$   
 $P.C. STA = 6+94.56$   
 $P.T. STA = 14+77.48$

PR CURVE MISSCRV-2  
 PI STA = 23+29.42  
 $\Delta = 14^\circ 11' 00''$  (LT)  
 $D = 2^\circ 51' 53''$   
 $R = 2,000.00'$   
 $T = 248.82'$   
 $L = 495.09'$   
 $E = 15.42'$   
 $e = 2.30\%$   
 $T.R. = 5.87'$   
 $S.E. RUN = 78.26'$   
 $P.C. STA = 20+80.60$   
 $P.T. STA = 25+75.70$



USER NAME = #USER#	DESIGNED - JJ0	REVISED -
PLOT SCALE = #SCALE#	DRAWN - JJ0	REVISED -
PLOT DATE = #DATE#	CHECKED - PJM	REVISED -
	DATE - 06/26/12	REVISED -

STATE OF ILLINOIS  
 DEPARTMENT OF TRANSPORTATION

ALIGNMENTS, TIES, AND BENCHMARKS

SCALE:	SHEET NO.	OF	SHEETS	STA.	TO	STA.
--------	-----------	----	--------	------	----	------

F.A.P. RTE.	SECTION	COUNTY	TOTAL SHEETS	SHEET NO.
788	520-1-2B	ST. CLAIR	94	12
CONTRACT NO. 76F69				
ILLINOIS FED. AID PROJECT				