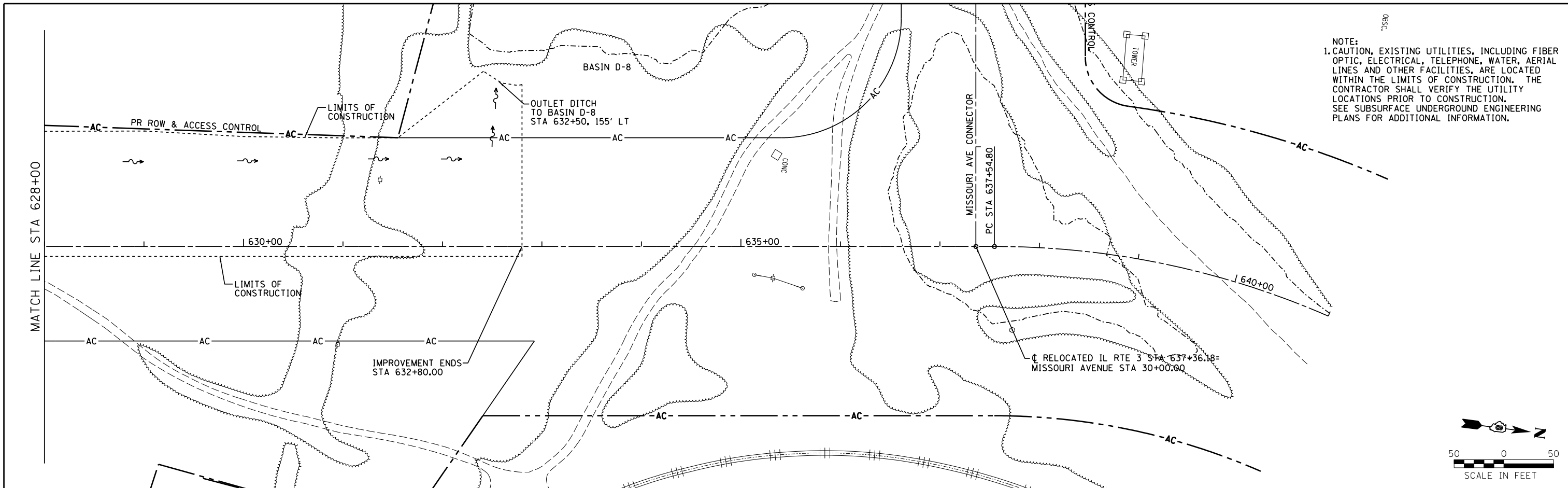
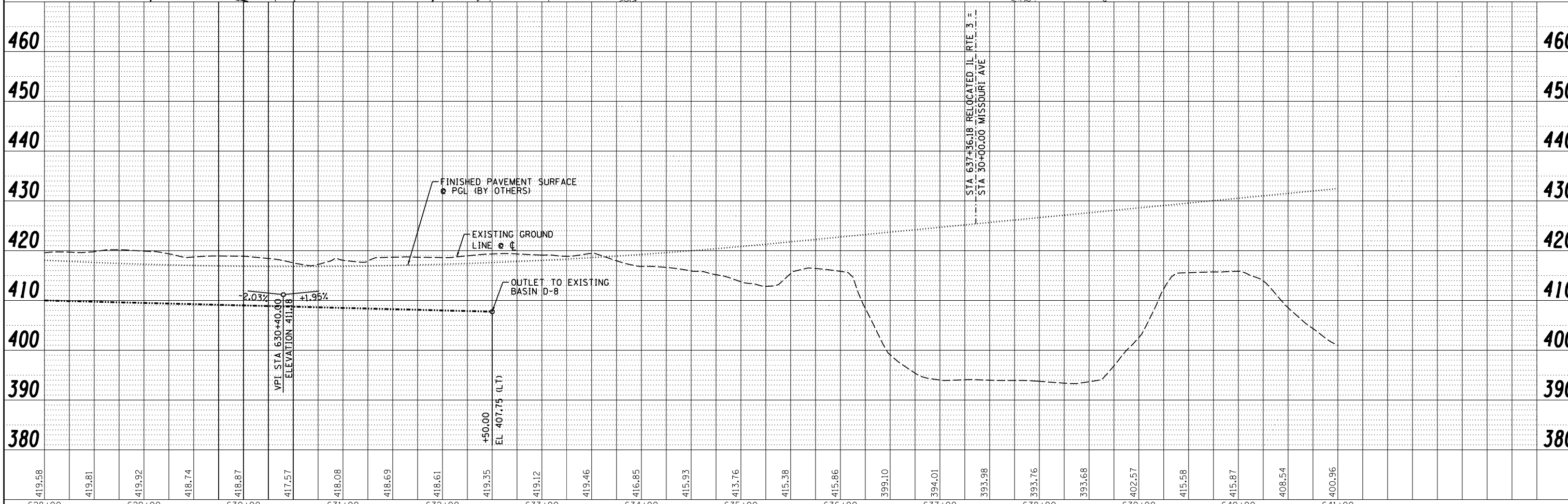
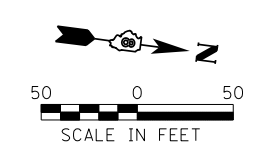


PLAN	SURVEYED	BY	DATE
	PLOTTED		
	CHECKED		
	AT		
	FILE NAME		
	NO.		

PROFILE	SURVEYED	BY	DATE
	PLOTTED		
	CHECKED		
	AT		
	FILE NAME		
	NO.		



NOTE:  
 1. CAUTION, EXISTING UTILITIES, INCLUDING FIBER OPTIC, ELECTRICAL, TELEPHONE, WATER, AERIAL LINES AND OTHER FACILITIES, ARE LOCATED WITHIN THE LIMITS OF CONSTRUCTION. THE CONTRACTOR SHALL VERIFY THE UTILITY LOCATIONS PRIOR TO CONSTRUCTION. SEE SUBSURFACE UNDERGROUND ENGINEERING PLANS FOR ADDITIONAL INFORMATION.



USER NAME : *USER*	DESIGNED - JJO	REVISED -
	DRAWN - JJO	REVISED -
PLOT SCALE : *SCALE*	CHECKED - PJM	REVISED -
PLOT DATE : *DATE*	DATE - 06/26/12	REVISED -

**STATE OF ILLINOIS  
 DEPARTMENT OF TRANSPORTATION**

**PLAN & PROFILE**

SCALE: 1"=50' SHEET NO. OF SHEETS STA. 628+00 TO STA. 641+00

F.A.P. RTE.	SECTION	COUNTY	TOTAL SHEETS	SHEET NO.
788	520-1-2B	ST. CLAIR	94	15
CONTRACT NO. 76F69				
ILLINOIS FED. AID PROJECT				