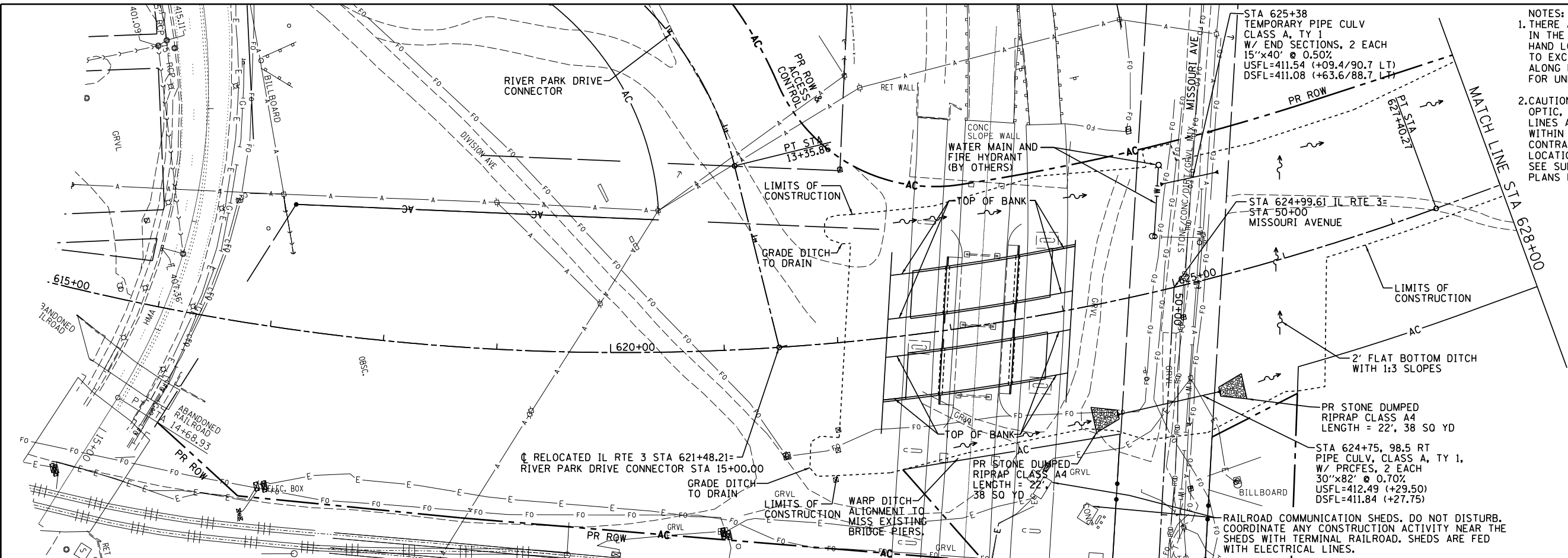
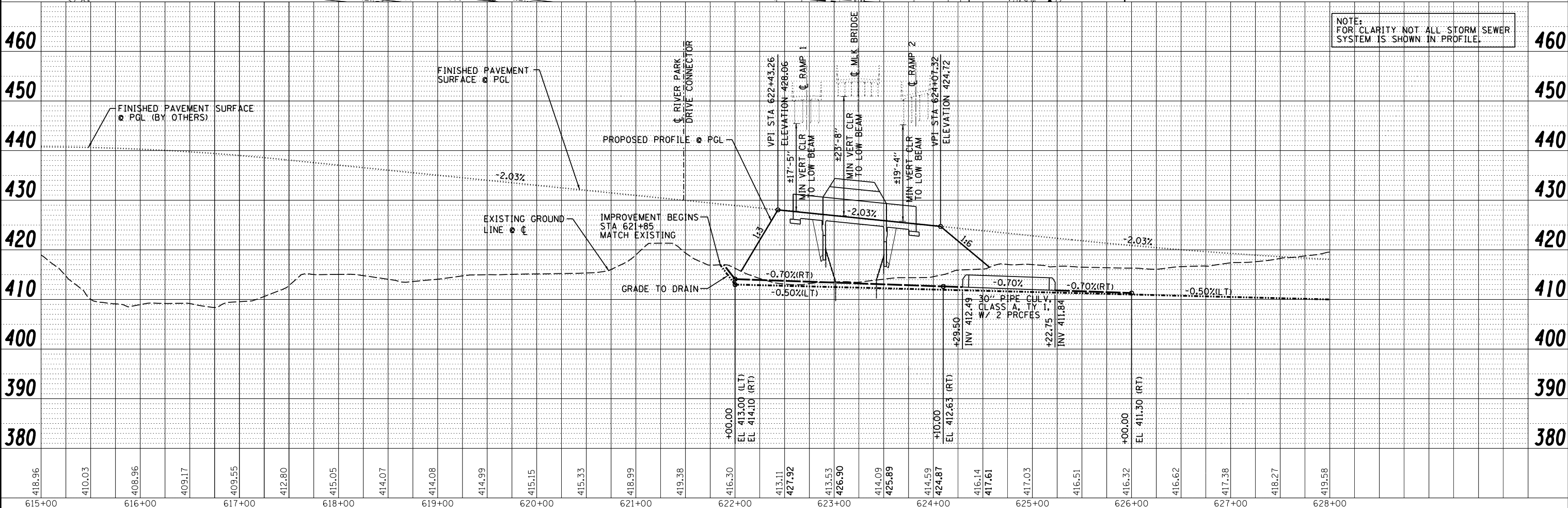
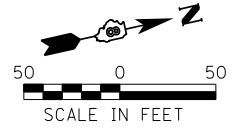


PLAN	SURVEYED	BY	DATE
	PLOTTED		
	CHECKED		
	AT		
	FILE		
	NO.		

PROFILE	SURVEYED	BY	DATE
	PLOTTED		
	CHECKED		
	AT		
	FILE		
	NO.		



- NOTES:
1. THERE ARE SEVERAL FIBER OPTICS LINES IN THE AREA. THE CONTRACTOR SHALL HAND LOCATE AND EXPOSE THESE PRIOR TO EXCAVATING FOR THE PROJECT PARTICULARLY ALONG MISSOURI AVE. THIS WORK SHALL BE PAID FOR UNDER ARTICLE 10904.
 2. CAUTION, EXISTING UTILITIES, INCLUDING FIBER OPTIC, ELECTRICAL, TELEPHONE, WATER, AERIAL LINES AND OTHER FACILITIES, ARE LOCATED WITHIN THE LIMITS OF CONSTRUCTION. THE CONTRACTOR SHALL VERIFY THE UTILITY LOCATIONS PRIOR TO CONSTRUCTION. SEE SUBSURFACE UNDERGROUND ENGINEERING PLANS FOR ADDITIONAL INFORMATION.



NOTE: FOR CLARITY NOT ALL STORM SEWER SYSTEM IS SHOWN IN PROFILE.



USER NAME : *USER*	DESIGNED - JJO	REVISED -
	DRAWN - JJO	REVISED -
PLOT SCALE : *SCALE*	CHECKED - PJM	REVISED -
PLOT DATE : *DATE*	DATE - 06/26/12	REVISED -

STATE OF ILLINOIS
DEPARTMENT OF TRANSPORTATION

DRAINAGE PLAN & PROFILE

SCALE: 1"=50' SHEET NO. OF SHEETS STA. 615+00 TO STA. 628+00

F.A.P. RTE.	SECTION	COUNTY	TOTAL SHEETS	SHEET NO.
788	520-1-2B	ST. CLAIR	94	17
CONTRACT NO. 76F69				
ILLINOIS FED. AID PROJECT				