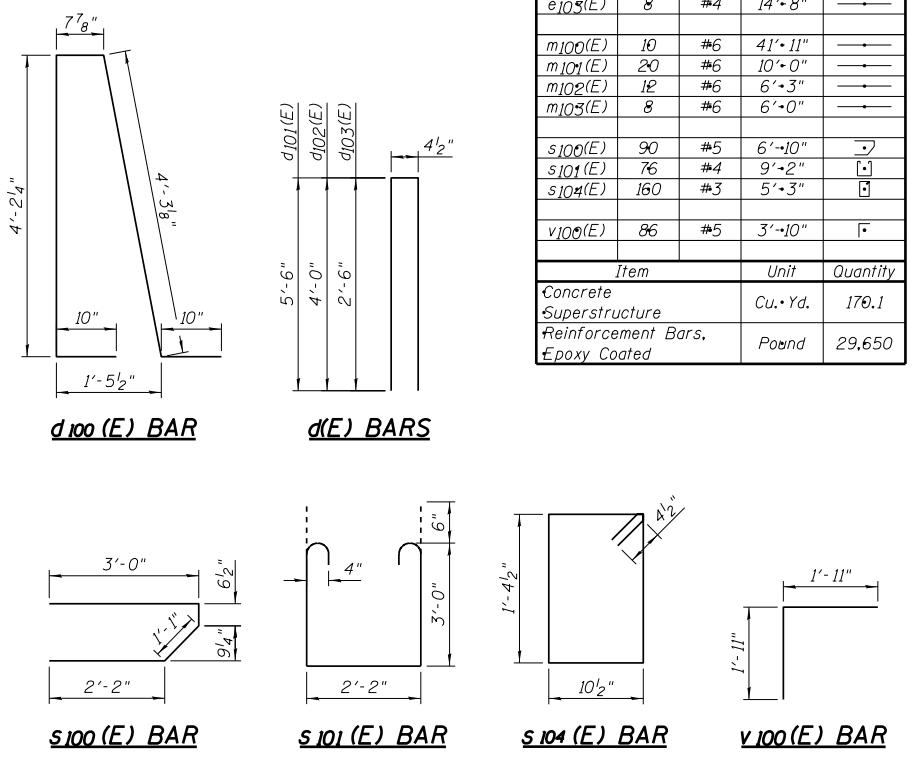
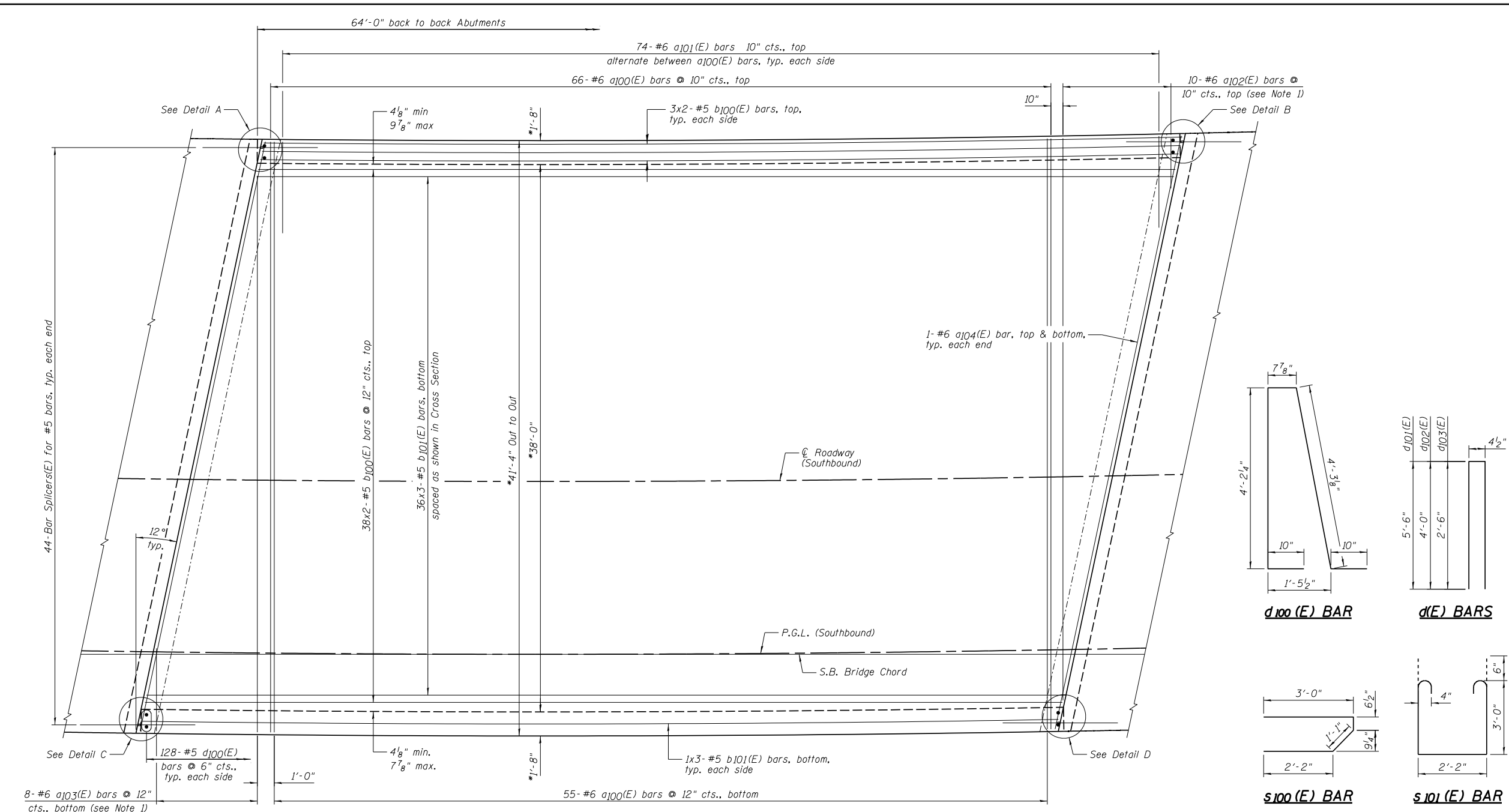


**SUPERSTRUCTURE
BILL OF MATERIAL**

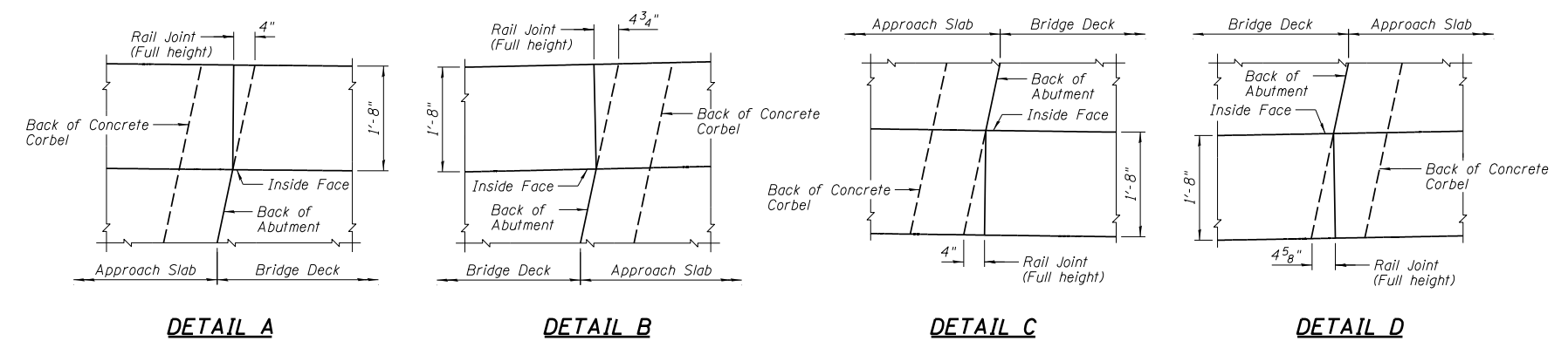
Bar	No.	Size	Length	Shape
a100(E)	121	#6	41'-0"	—
a101(E)	148	#6	6'-6"	—
a102(E)	10	#6	43'-10"	—
a103(E)	8	#6	45'-6"	—
a104(E)	4	#6	41'-11"	—
b100(E)	88	#5	33'-2"	—
b101(E)	114	#5	23'-0"	—
d100(E)	256	#5	10'-9"	R
d101(E)	196	#5	11'-5"	R
d102(E)	36	#5	8'-5"	R
d103(E)	16	#5	5'-5"	R
e100(E)	40	#6	31'-8"	—
e101(E)	20	#4	55'-3"	—
e102(E)	20	#8	43'-3"	—
e103(E)	8	#4	14'-8"	—
m100(E)	10	#6	41'-11"	—
m101(E)	20	#6	10'-0"	—
m102(E)	12	#6	6'-3"	—
m103(E)	8	#6	6'-0"	—
s100(E)	90	#5	6'-10"	—
s101(E)	76	#4	9'-2"	—
s104(E)	160	#3	5'-3"	—
v100(E)	86	#5	3'-10"	—
Item	Unit	Quantity		
Concrete Superstructure	Cu. Yd.	170.1		
Reinforcement Bars, Epoxy Coated	Pound	29,650		



PLAN

*Indicates dimension are measured radially.

BAR LAP
#5 - 2'-7"



BAR CUTTING DIAGRAM

BAR	A	B	C	D	E	F	L
a102(E)	39'-6"	4'-4"	39'-6"	4'-4"	1	10	43'-10"
a103(E)	39'-2"	6'-4"	39'-2"	6'-4"	1	8	45'-6"
e101(E)	30'-3"	25'-0"	30'-3"	25'-0"	4	5	55'-3"
e102(E)	23'-4"	19'-11"	23'-4"	19'-11"	4	5	43'-3"

NOTES:

- Order a102(E) and a103(E) bars full length. Cut according to Bar Cutting Diagram. Use remainder of bars on opposite end of deck.
- Bars indicated, thus 1x3- #5 etc., indicates 1 lines of bars with 3 lengths per line.
- See Sheet A38, for Bar Splicer Details.
- See Sheets A12, A14 & A15 for Rail Details.



DESIGNED - TCR/JCZ	REVISED
CHECKED - JML	REVISED
DRAWN - DJM/JWK	REVISED
CHECKED - MSW	REVISED

**STATE OF ILLINOIS
DEPARTMENT OF TRANSPORTATION**

**SUPERSTRUCTURE DECK, SOUTHBOUND ROADWAY
STRUCTURE NO. 082-0385 NB & 082-0386 SB**

F.A.P. RTE.	SECTION	COUNTY	TOTAL SHEETS	SHEET NO.
788	520-1-2B	ST. CLAIR	94	40
CONTRACT NO. 76F69				