

STATE OF ILLINOIS  
DEPARTMENT OF TRANSPORTATION  
DIVISION OF HIGHWAYS

PROPOSED  
HIGHWAY PLANS

FAI ROUTE 64 (I-64)  
SECTION 82-1-R(A)LS

ST. CLAIR COUNTY  
C-98-062-12  
PROPOSED I-64 LANDSCAPING  
FROM I-55/70 TO 18TH STREET

F.A.I. RTE.	SECTION	COUNTY	TOTAL SHEETS	SHEET NO.
64	82-1-R(A)LS	ST. CLAIR	83	1
FED. ROAD DIST. NO.	ILLINOIS	CONTRACT NO. 76F71		

FOR INDEX OF SHEETS, SEE SHEET NO. 2

DESIGN DESIGNATIONS

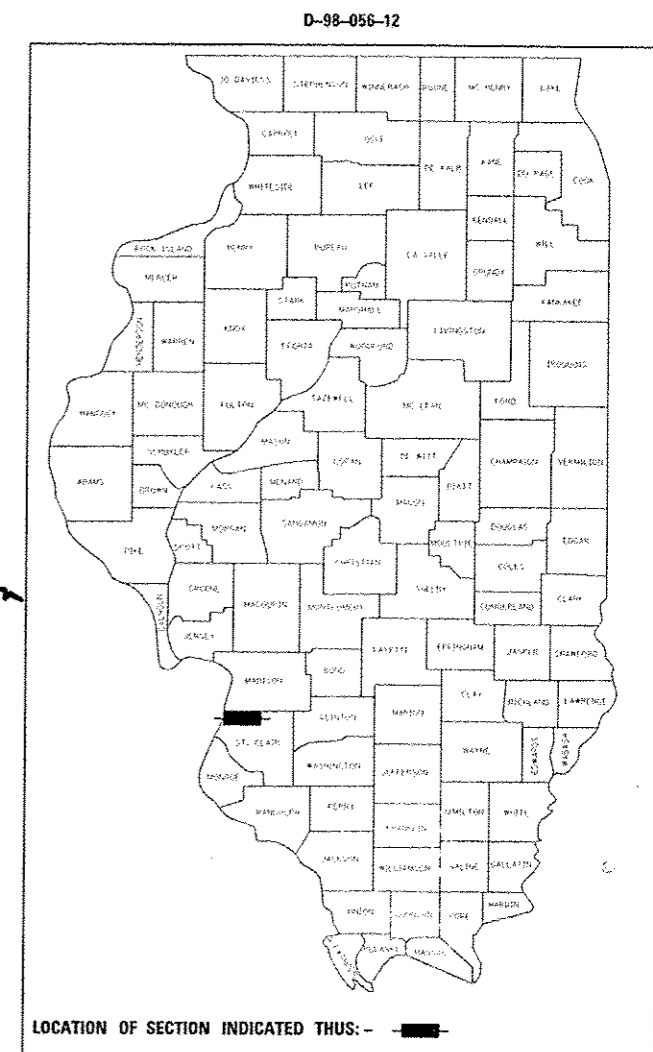
RAMP 55N64E	28,200	(2030) FREEWAY DIRECTIONAL RAMP
RAMP 55S64E	3,170	(2030) FREEWAY DIRECTIONAL RAMP
RAMP 64W55N	2,790	(2030) FREEWAY DIRECTIONAL RAMP
RAMP 64W55S	25,850	(2030) FREEWAY DIRECTIONAL RAMP
RAMP 64W70W	14,910	(2030) FREEWAY DIRECTIONAL RAMP
RAMP 70E64E	16,050	(2030) FREEWAY DIRECTIONAL RAMP
RAMP A	2,250	(2030) FREEWAY RAMP
EB I-64	45,340	(2030) FREEWAY
WB I-64	49,730	(2030) FREEWAY
I-55 NB	60,810	(2030) FREEWAY
I-55 SB	57,050	(2030) FREEWAY
RAMP 55S70W	13,560	(2030) FREEWAY DIRECTIONAL RAMP
RAMP 70E55N	19,350	(2030) FREEWAY DIRECTIONAL RAMP
RAMP "P"	2,420	(2030) FREEWAY RAMP
RAMP "O"	1,560	(2030) FREEWAY RAMP
RAMP "K"	1,700	(2030) FREEWAY RAMP

POSTED /DESIGN SPEEDS:

RAMP 55N64E	50 /60 MPH
RAMP 55S64E	50 /60 MPH
RAMP 64W55N	50 /60 MPH
RAMP 64W55S	50 /60 MPH
RAMP 64W70W	50 /60 MPH
RAMP 70E64E	50 /60 MPH
RAMP A	30 /30 MPH
EB I-64	50 /60 MPH
WB I-64	50 /60 MPH
I-55 NB	50 /60 MPH
I-55 SB	50 /60 MPH
RAMP 55S70W	50 /50 MPH
RAMP 70E55N	50 /50 MPH
RAMP "P"	50 /50 MPH
RAMP "O"	35 /35 MPH
RAMP "K"	25 /40 MPH

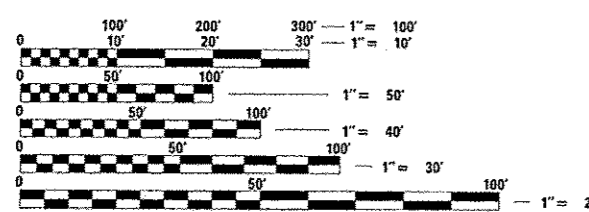


*Robert J. Stern*  
ROBERT J. STERN  
EXPIRES: 11/30/13  
DATE: 11/9/12  
SHEETS: 1-5, 15-44



PROJECT LOCATED IN: EAST ST. LOUIS, ILLINOIS

PLANS 1" = 50'  
PLANS 1" = 20'

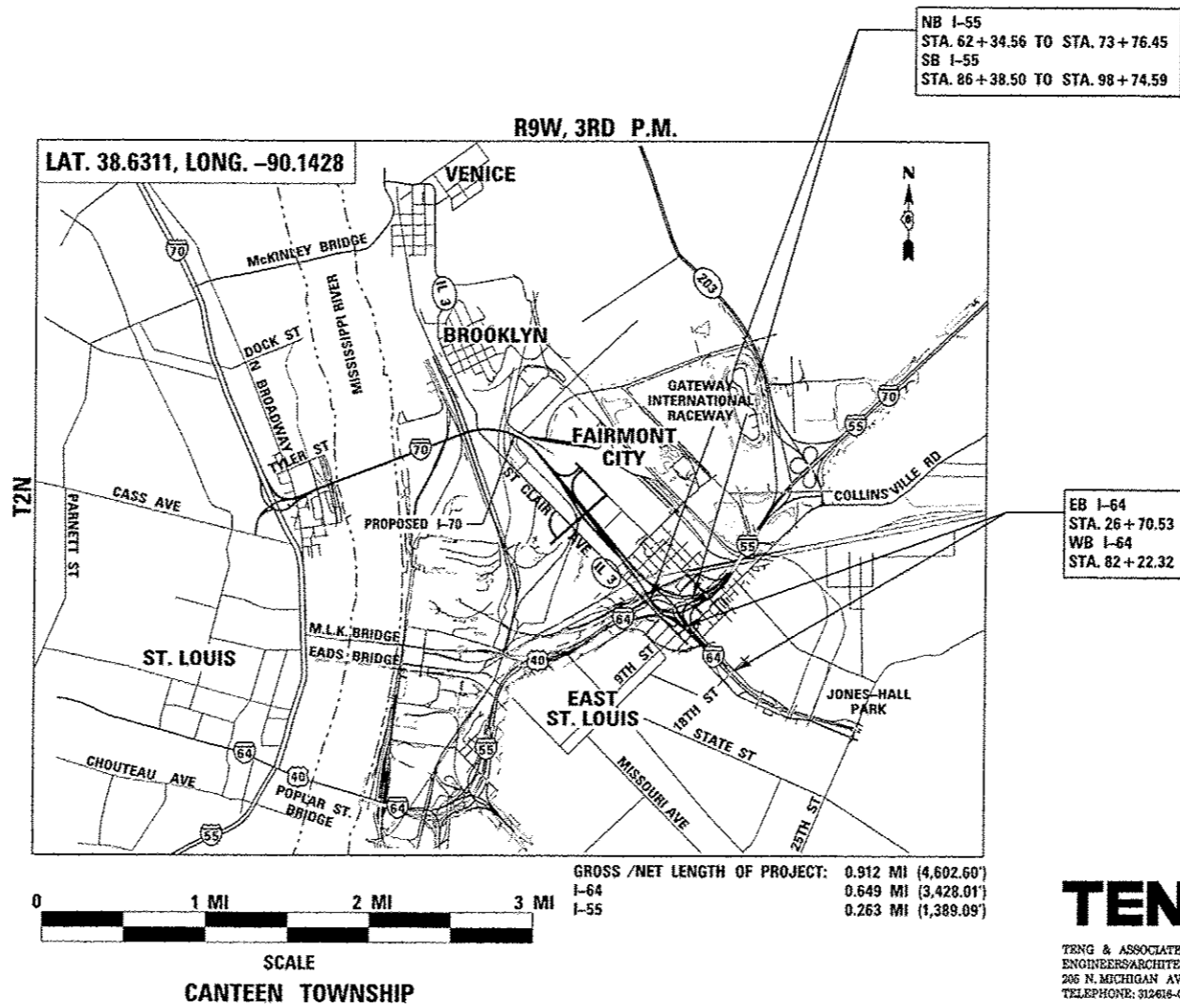


FULL SIZE PLANS HAVE BEEN PREPARED USING STANDARD ENGINEERING SCALES. REDUCED SIZED PLANS WILL NOT CONFORM TO STANDARD SCALES. IN MAKING MEASUREMENTS ON REDUCED PLANS, THE ABOVE SCALES MAY BE USED.

J.U.L.I.E.  
JOINT UTILITY LOCATION INFORMATION FOR EXCAVATION  
1-800-892-0123  
QR 811

PROJECT ENGINEER : MICHAEL D. PRITCHETT (618) 346-3180  
PROJECT MANAGER : NA

CONTRACT NO. 76F71



NB I-55  
STA. 62+34.56 TO STA. 73+76.45  
SB I-55  
STA. 86+38.50 TO STA. 98+74.59

EB I-64  
STA. 26+70.53 TO STA. 60+98.54  
WB I-64  
STA. 82+22.32 TO STA. 113+49.39

GROSS /NET LENGTH OF PROJECT:	0.912 MI (4,602.60')
I-64	0.649 MI (3,428.01')
I-55	0.263 MI (1,389.09')

**TENG**  
TENG & ASSOCIATES, INC.  
ENGINEERS/ARCHITECTS/PLANNERS  
205 N. MICHIGAN AVE. CHICAGO, IL 60601  
TELEPHONE: 312-618-0000

STATE OF ILLINOIS  
DEPARTMENT OF TRANSPORTATION  
DIVISION OF HIGHWAYS  
SUBMITTED November 13, 2012  
*Don Jensen*  
DEPUTY DIRECTOR OF HIGHWAYS, REGION ENGINEER  
Dec 7 2012  
*John D. Baramally, P.E.*  
acting ENGINEER OF DESIGN AND ENVIRONMENT  
Dec 7 2012  
*William R. Frey, Jr.*  
acting DIRECTOR OF HIGHWAYS, CHIEF ENGINEER

PRINTED BY THE AUTHORITY  
OF THE STATE OF ILLINOIS