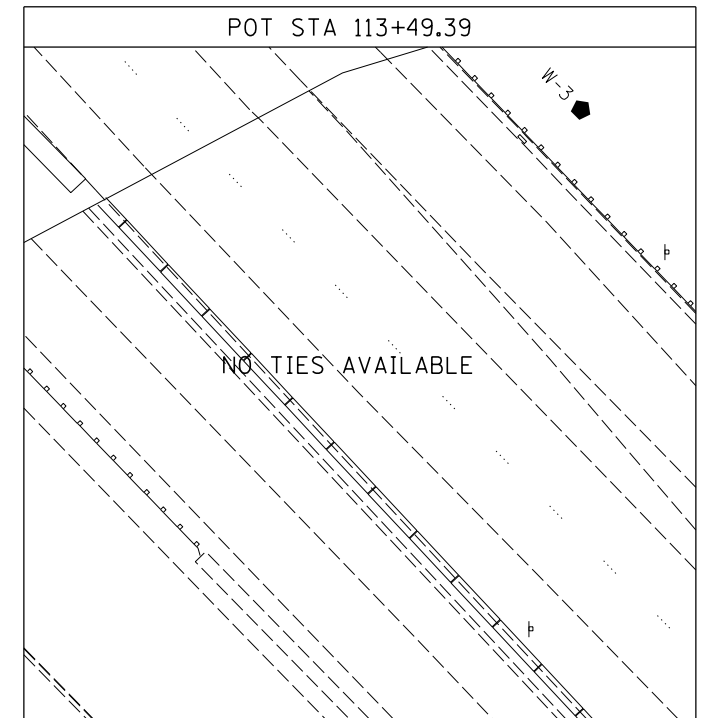
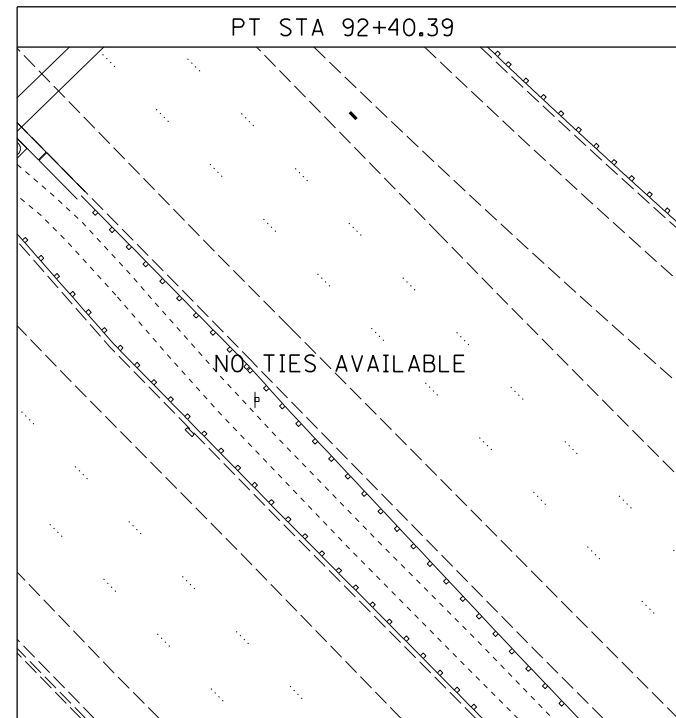
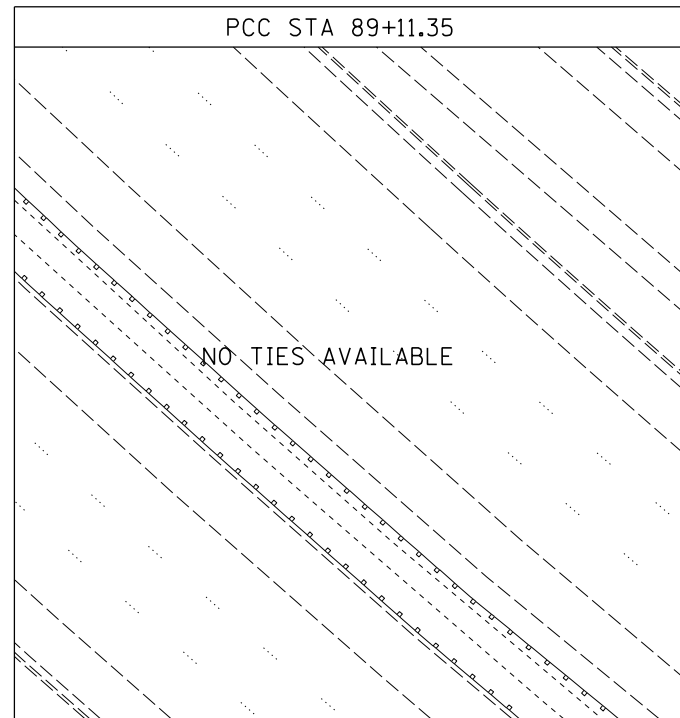
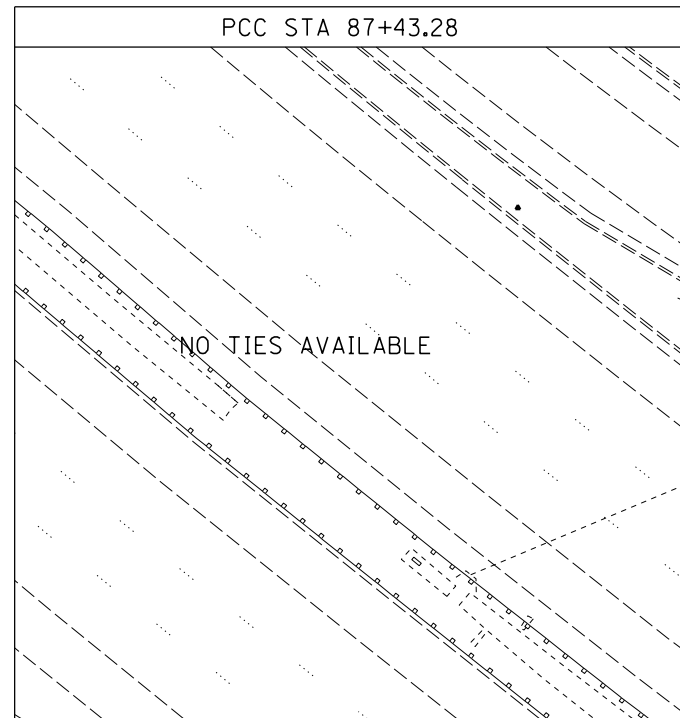
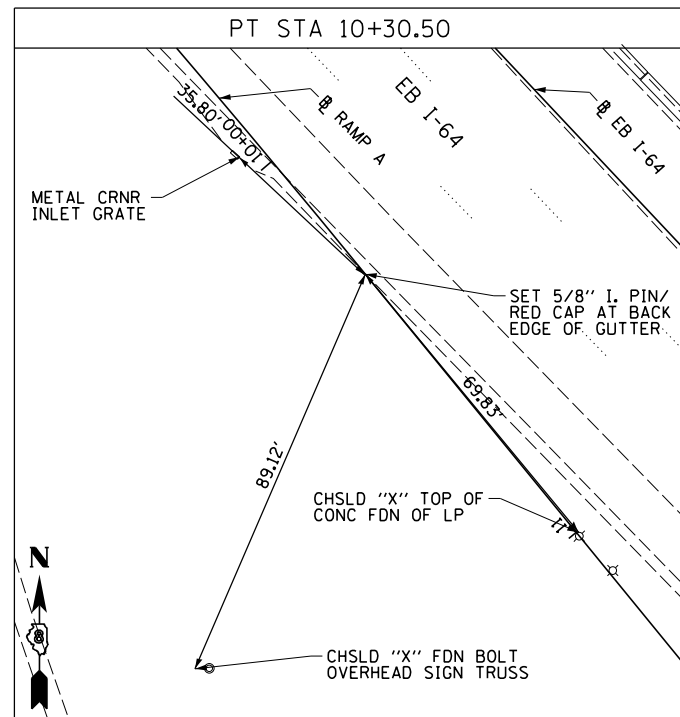
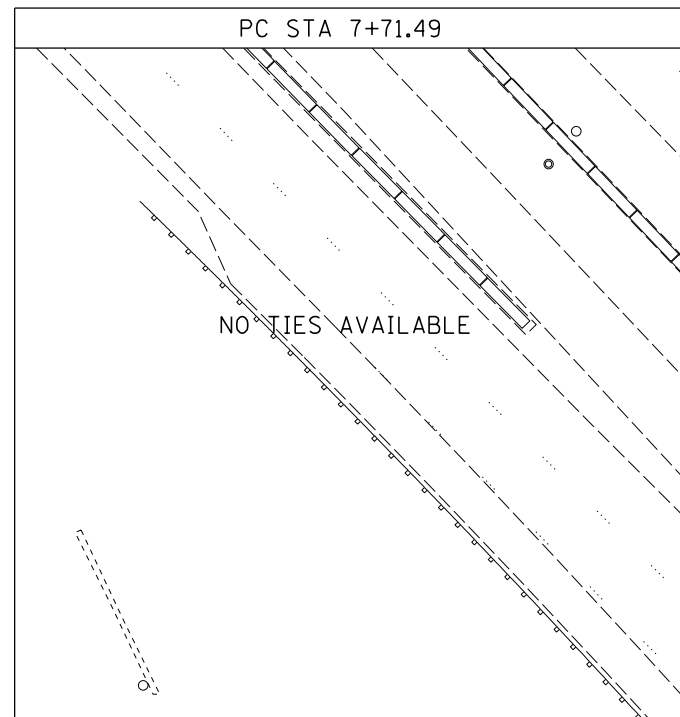


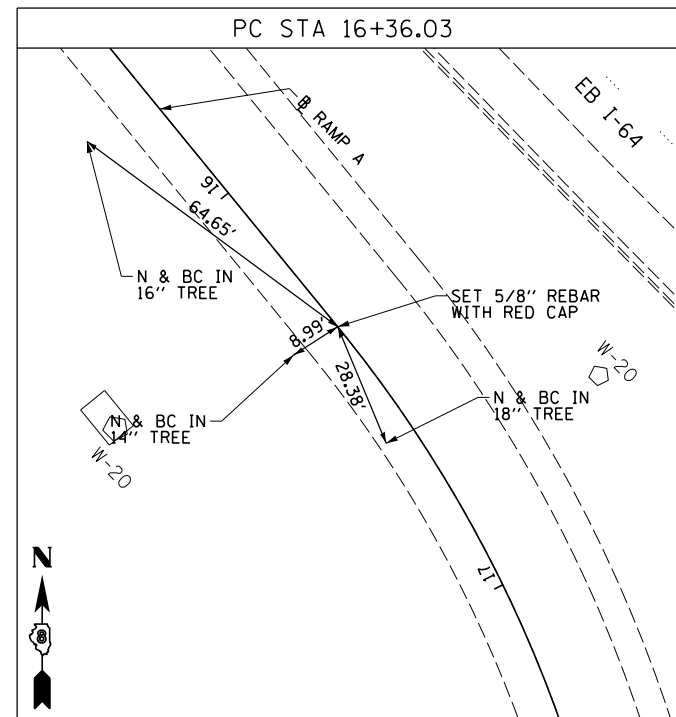
WB I-64



RAMP A



(CONTROL POINT MAY NEED TO BE RE-ESTABLISHED DUE TO CONSTRUCTION ACTIVITY)



(CONTROL POINT MAY NEED TO BE RE-ESTABLISHED DUE TO CONSTRUCTION ACTIVITY)

NOTE:
INFORMATION ON THIS SHEET
FROM CONTRACT 76C52

FILE NAME = DBTRI-76C52-sh1-ATB-06.dgn	USER NAME = searab	DESIGNED TTB	REVISED -
		DRAWN TTB	REVISED -
	PLOT SCALE = 40.0000' / in.	CHECKED JAH	REVISED -
	PLOT DATE = 1/24/2012	DATE 1-20-12	REVISED -

STATE OF ILLINOIS
DEPARTMENT OF TRANSPORTATION

ALIGNMENT, TIES AND BENCHMARKS

SCALE: NONE SHEET NO. 6 OF 9 SHEETS STA. TO STA.

F.A.I. RTE.	SECTION	COUNTY	TOTAL SHEETS	SHEET NO.
64	82-1-R(A)LS	ST. CLAIR	83	11
FED. ROAD DIST. NO. ILLINOIS FED. AID PROJECT			CONTRACT NO. 76F71	