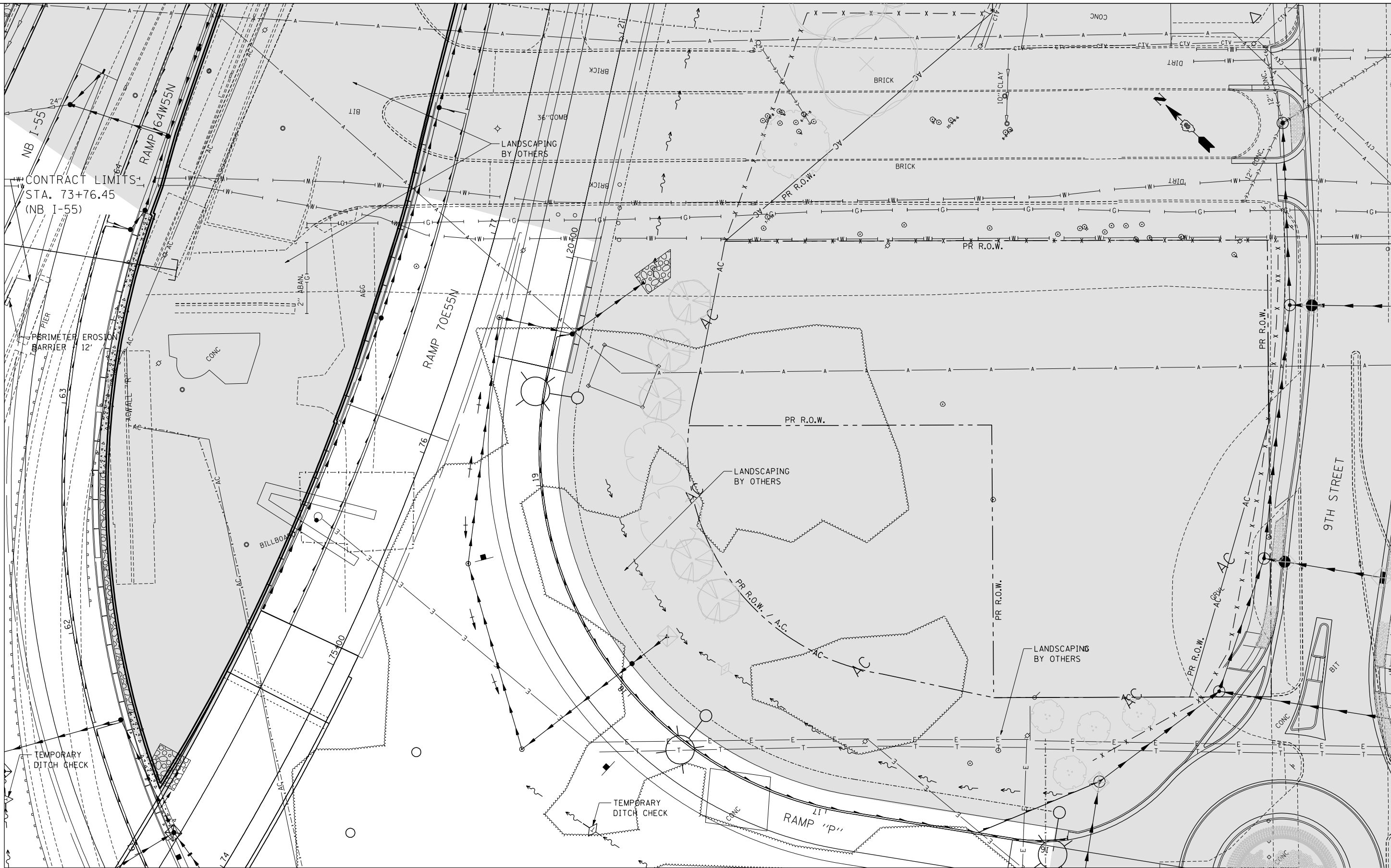


\DBTRI-71-LAYOUT.DGN, \DBCON-99-MOTIF.DGN, \DBTRI-7652-MOTIF.DGN, \DBTRI-7651-MOTIF.DGN, \DBTRI-36-LANDSCAP.DGN, \DBTRI-48-LANDSCAP.DGN, \DBTRI-71-LANDSCAP.DGN, \DBTRI-37-LANDSCAP.DGN, \DBTRI-71-SHT-LANDSCAP2-389.DGN  
 \DBTRI-71-BORDER.DGN, \DBCON-99-MOTIF.DGN, \DBTRI-7652-MOTIF.DGN, \DBTRI-7651-MOTIF.DGN, \DBTRI-36-LANDSCAP.DGN, \DBTRI-48-LANDSCAP.DGN, \DBTRI-71-LANDSCAP.DGN, \DBTRI-37-LANDSCAP.DGN, \DBTRI-71-SHT-LANDSCAP2-389.DGN  
 10-03-2012, 14:21:34

MATCH LINE "TRI-L"  
SEE SHEET 30



MATCH LINE "TRI-J"  
SEE SHEET 28

LANDSCAPING BY OTHERS

FILE NAME =  
#FILE#

USER NAME = #USER#  
PLOT SCALE = #SCALE#  
PLOT DATE = #DATE#

DESIGNED - JM  
DRAWN - MDN  
CHECKED - JB  
DATE - 10/05/12

REVISED -  
REVISED -  
REVISED -  
REVISED -

**STATE OF ILLINOIS  
DEPARTMENT OF TRANSPORTATION**

**PROPOSED LANDSCAPING PLANS  
TRI-LEVEL 9**

SCALE: 1"=20' SHEET NO. 9 OF 21 SHEETS STA. TO STA.

F.A.I. RTE.	SECTION	COUNTY	TOTAL SHEETS	SHEET NO.
64	82-1-RAILS	ST. CLAIR	83	31
CONTRACT NO. 76F71				
FED. ROAD DIST. NO.		ILLINOIS FED. AID PROJECT		



TENG & ASSOCIATES, INC.  
ENGINEERS/ARCHITECTS/PLANNERS  
CHICAGO, ILLINOIS