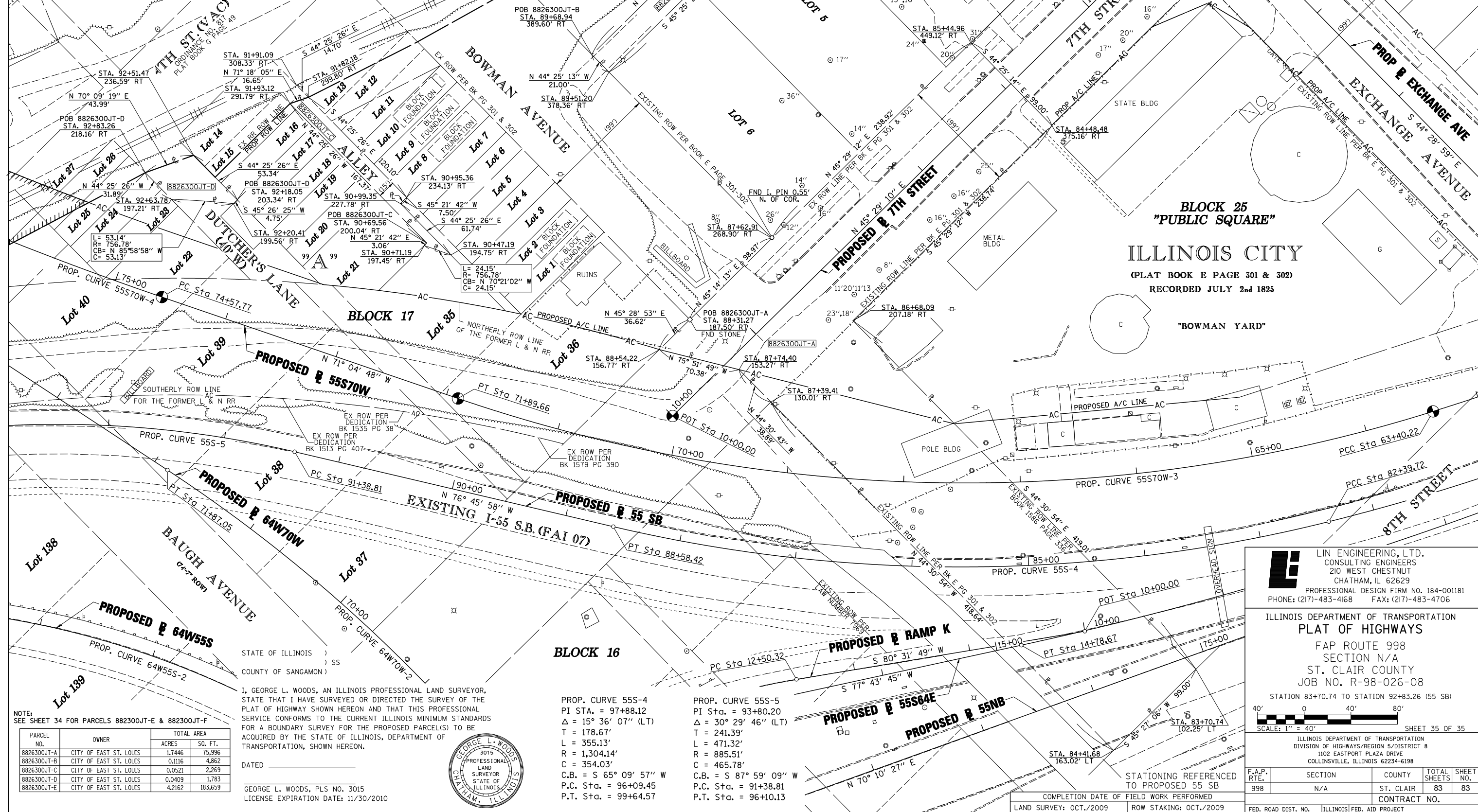


"A"  
 FISCHER SCHEIN CO'S SUBD  
 OF LOTS 33 & 34 AND PARTS  
 OF LOTS 35, 39, & 40 OF BLOCK 17  
 ILLINOIS CITY EAST ST. LOUIS ILLS.

PLAT BOOK P PAGE 56  
 RECORDED 27th JULY 1910

BLOCK 25  
 "PUBLIC SQUARE"  
 ILLINOIS CITY  
 (PLAT BOOK E PAGE 301 & 302)  
 RECORDED JULY 2nd 1825



**LE** LIN ENGINEERING, LTD.  
 CONSULTING ENGINEERS  
 210 WEST CHESTNUT  
 CHATHAM, IL 62629  
 PROFESSIONAL DESIGN FIRM NO. 184-001181  
 PHONE: (217)-483-4168 FAX: (217)-483-4706

ILLINOIS DEPARTMENT OF TRANSPORTATION  
 PLAT OF HIGHWAYS  
 FAP ROUTE 99B  
 SECTION N/A  
 ST. CLAIR COUNTY  
 JOB NO. R-98-026-08  
 STATION 83+70.74 TO STATION 92+83.26 (55 SB)

F.A.P. RTE.	SECTION	COUNTY	TOTAL SHEETS	SHEET NO.
99B	N/A	ST. CLAIR	83	83
FED. ROAD DIST. NO.			ILLINOIS FED. AID PROJECT	

STATE OF ILLINOIS )  
 COUNTY OF SANGAMON )  
 I, GEORGE L. WOODS, AN ILLINOIS PROFESSIONAL LAND SURVEYOR,  
 STATE THAT I HAVE SURVEYED OR DIRECTED THE SURVEY OF THE  
 PLAT OF HIGHWAY SHOWN HEREON AND THAT THIS PROFESSIONAL  
 SERVICE CONFORMS TO THE CURRENT ILLINOIS MINIMUM STANDARDS  
 FOR A BOUNDARY SURVEY FOR THE PROPOSED PARCEL(S) TO BE  
 ACQUIRED BY THE STATE OF ILLINOIS, DEPARTMENT OF  
 TRANSPORTATION, SHOWN HEREON.



DATED \_\_\_\_\_  
 GEORGE L. WOODS, PLS NO. 3015  
 LICENSE EXPIRATION DATE: 11/30/2010

PROP. CURVE 55S-4  
 PI Sta. = 97+88.12  
 $\Delta = 15^\circ 36' 07''$  (LT)  
 T = 178.67'  
 L = 355.13'  
 R = 1,304.14'  
 C = 354.03'  
 C.B. = S 65° 09' 57" W  
 P.C. Sta. = 96+09.45  
 P.T. Sta. = 99+64.57

PROP. CURVE 55S-5  
 PI Sta. = 93+80.20  
 $\Delta = 30^\circ 29' 46''$  (LT)  
 T = 241.39'  
 L = 471.32'  
 R = 885.51'  
 C = 465.78'  
 C.B. = S 87° 59' 09" W  
 P.C. Sta. = 91+38.81  
 P.T. Sta. = 96+10.13

NOTE:  
 SEE SHEET 34 FOR PARCELS 882300JT-E & 882300JT-F

PARCEL NO.	OWNER	TOTAL AREA
		ACRES SO. FT.
8826300JT-A	CITY OF EAST ST. LOUIS	1.7446 75,996
8826300JT-B	CITY OF EAST ST. LOUIS	0.1116 4,862
8826300JT-C	CITY OF EAST ST. LOUIS	0.0521 2,269
8826300JT-D	CITY OF EAST ST. LOUIS	0.0409 1,783
8826300JT-E	CITY OF EAST ST. LOUIS	4.2162 183,659

PLOT DATE = 10/19/2009  
 FILE NAME = \$FILEL\$  
 PLOT SCALE = \$SCALE\$  
 USER NAME = \$USER\$