

F.A.S. RTE.	SECTION	COUNTY	TOTAL SHEETS	SHEET NO.
2869	2B-1	JEFFERSON	36	1
FED. ROAD DIST. NO.	ILLINOIS	CONTRACT NO. 78148		

STATE OF ILLINOIS
DEPARTMENT OF TRANSPORTATION
DIVISION OF HIGHWAYS

**PROPOSED
HIGHWAY PLANS**

F.A.S. ROUTE 2869 (IL ROUTE 37)
SECTION 2B-1
PROJECT ACRS-2869(106)
JEFFERSON COUNTY
C-99-002-10

**STRUCTURE REPLACEMENT
OVER UNNAMED STREAM**

INDEX OF SHEETS

- | SHEET NO. | DESCRIPTION |
|-----------|-------------------------------------|
| 1. | COVER SHEET |
| 2. | GENERAL NOTES AND HIGHWAY STANDARDS |
| 3.-7. | SUMMARY OF QUANTITIES |
| 8. | TYPICAL SECTIONS |
| 9.-10. | SCHEDULES OF QUANTITIES |
| 11. | ALIGNMENT TIES & BENCHMARKS |
| 12.-13. | PLAN AND PROFILE |
| 14. | STAGE I CONSTRUCTION |
| 15. | STAGE II CONSTRUCTION |
| 16. | EROSION CONTROL PLAN |
| 17. | PAVEMENT MARKING PLAN |
| 18. | PAVED SHOULDER LAYOUT |
| 19. | GUARDRAIL LAYOUT |
| 20. | WIDE LOAD DETOUR |
| 21. | STANDARD DETAILS DISTRICT 9 |
| 22.-28. | STRUCTURE PLANS |
| 29.-30. | SOIL BORINGS |
| 31.-36. | CROSS SECTIONS |

UTILITIES

COMMUNICATION
AT&T
210 NORTH LOCUST
CENTRALIA, IL 62801
ATTN: TODD ISAAC

GAS & ELECTRIC
AMEREN I.P.
P.O. BOX 868
MT. VERNON, IL 62864
ATTN: MIKE TATLOCK

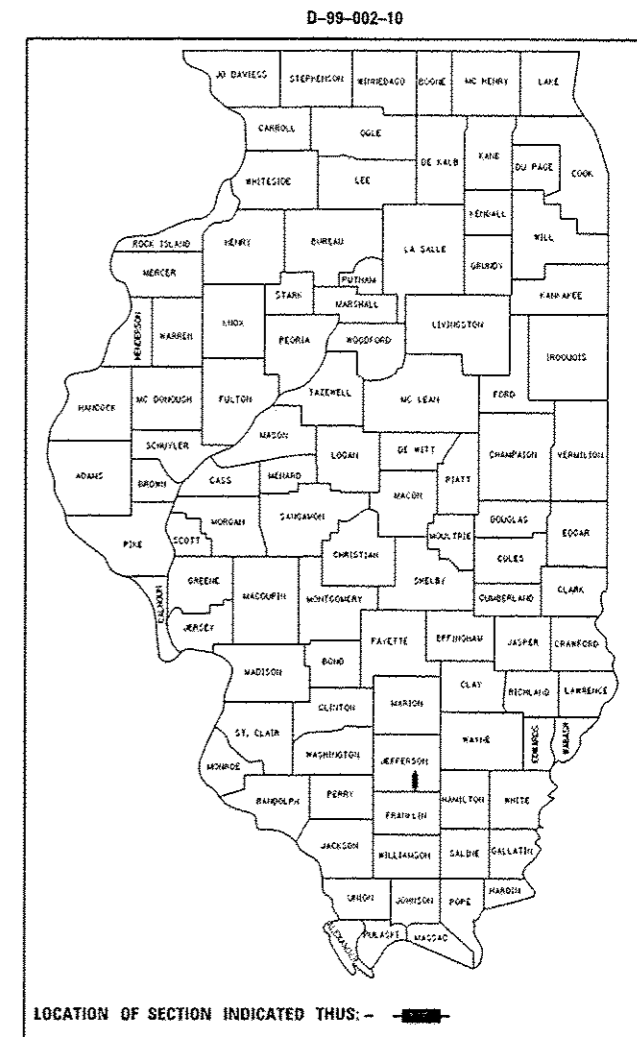
WATER & SEWER
VILLAGE OF BONNIE
WATER & SEWER
270 SOUTH RAILROAD STREET
BONNIE, IL 62816
ATTN: JAMES PARKHILL

FIBER OPTIC TRANSMISSION
WINDSTREAM KDL
RR2 BOX 93A
DAHLGREN, IL 62828
ATTN: RICK CUNICO

FIBER OPTIC COMMUNICATION
CLEARWAVE COMMUNICATION
2 NORTH VINE STREET
HARRISBURG, IL 62946
ATTN: AARON CARIAN

WATER
RENO LAKE INTERCITY WATER
11231 MARCUM BRANCK RD.
BENTON, IL 62812
ATTN: KEITH THOMASON

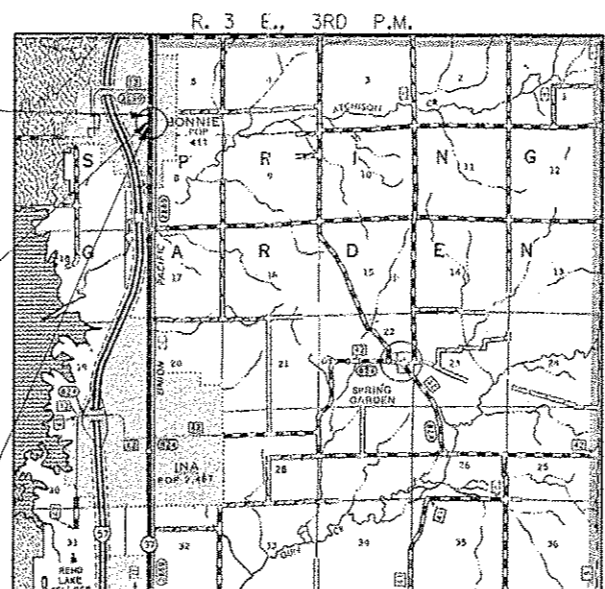
COMMUNICATION
FRONTIER COMMUNICATION
801 W JACKSON
ALAMONT, IL 62411
ATTN: ROD ELLER



LOCATION OF SECTION INDICATED THUS: - [shaded box] -

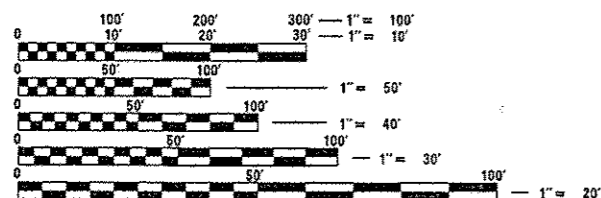
TRAFFIC DATA

FUNCTIONAL CLASSIFICATION:	MAJOR COLLECTOR (NON URBAN)
DESIGN SPEED:	55 MPH
POSTED SPEED:	55 MPH
ADT:	3740 (2008)
PV:	94.46%
TRUCKS:	5.54%



LOCATION MAP

APPROXIMATE SCALE: 1" = 1 MILE
NET LENGTH OF PROJECT = 380 FEET = 0.072 MILES
GROSS LENGTH OF PROJECT = 380 FEET = 0.072 MILES
ROADWAY LENGTH = 380 FEET = 0.072 MILES



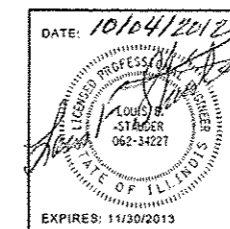
SPRING GARDEN TOWNSHIP

FULL SIZE PLANS HAVE BEEN PREPARED USING STANDARD ENGINEERING SCALES. REDUCED SIZED PLANS WILL NOT CONFORM TO STANDARD SCALES. IN MAKING MEASUREMENTS ON REDUCED PLANS, THE ABOVE SCALES MAY BE USED.

J.U.L.I.E.
JOINT UTILITY LOCATION INFORMATION FOR EXCAVATION
1-800-892-0123
OR 811

HAMPTON, LENZINI AND RENWICK, INC.
CIVIL ENGINEERS - STRUCTURAL ENGINEERS - LAND SURVEYORS
3085 STEVENSON DRIVE, SUITE 201
SPRINGFIELD, ILLINOIS 62703
217.546.3400 www.hlrengineering.com

164-000999
ILLINOIS PROFESSIONAL DESIGN FIRM LS / PE / SE CORPORATION



STATE OF ILLINOIS
DEPARTMENT OF TRANSPORTATION
DIVISION OF HIGHWAYS

SUBMITTED: *July 16, 2012*
Orhan Osman
DEPUTY DIRECTOR OF HIGHWAYS, REGION ENGINEER

Dec 7, 2012
John D. Baranzelli, PE, Inc.
ENGINEER OF DESIGN AND ENVIRONMENT

Dec 7, 2012
William R. Frey, Inc.
DIRECTOR OF HIGHWAYS, CHIEF ENGINEER

**PRINTED BY THE AUTHORITY
OF THE STATE OF ILLINOIS**

PROJECT ENGINEER: DAVID PICHE (618) 351-5227

CONTRACT NO. 78148