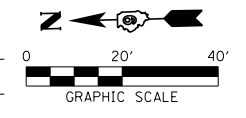
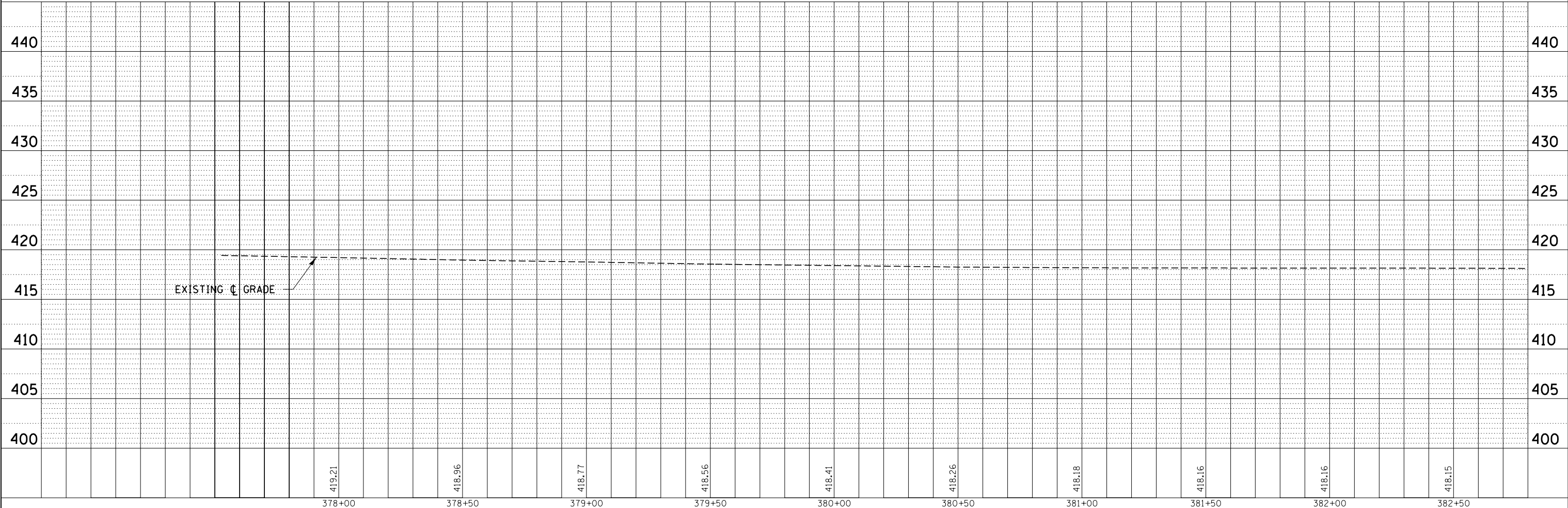
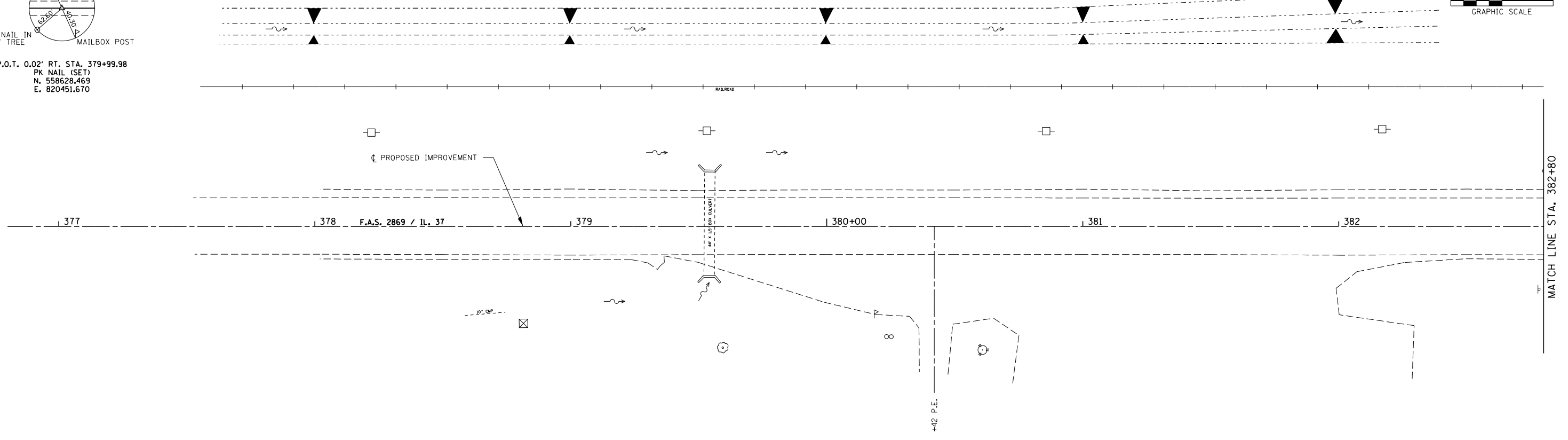


PK NAIL IN POWER POLE
 PK NAIL IN 36" TREE
 MAILBOX POST
 P.O.T. 0.02' RT. STA. 379+99.98
 PK NAIL (SET)
 N. 558628.469
 E. 820451.670



PLAN	SURVEYED	DATE
	PLOTTED	
	ALIGNED	
	CHECKED	
	FILED	
	CADD FILE NAME	
NOTE BOOK NO.		

PROFILE	SURVEYED	DATE
	PLOTTED	
	GRADES CHECKED	
	STRUCTURE NOTATIONS CHECKED	
NOTE BOOK NO.		



FILE NAME = 0410092-sht-pp1.dgn	USER NAME = \$USER*	DESIGNED - L.F.S.	REVISED -	STATE OF ILLINOIS DEPARTMENT OF TRANSPORTATION	PLAN & PROFILE IL 37	F.A.S.	SECTION	COUNTY	TOTAL SHEETS	SHEET NO.
HAMPTON, LENZINI AND RENWICK, INC. 3085 STEVENSON DRIVE, SUITE 201 SPRINGFIELD, ILLINOIS 62765 ILLINOIS PROFESSIONAL DESIGN FIRM LS / PE / SE CORP. 184.000959		DRAWN - T.W.K.	REVISED -			2869	2B-1	JEFFERSON	36	12
PLOT SCALE = *SCALE*		CHECKED - J.W.F.	REVISED -			CONTRACT NO.				
PLOT DATE = 10/4/2012		DATE - 10/04/12	REVISED -			ILLINOIS FED. AID PROJECT				