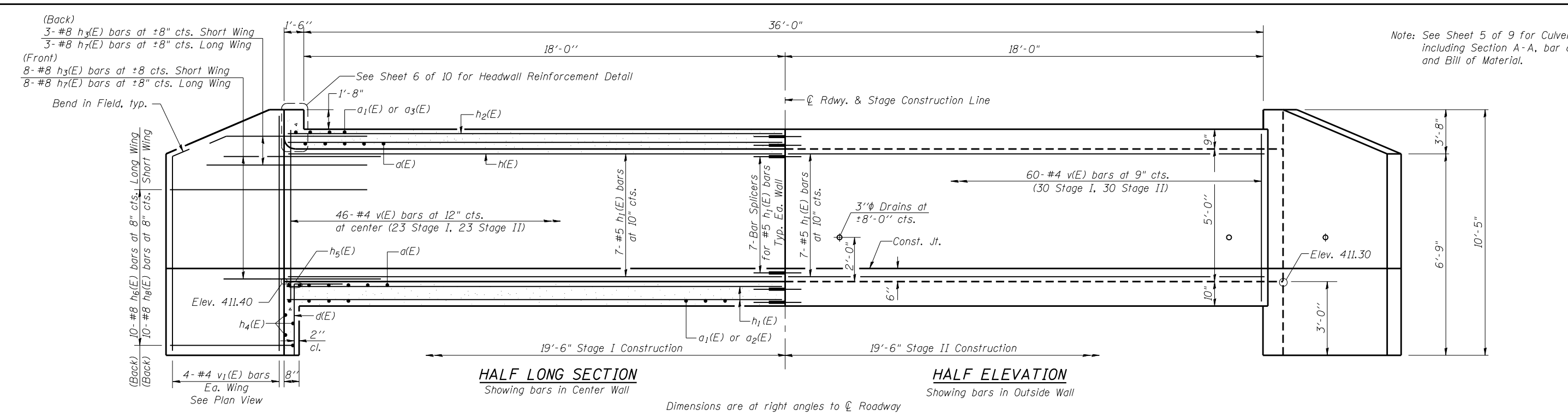


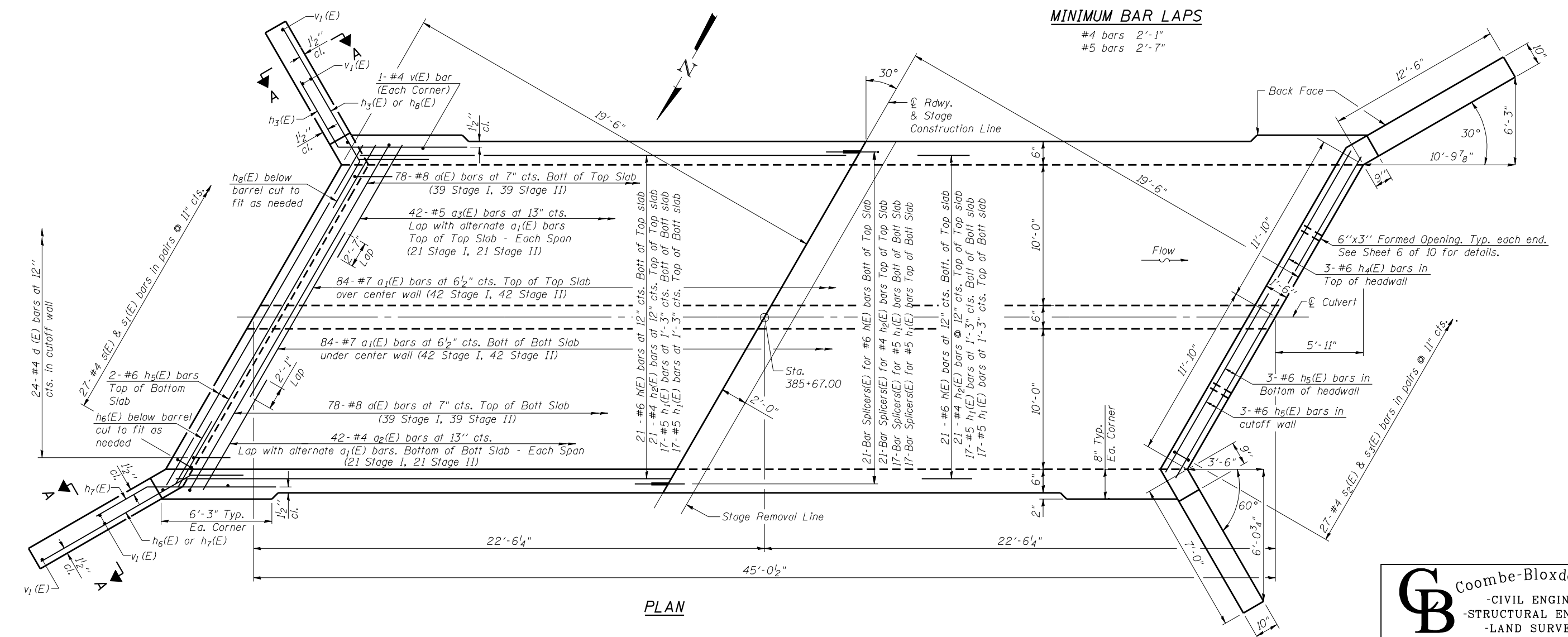
Note: See Sheet 5 of 9 for Culvert Details, including Section A-A, bar details and Bill of Material.



Dimensions are at right angles to C Roadway

MINIMUM BAR LAPS

- #4 bars 2'-1"
- #5 bars 2'-7"



PLAN

FILE NAME =
... \0412019-78148-004-PLN.dgn

| | | |
|---------------------------------|-------------|----------|
| USER NAME = .CFC. | DESIGNED GB | REVISD - |
| CHECKED RM | CHECKED RM | REVISD - |
| PLOT SCALE = 0:2.0000 '1' / IN. | DRAWN MML | REVISD - |
| PLOT DATE = 11/14/2012 | CHECKED MCB | REVISD - |

**STATE OF ILLINOIS
DEPARTMENT OF TRANSPORTATION**

**CULVERT PLAN
STRUCTURE NO. 041-2019**

SHEET NO. 4 OF 9 SHEETS

CB Coombe-Bloxdorf P.C.
- CIVIL ENGINEERS -
- STRUCTURAL ENGINEERS -
- LAND SURVEYORS -
Design Firm License No. 184-002703

| F.A. RTE. | SECTION | COUNTY | TOTAL SHEETS | SHEET NO. |
|-----------|---------|-----------|--------------|-----------|
| 2869 | 2B-1 | JEFFERSON | 36 | 25 |

CONTRACT NO. 78148
ILLINOIS FED. AID PROJECT