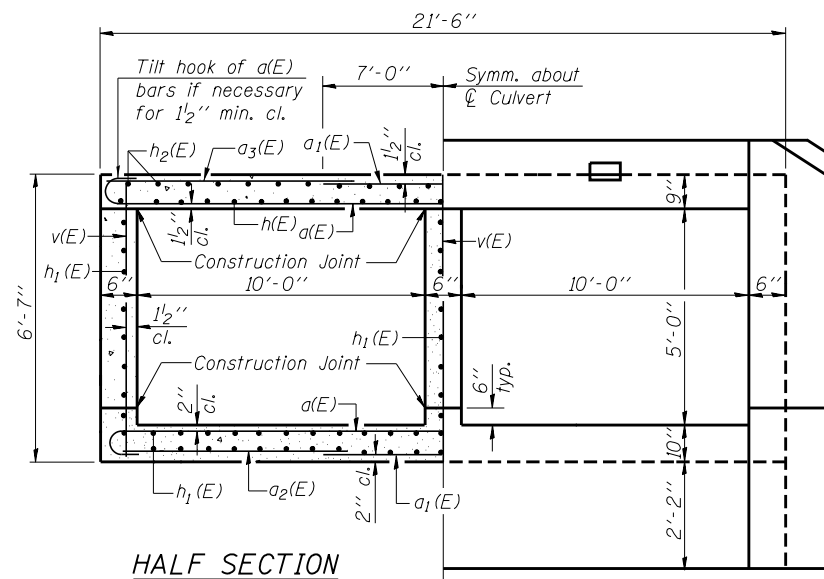


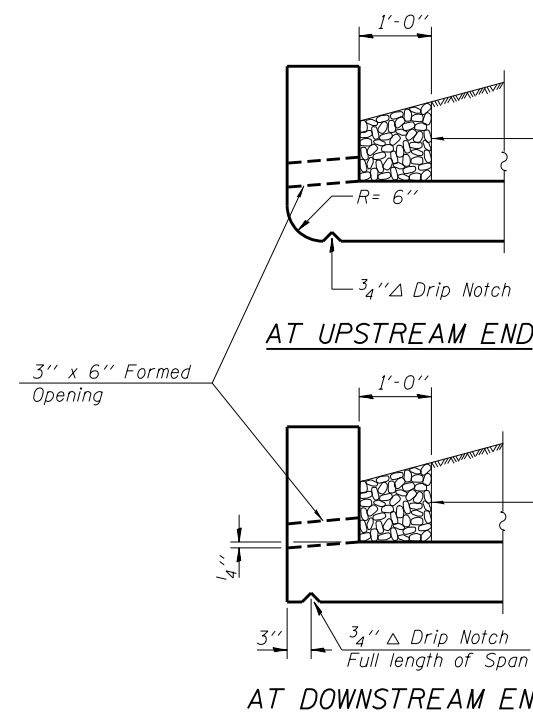
SECTION A-A



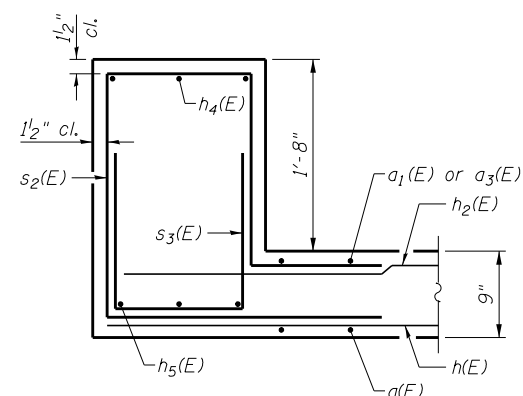
HALF SECTION THRU BARREL

HALF END ELEVATION

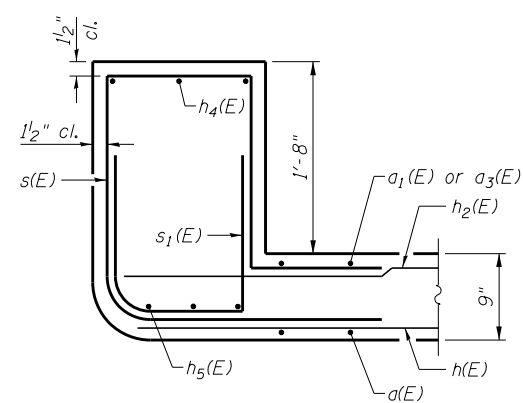
Note:  
A distance of half the length of the wingwall but not less than six feet of the barrel shall be poured monolithically with the wingwalls.



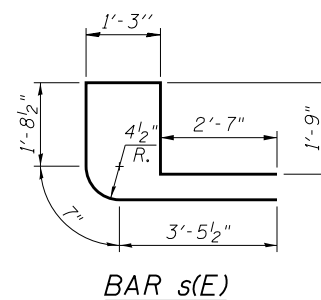
DRAIN DETAIL



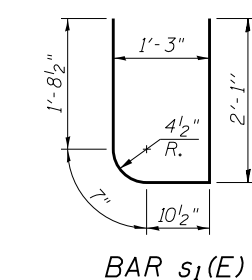
WEST HEADWALL REINFORCEMENT DETAIL



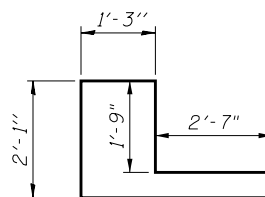
EAST HEADWALL REINFORCEMENT DETAIL



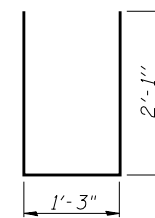
BAR s(E)



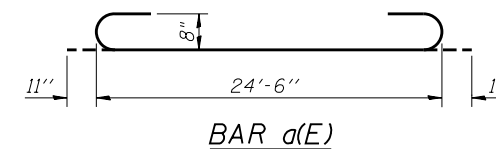
BAR s1(E)



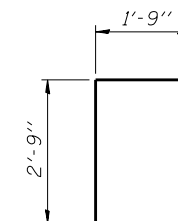
BAR s2(E)



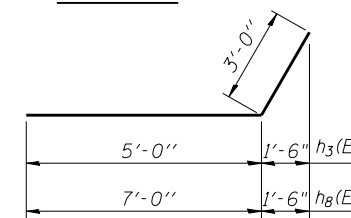
BAR s3(E)



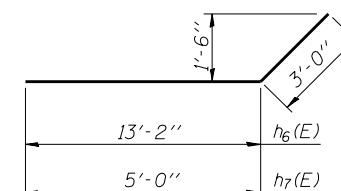
BAR d(E)



BAR d(E)



BARS h3(E) & h8(E)



BARS h6(E) & h7(E)

BILL OF MATERIAL

Bar	No.	Size	Length	Shape
d(E)	156	#8	26'-4"	U
a1(E)	168	#7	14'-0"	—
a2(E)	84	#4	7'-3"	—
a3(E)	84	#5	7'-9"	—
d(E)	48	#4	4'-6"	L
h(E)	42	#6	22'-2"	—
h1(E)	110	#5	22'-2"	—
h2(E)	42	#4	22'-2"	—
h3(E)	22	#8	8'-0"	—
h4(E)	6	#6	22'-6"	—
h5(E)	14	#6	24'-6"	—
h6(E)	20	#8	16'-2"	—
h7(E)	22	#8	8'-0"	—
h8(E)	20	#8	10'-0"	—
s(E)	27	#5	11'-4"	L
s1(E)	27	#5	5'-3"	U
s2(E)	27	#5	11'-6"	L
s3(E)	27	#5	5'-5"	U
v(E)	170	#4	6'-3"	—
v1(E)	16	#4	10'-1"	—
Concrete Box Culverts			Cu. Yd.	88.1
Reinforcement Bars, Epoxy Coated			Pound	26,360
Bar Splicers			Each	97

FILE NAME = 0412019-78148-005-DET.dgn	USER NAME = *USER*	DESIGNED GB	REVISED -
PLOT SCALE = *SCALE*	PLOT DATE = 10/4/2012	CHECKED RM	REVISED -
CB PROJECT NO. 07055-5		DRAWN MML	REVISED -
		CHECKED MCB	REVISED -

STATE OF ILLINOIS  
DEPARTMENT OF TRANSPORTATION

CULVERT DETAILS  
STRUCTURE NO. 041-2019

SHEET NO. 5 OF 9 SHEETS

**CB** Coombe-Bloxdorf P.C.  
- CIVIL ENGINEERS -  
- STRUCTURAL ENGINEERS -  
- LAND SURVEYORS -  
Design Firm License No. 184-002703

F.A. RTE.	SECTION	COUNTY	TOTAL SHEETS	SHEET NO.
2869	2B-1	JEFFERSON	36	26

CONTRACT NO. 78148  
ILLINOIS FED. AID PROJECT