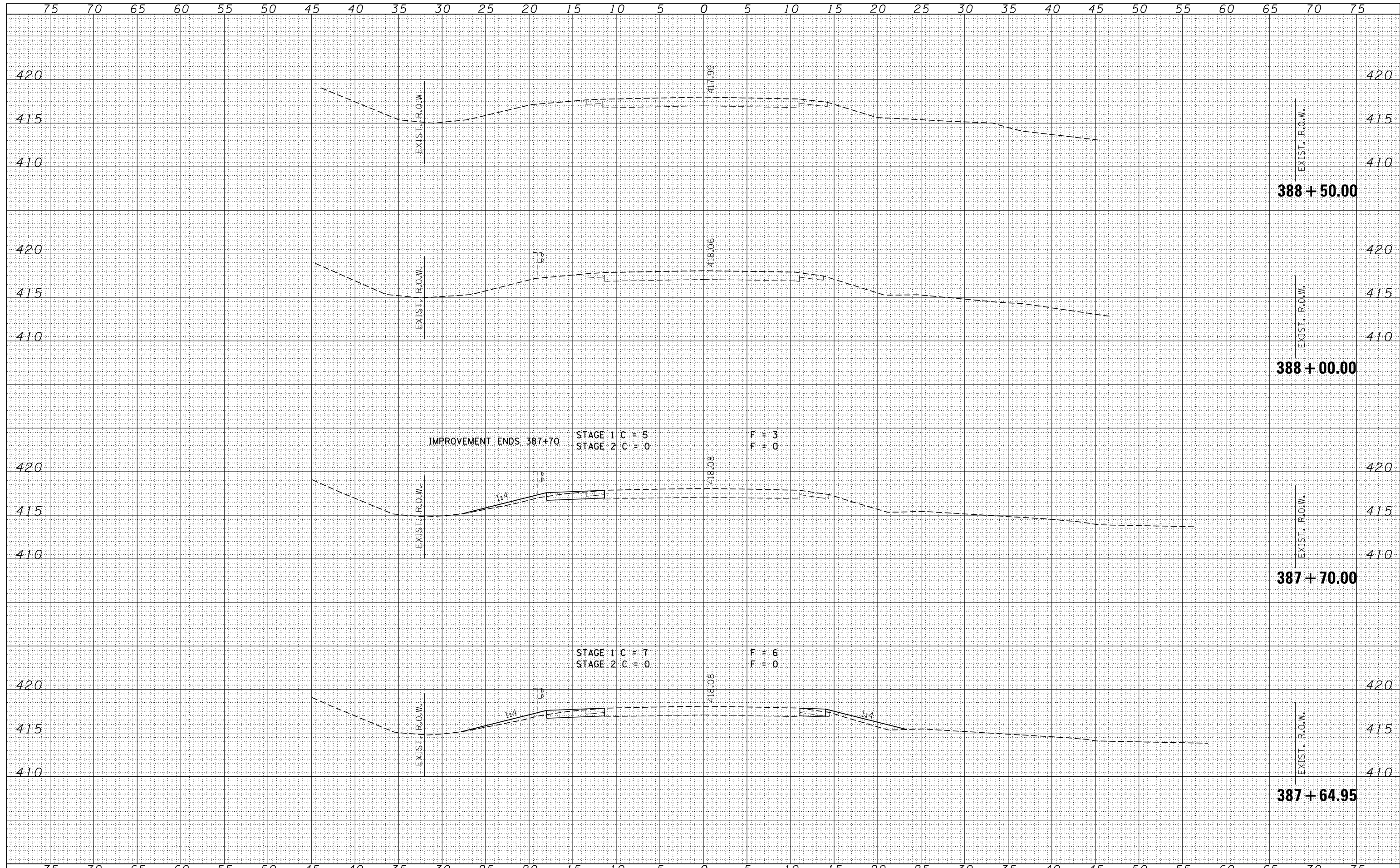


DATE	
BY	
FINAL SURVEY	
SURVEYED	
PLOTTED	
TEMPLATE	
NOTE BOOK	
AREAS CHECKED	
NO.	

DATE	
BY	
ORIGINAL SURVEY	
SURVEYED	
PLOTTED	
TEMPLATE	
NOTE BOOK	
AREAS CHECKED	
NO.	



FILE NAME = 0410092-sht-xs.dgn	USER NAME = *USERS*	DESIGNED - L.F.S.	REVISED -	STATE OF ILLINOIS DEPARTMENT OF TRANSPORTATION	CROSS SECTIONS IL. 37	F.A.S.	SECTION	COUNTY	TOTAL SHEETS	SHEET NO.
HAMPTON, LENZINI AND RENWICK, INC.	DRAWN - TWK	REVISED -	2869			2B-1	JEFFERSON	36	36	
3885 STEVENSON DRIVE, SUITE 201 SPRINGFIELD, ILLINOIS 62703 ILLINOIS PROFESSIONAL DESIGN FIRM L.S. / P.E. / S.E. CORP. 184.000958	CHECKED - J.W.F.	REVISED -	CONTRACT NO. 78148							
PLOT SCALE = *SCALE*	DATE - 10/04/12	REVISED -	FED. ROAD DIST. NO. ILLINOIS FED. AID PROJECT							
PLOT DATE = 10/4/2012				SCALE: 5H:5V	SHEET NO. OF SHEETS	STA. 387+64.95 TO STA. 388+00.00				