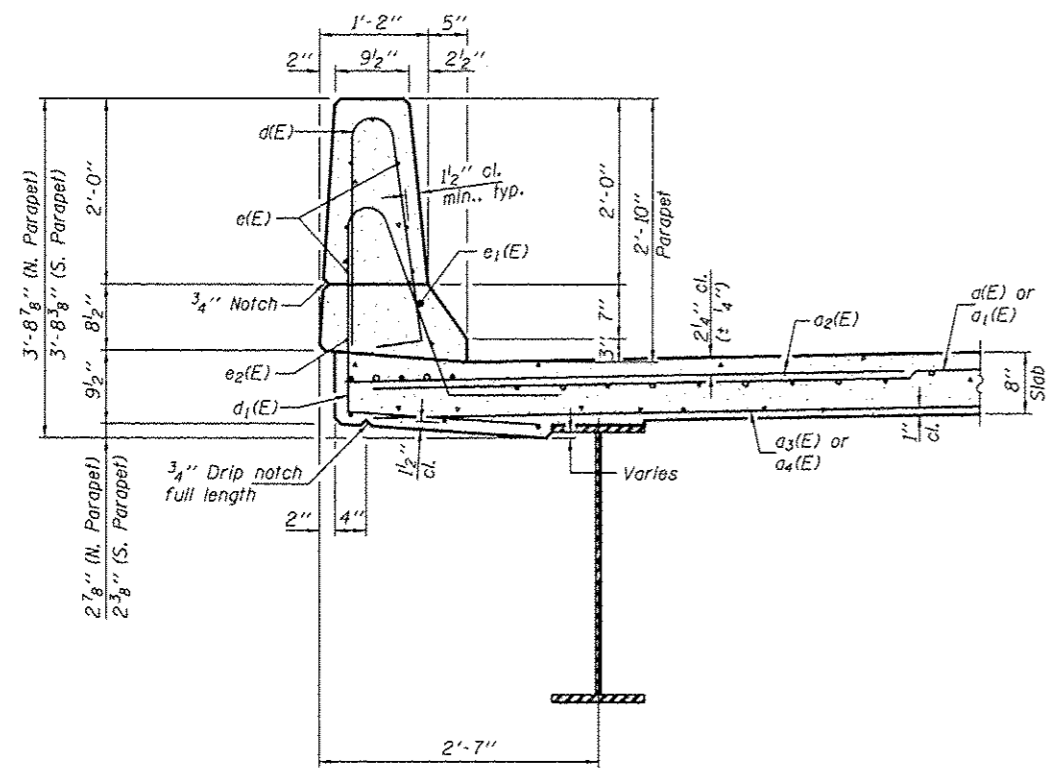


**MIN. BAR LAPS**  
 (Parapet)  
 #4 bar = 2'-0"  
 #8 bar = 5'-2"

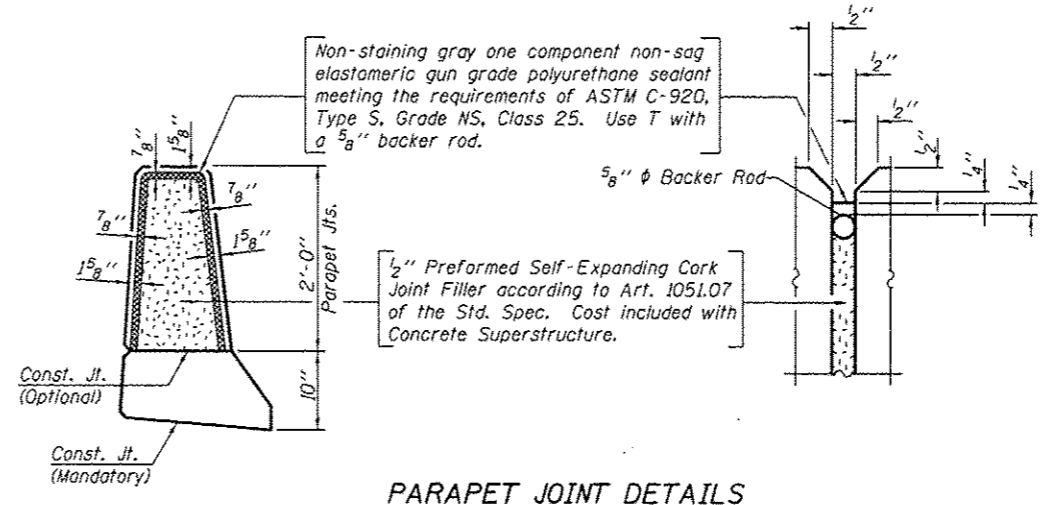
**SUPERSTRUCTURE  
 BILL OF MATERIAL**

| Bar                              | No. | Size | Length   | Shape |
|----------------------------------|-----|------|----------|-------|
| d(E)                             | 163 | #5   | 15'-4"   | —     |
| a1(E)                            | 163 | #5   | 22'-11"  | —     |
| a2(E)                            | 324 | #6   | 6'-6"    | —     |
| a3(E)                            | 123 | #5   | 22'-1"   | —     |
| a4(E)                            | 123 | #5   | 14'-6"   | —     |
| a5(E)                            | 2   | #5   | 26'-2"   | —     |
| a6(E)                            | 2   | #5   | 17'-6"   | —     |
| a7(E)                            | 2   | #5   | 25'-3"   | —     |
| a8(E)                            | 2   | #5   | 16'-6"   | —     |
| b(E)                             | 172 | #5   | 27'-10"  | —     |
| b1(E)                            | 185 | #5   | 23'-0"   | —     |
| d(E)                             | 224 | #5   | 5'-7"    | L     |
| d1(E)                            | 224 | #5   | 7'-3"    | L     |
| e(E)                             | 84  | #4   | 16'-7"   | —     |
| e1(E)                            | 8   | #8   | 29'-4"   | —     |
| e2(E)                            | 10  | #4   | 22'-0"   | —     |
| m(E)                             | 10  | #6   | 16'-11"  | —     |
| m1(E)                            | 10  | #6   | 25'-7"   | —     |
| m2(E)                            | 12  | #6   | 9'-10"   | —     |
| m3(E)                            | 8   | #6   | 7'-9"    | —     |
| m4(E)                            | 4   | #6   | 9'-2"    | —     |
| m5(E)                            | 4   | #6   | 6'-11"   | —     |
| m6(E)                            | 12  | #6   | 6'-2"    | —     |
| m7(E)                            | 4   | #6   | 2'-7"    | —     |
| s(E)                             | 88  | #5   | 7'-5"    | J     |
| s1(E)                            | 74  | #4   | 11'-9"   | J     |
| v(E)                             | 80  | #5   | 3'-10"   | L     |
| Reinforcement Bars, Epoxy Coated |     |      | Pound    | 31390 |
| Concrete Superstructure          |     |      | Cu. Yds. | 161.4 |

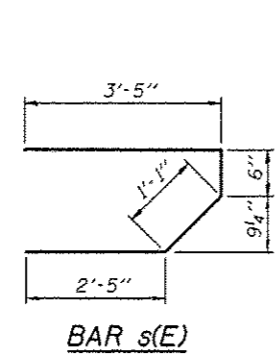
Bars indicated thus 1 x 3-#8 etc. indicates 1 line of bars with 3 lengths per line.



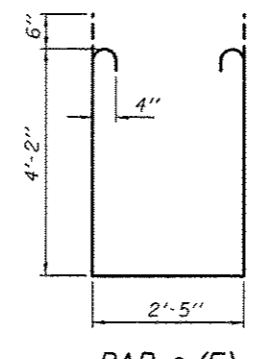
SECTION THRU PARAPET



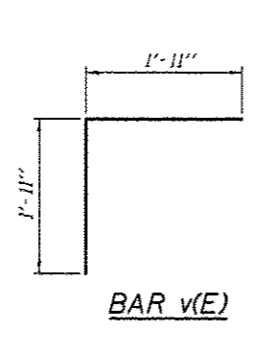
PARAPET JOINT DETAILS



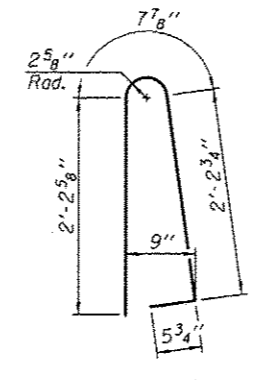
BAR s(E)



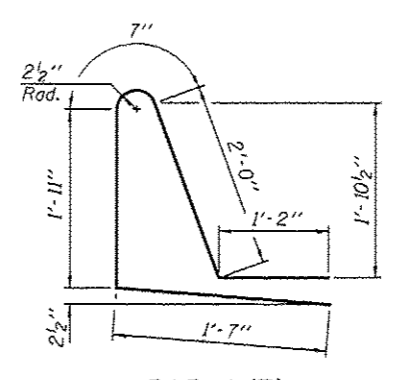
BAR s1(E)



BAR v(E)



BAR d(E)



BAR d1(E)

1 SHEET ADDED 1/4/13

|                              |   |                          |
|------------------------------|---|--------------------------|
| DESIGNED - Michael D. Rolope | EXAMINED - <i>Jaime F. J. [Signature]</i> | DATE - NOVEMBER 21, 2012 |
| CHECKED - Stephen M. Ryan    | ACTING ENGINEER OF BRIDGE DESIGN          |                          |
| DRAWN - h.t. duong           | PASSED - <i>[Signature]</i>               | REVISED                  |
| CHECKED - GRA/SMR            | ACTING ENGINEER OF BRIDGES AND STRUCTURES | REVISED                  |

STATE OF ILLINOIS  
 DEPARTMENT OF TRANSPORTATION

SUPERSTRUCTURE DETAILS  
 STRUCTURE NO. 035-0016

SHEET NO. 10 OF 21 SHEETS

|                           |         |        |              |                    |
|---------------------------|---------|--------|--------------|--------------------|
| F.A.P. RTE.               | SECTION | COUNTY | TOTAL SHEETS | SHEET NO.          |
| 885                       | 11B-1   | HARDIN | 50           | 30                 |
|                           |         |        |              | CONTRACT NO. 78152 |
| ILLINOIS FED. AID PROJECT |         |        |              |                    |