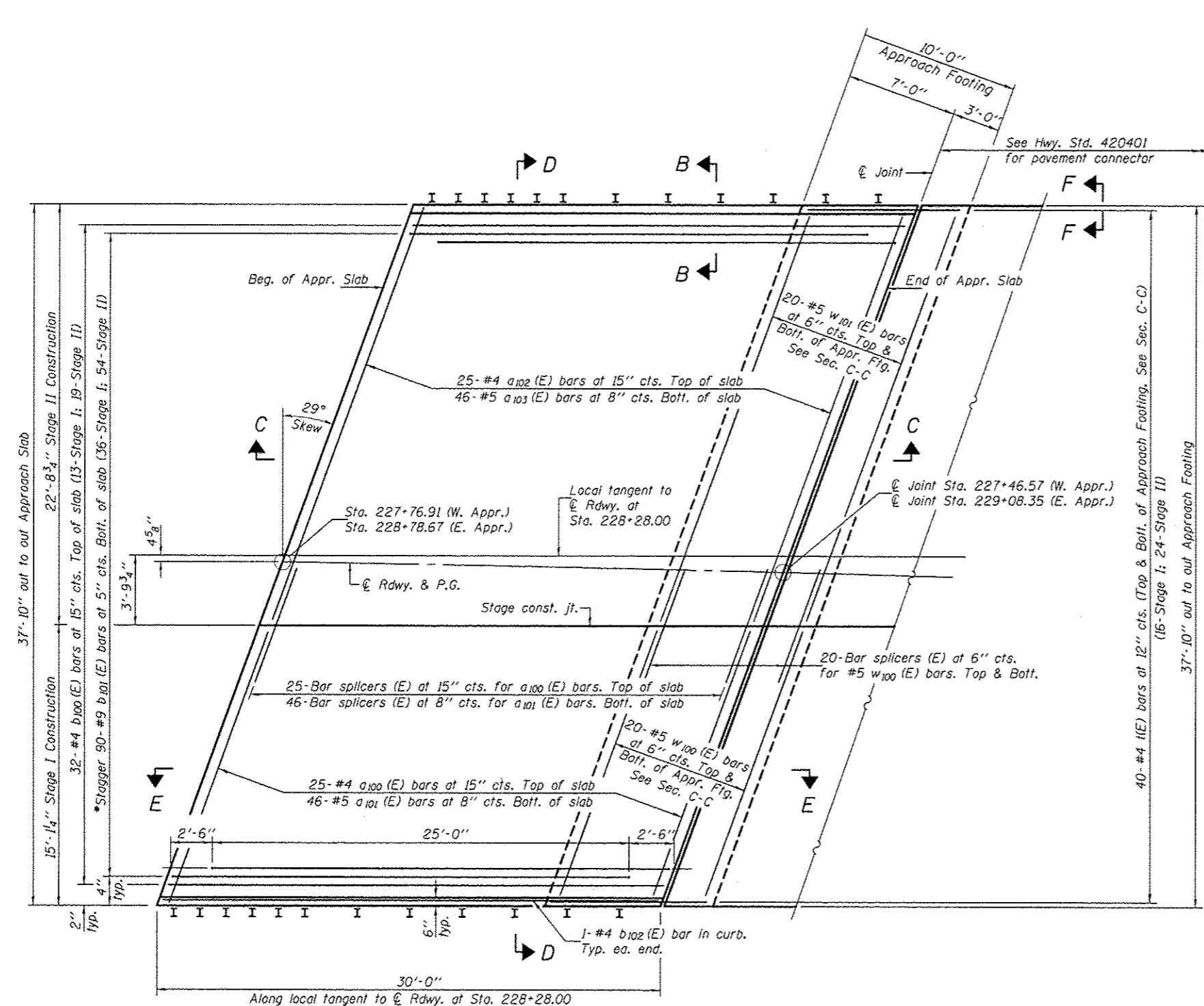
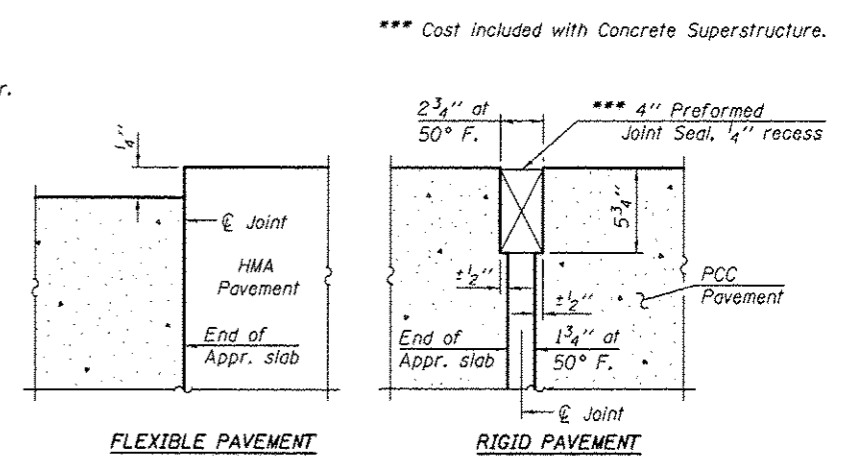
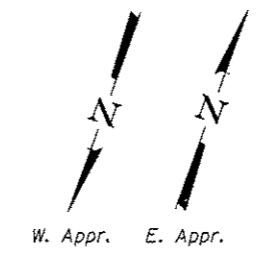


Notes:
 See sheet 13 of 21 for Sections C-C, D-D, & E-E.
 a_{100} (E), a_{101} (E), & w_{100} (E) bar spacings measured along local tangent to C.R. at Sta. 228+28.00.

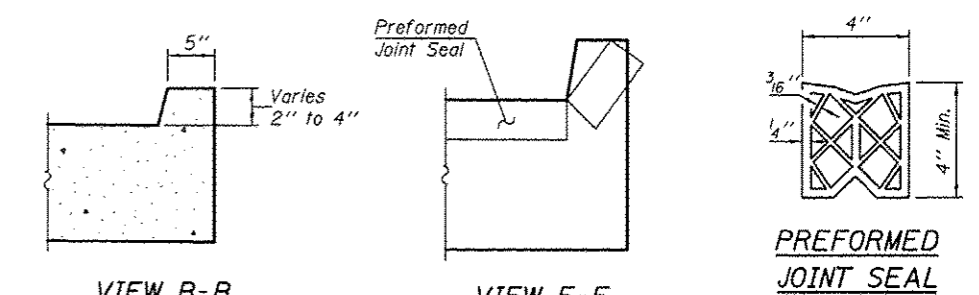


PLAN
 (East Approach shown - West Approach similar by mirror image)

*Tilt #9 b_{101} (E) bars as required to maintain clearance.



DETAIL A

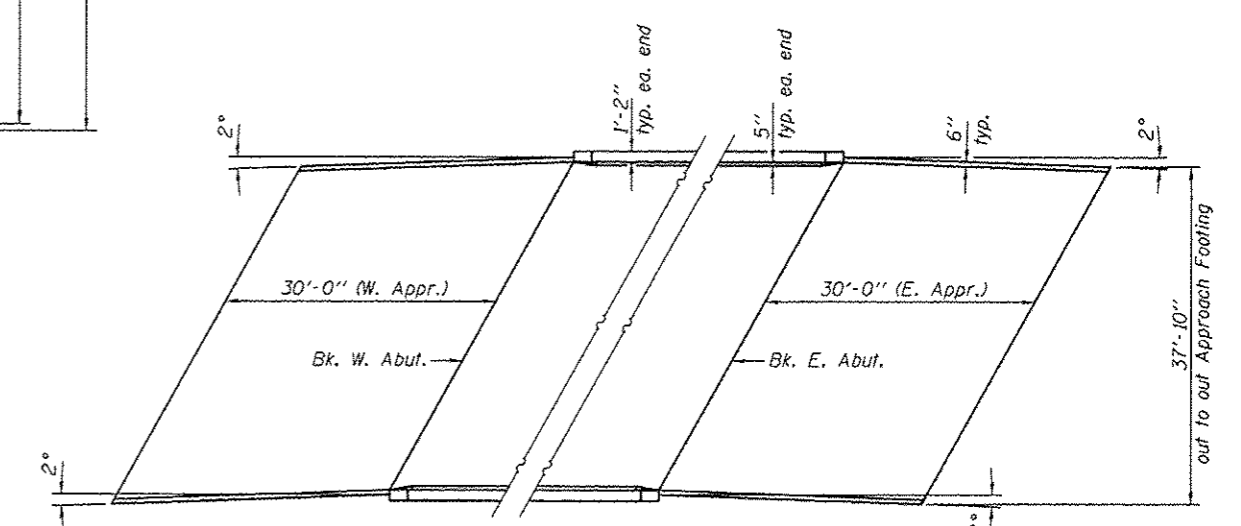


VIEW B-B

VIEW F-F

Angle Preformed Joint Seal at 45° at curbs when req'd for drainage.

PREFORMED JOINT SEAL



SKETCH OF W. & E. APPROACHES

⚠ SHEET ADDED 1-4-13

DESIGNED - Michael D. Rolape	EXAMINED - <i>Joan F. [Signature]</i> ACTING ENGINEER OF BRIDGE DESIGN	DATE - NOVEMBER 21, 2012	STATE OF ILLINOIS DEPARTMENT OF TRANSPORTATION	BRIDGE APPROACH SLAB DETAILS STRUCTURE NO. 035-0016	F.A.P. RTE.	SECTION	COUNTY	TOTAL SHEETS	SHEET NO.
CHECKED - Stephen M. Ryan	PASSED - <i>[Signature]</i> ACTING ENGINEER OF BRIDGES AND STRUCTURES	REVISED			885	11B-1	HARDIN	50	32
DRAWN - h.t. duong		REVISED	SHEET NO. 12 OF 21 SHEETS		CONTRACT NO. 7B152				
CHECKED - GRA/SMR					ILLINOIS FED. AID PROJECT				