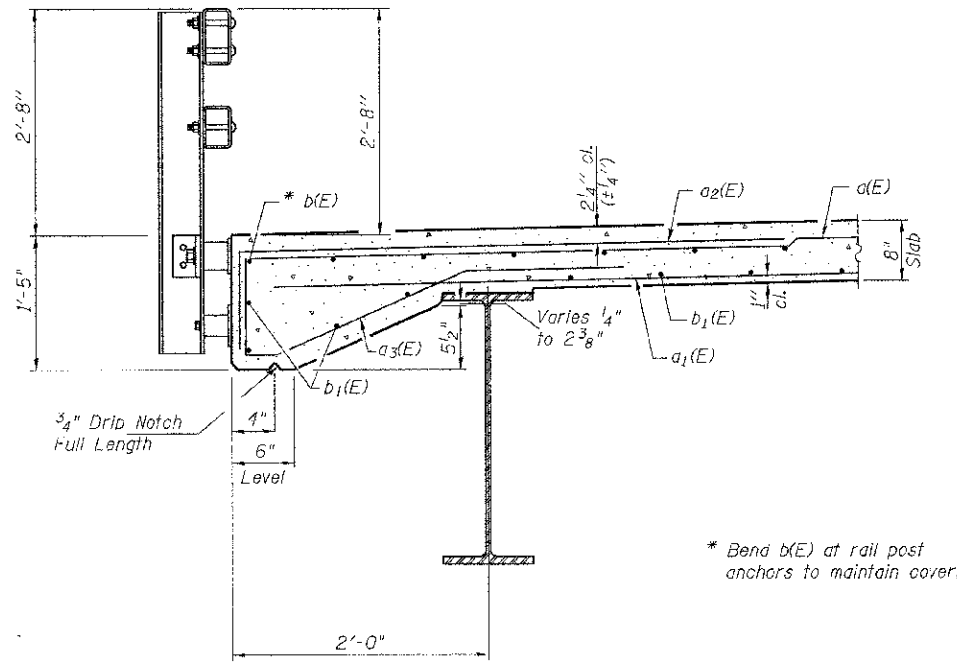
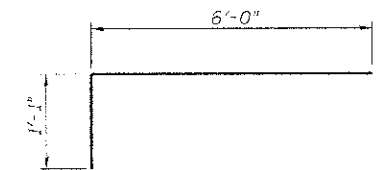


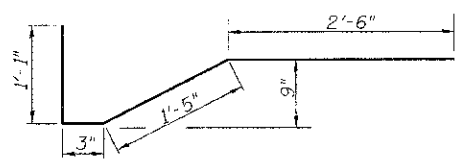
RAIL POST SPACING



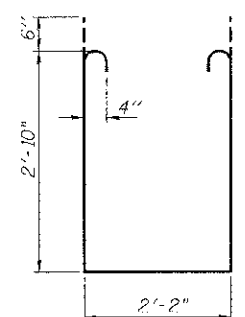
SECTION THRU EDGE OF DECK
See Sheet 8 of 15 for Rail Post Anchor Details



BAR a2(E)



BAR a3(E)



BAR s(E)

SUPERSTRUCTURE
BILL OF MATERIAL

Bar	No.	Size	Length	Shape
a1(F)	125	#5	29'-9"	—
a1(E)	81	#5	29'-9"	—
a2(E)	294	#6	7'-1"	—
a3(F)	126	#5	5'-3"	—
b(E)	93	#5	23'-11"	—
b1(E)	64	#5	34'-8"	—
m(E)	6	#6	29'-9"	—
m1(E)	12	#6	9'-10"	—
m2(E)	4	#6	1'-9"	—
m3(E)	8	#6	6'-3"	—
m4(E)	8	#6	5'-10"	—
s(F)	64	#4	8'-10"	□
Reinforcement Bars, Epoxy Coated			POUND	15,750
Concrete Superstructure			CU YD	71.9

SUPERSTRUCTURE DETAILS
COUNTY HIGHWAY 9 OVER
LOUIS CREEK TRIBUTARY
SEC. 08-00130-02-BR
IROQUOIS COUNTY
STATION 214+96.00

SHEET NO. 6 15 SHEETS	F.A.S. RTE.	SECTION	COUNTY	TOTAL SHEETS	SHEET NO.
	334	08-00130-02-BR	IROQUOIS	27	12
SN 038-3014			CONTRACT NO. 87524		
FED. ROAD DIST. NO. 7 ILLINOIS			FED. AID PROJECT BRS-0334(113)		