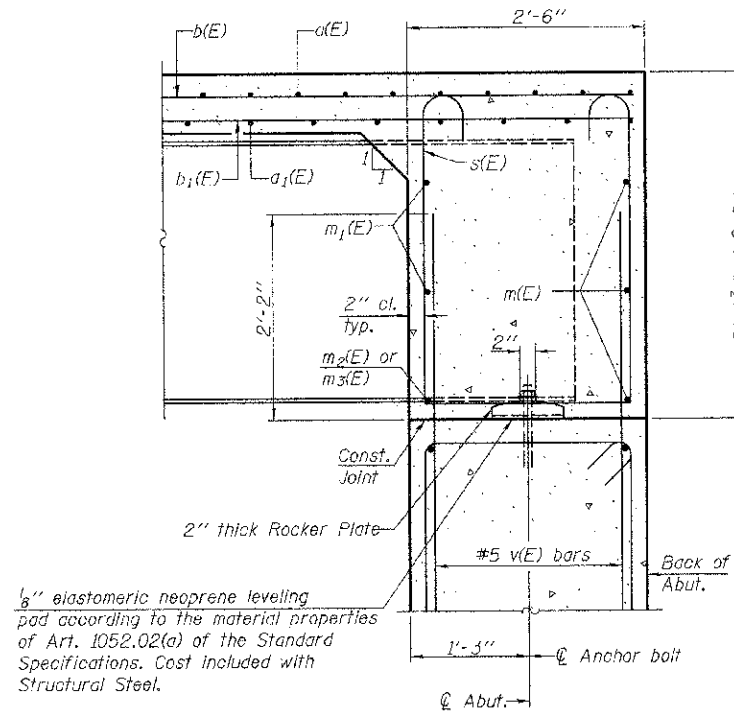


**DIAPHRAGM ELEVATION AT ABUTMENT**

Notes:  
 Reinforcement bars in diaphragm are billed with superstructure on sheet 6 of 15.  
 Concrete in diaphragm is included with Concrete Superstructure on sheet 6 of 15.  
 For detail of bar s(E) see sheet 6 of 15.  
 The s(E) bars shall be placed parallel to the beams. Spacing for these bars shall be at right angles to the beams.  
 For placement of v(E) bars see sheet 11 of 15.

**MIN. BAR LAP**  
 #6 bar = 3'-4"



**SECTION A-A**

**DIAPHRAGM DETAILS**  
**COUNTY HIGHWAY 9 OVER**  
**LOUIS CREEK TRIBUTARY**  
**SEC. 08-00130-02-BR**  
**IROQUOIS COUNTY**  
**STATION 214+96.00**

SHEET NO. 7	F.A.S. RTE.	SECTION	COUNTY	TOTAL SHEETS	SHEET NO.
	334	08-00130-02-BR	IROQUOIS	27	13
15 SHEETS	SN 038-3014		CONTRACT NO. 87524		
FED. ROAD DIST. NO. 7 ILLINOIS		FED. AID PROJECT BRS-0334(113)			