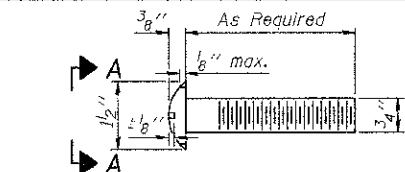
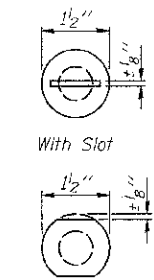


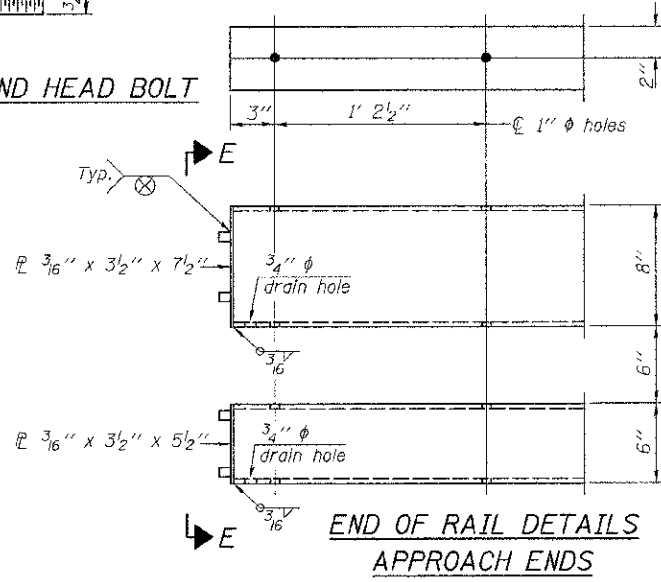
FOR RAIL POST SPACING SEE SH.#6 OF 15.



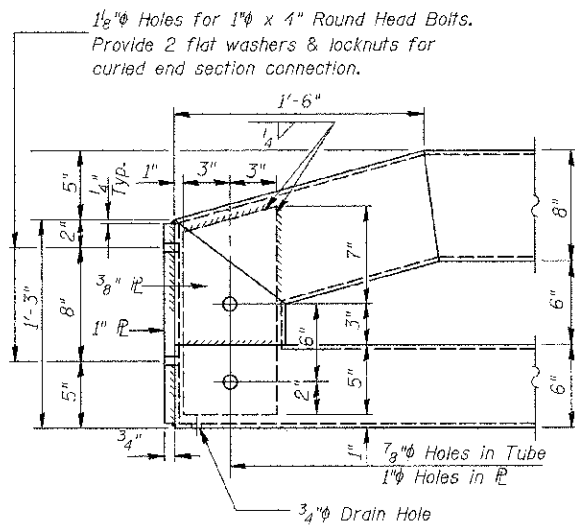
DETAIL OF 3/4"  $\phi$  ROUND HEAD BOLT



VIEW A-A

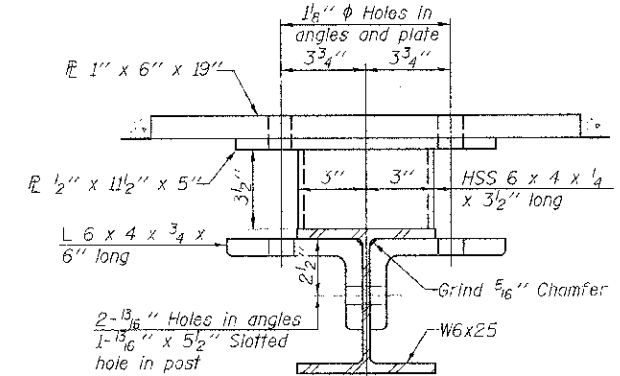


END OF RAIL DETAILS APPROACH ENDS

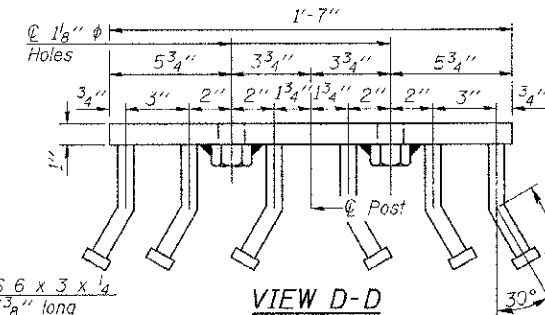


CURLLED END SECTION

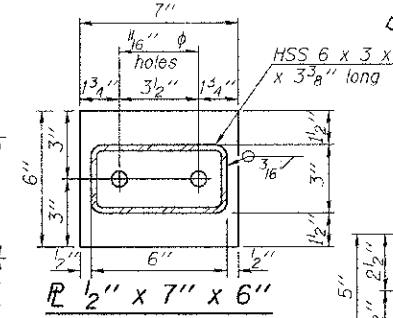
(2 Req'd) Cost Included with Steel Bridge Rail, Type SM (Special). Terminal Markers - Direct Applied shall be placed on end of each Curled End Section. (N.W. & S.E. Corner)



SECTION C-C



VIEW D-D



VIEW E-E

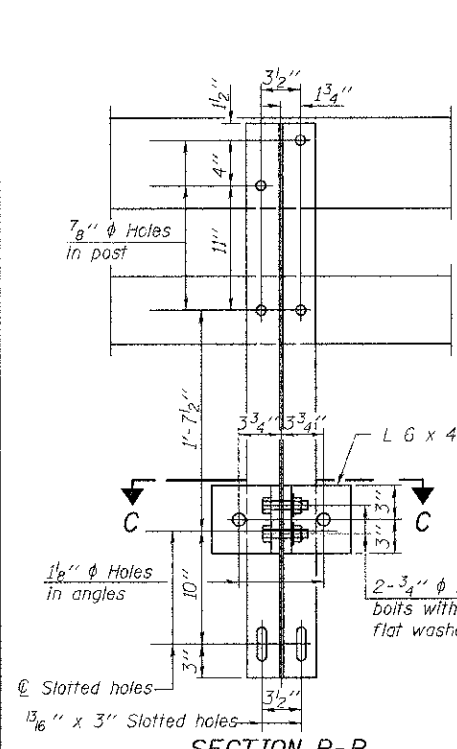
Notes:  
 All field drilled holes shall be coated with an approved zinc rich paint before erection.  
 For multi-span bridges, sufficient 1/2" x 6" x 1'-2" galvanized steel shims shall be provided to align rail between adjacent spans. Cost included with Steel Bridge Rail, Type SM (Special).  
 Steel rail elements shall be galvanized according to Article 509.05 of the Standard Specifications.  
 \*\* The studs of the anchor devices shall be placed below the top reinforcement bars and the outermost longitudinal reinforcement bar shall be placed directly above the studs of the rail post anchor device.

BILL OF MATERIAL

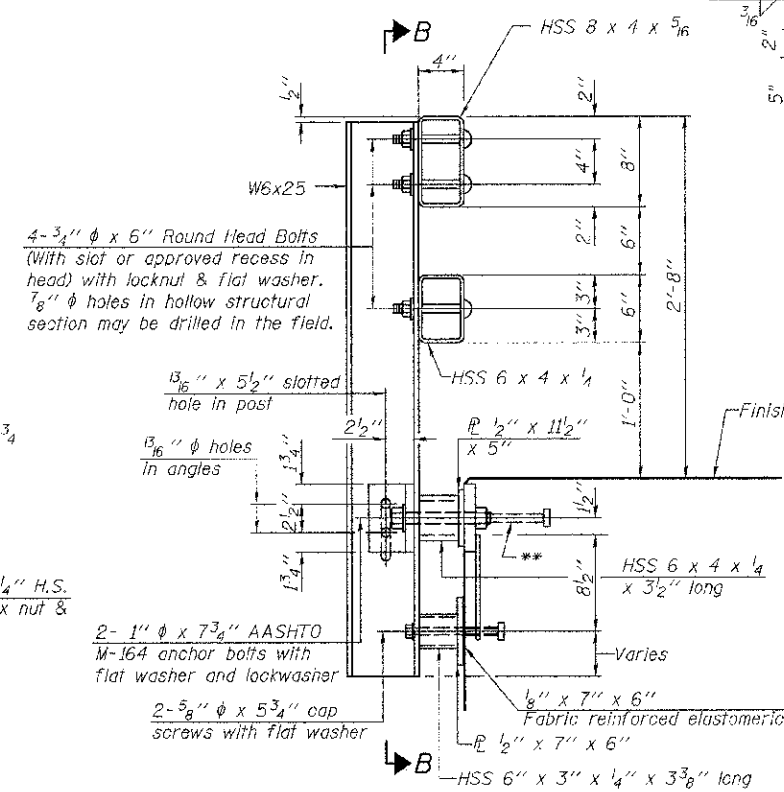
Item	Unit	Quantity
Steel Bridge Rail, Type SM (Special)	FOOT	134

STEEL BRIDGE RAIL, TYPE SM (SPECIAL)  
 COUNTY HIGHWAY 9 OVER LOUIS CREEK TRIBUTARY  
 SEC. 08-00130-02-BR  
 IROQUOIS COUNTY  
 STATION 214+96.00

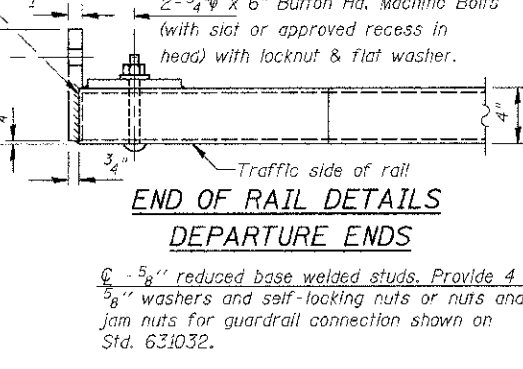
SHEET NO.	F.A.S. RTE.	SECTION	COUNTY	TOTAL SHEETS	SHEET NO.
15 SHEETS	334	08-00130-02-BR	IROQUOIS	27	14
SN 038-3014			CONTRACT NO. 87524		
FED. ROAD DIST. NO. 7 ILLINOIS			FED. AID PROJECT BRS-0334(113)		



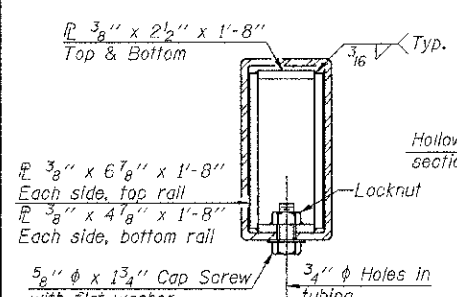
SECTION B-B



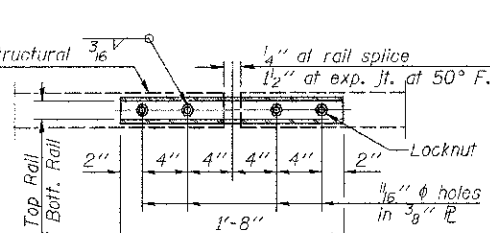
SECTION AT RAIL POST



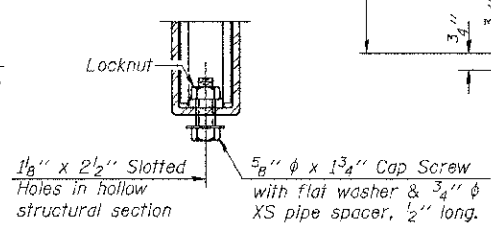
END OF RAIL DETAILS DEPARTURE ENDS



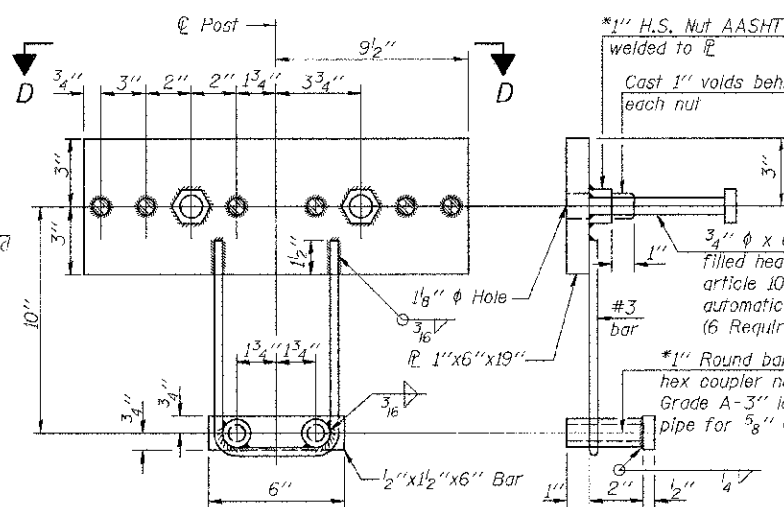
SECTION AT RAIL SPLICE



PLAN-BOTT. SPLICE TYPICAL



RAIL SPLICE CONNECTION AT EXPANSION JT.



ANCHOR DEVICE

\*Threaded areas shall be plugged or blocked off during casting of deck. Galvanized after fabrication.