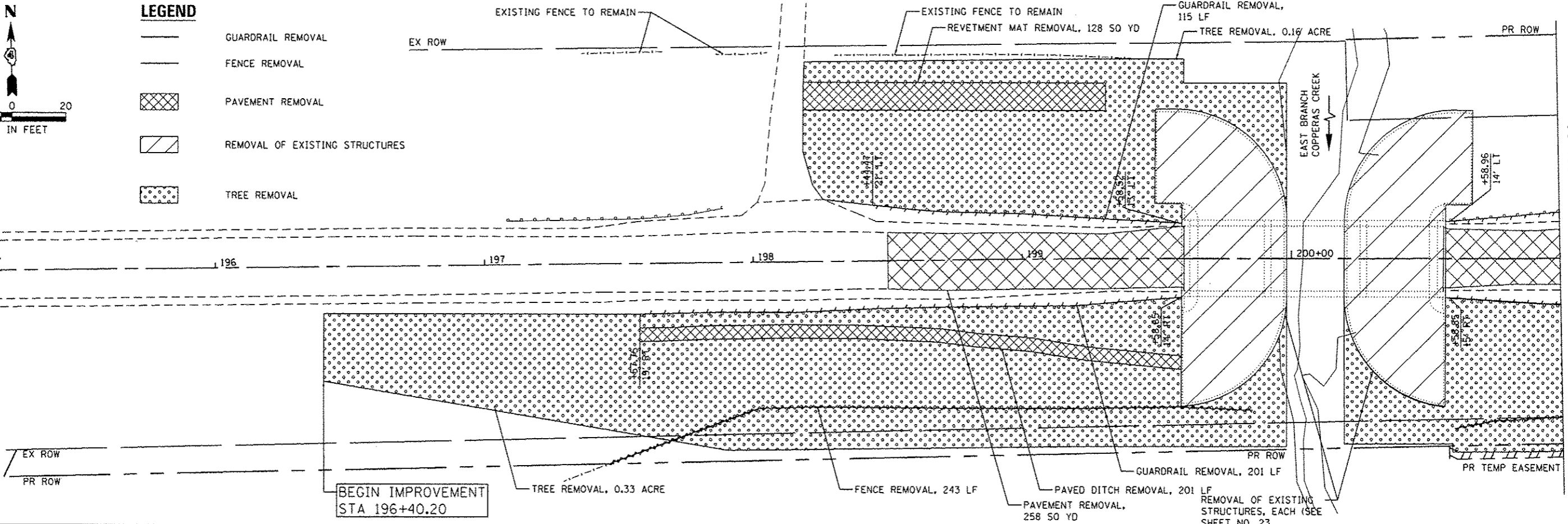


LEGEND

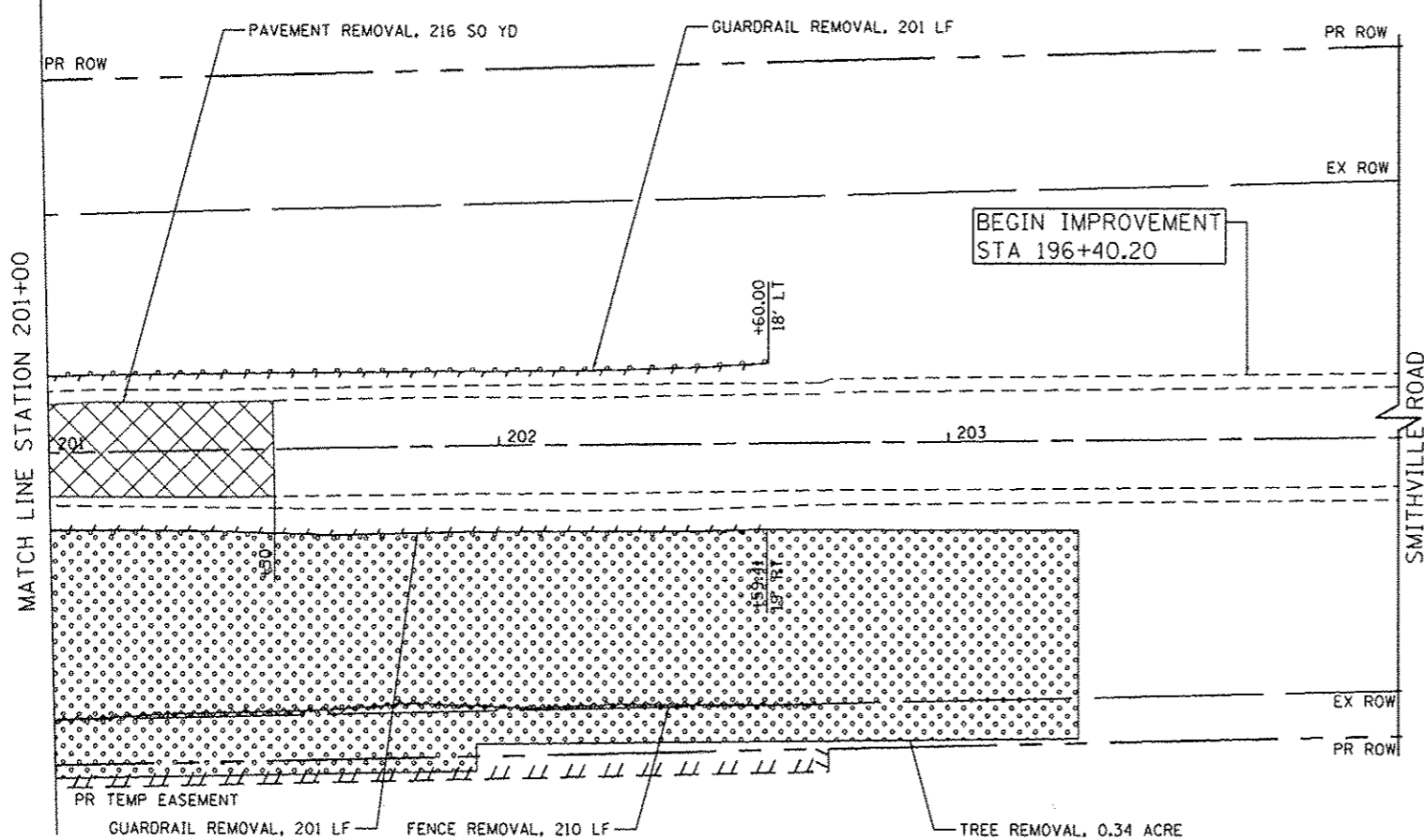
- GUARDRAIL REMOVAL
- FENCE REMOVAL
- PAVEMENT REMOVAL
- REMOVAL OF EXISTING STRUCTURES
- TREE REMOVAL

SMITHVILLE ROAD



MATCH LINE STATION 201+00

INFRASTRUCTURE ENGINEERING
 458 East Street, Suite 201, Peoria, IL 61602
 TEL: 309.673.1234 FAX: 309.673.1235
 WWW: WWW.IEENGINEERING.COM



SMITHVILLE ROAD

FILE NAME = #FILES#	DESIGNED - AJP	REVISED -
USER NAME = IEI	DRAWN - AJP	REVISED -
PLOT SCALE = 48.0000 "/>	CHECKED - BAR	REVISED -
PLOT DATE = 10/24/2012	DATE - 11/02/2012	REVISED -

**PEORIA COUNTY
HIGHWAY DEPARTMENT**

REMOVAL PLAN

SCALE: 1" = 20' SHEET NO. 1 OF 1 SHEETS STA. 195+00.00 TO STA. 204+00.00

F.A.S. RTE.	SECTION	COUNTY	TOTAL SHEETS	SHEET NO.
1381	10-00005-03-BR	PEORIA	55	13
CONTRACT NO. 89464			ILLINOIS FED. AID PROJECT	